

QY355K FULL HYDRAULIC TRUCK CRANE

QY35K 全液压汽车起重机主要特点

- ◆ QY35K汽车起重机外观和液压系统获得4项国家专利。
- ◆ 具有4节大圆弧八边形主臂，整车重心低，稳定性好。
- ◆ 单缸前支式变幅机构，主臂不俯仰。
- ◆ 主副卷扬相互独立，既可单独工作也可同时工作。
- ◆ 全头驾驶室，视野更开阔，操作更舒适。
- ◆ 回转机构具有自由滑转功能，能自动找正重物。小齿轮偏心，啮合间隙易调整。
- ◆ 新材料的使用使整车重量大幅度下降，整车性能显著提高，主要性能居行业领先。
- ◆ 先导式液压操纵系统，推动装在座椅上的两个手柄就能精确完成所有作业。（可应用户要求选配机械操纵系统）。
- ◆ 液压阀组采用集成化模块设计，压力损失小，效率高。
- ◆ 国际技术设计的平衡阀，液压回路中过滤器、防气蚀及油堵装置，使作业更可靠。
- ◆ 安全保护齐全完善，配有全自动力限制器、高度限位器、钢丝绳过放装置，使作业更安全。
- ◆ 发动机、上下车空调、液压装置可选装。

QY35K FULL HYDRAULIC TRUCK CRANE

- ◆ QY35K Truck Crane profile and hydraulic system won 6 China state patents.
- ◆ 4-section boom of all-round angle octagonal cross-section, low center of gravity, good stability.
- ◆ Single cylinder for front support elevating, main boom is no side-distortion.
- ◆ Main winch and auxiliary winch separated from each other can work not only individually but also simultaneously.
- ◆ Full-dimension driver's cab with wide vision is convenient for operation.
- ◆ Swing system with free-sliding function can automatically align to load. Pinion offset makes meshing clearance easy to adjust.
- ◆ New materials are used to minimize the total weight and maximize the whole vehicle performances. Main performances are in the leading position in the industry.
- ◆ Hydraulic pilot control system can finish all operations precisely with gently pushing the two joysticks on armrest. (Mechanical operation system is option for customer)
- ◆ Hydraulic valve block is integrated modular designed, little pressure loss and high efficiency.
- ◆ Balance valve designed with international technology, oil filter, anti-cavitation device and plug in hydraulic circuit make operation more reliable.
- ◆ Well-equipped safety devices, such as automatic moment limiter, hoist height limiter, wire rope over-release cut-out device, make operation more safe.
- ◆ Engine, air conditioners for superstructure and chassis and hydraulic device are available for option.



徐工集团徐州重型机械有限公司

地址：中国江苏徐州市铜山路105号
 Add: No. 105 Tongshan Road Xuzhou, Jiangsu China
 电话(Tel): 0516-83462242 83462350
 传真(Fax): 0516-83461869
 邮编(Post Code): 221004
 网址(URL): <http://www.xzxx.com.cn>
 E-mail: yx@xzxx.com.cn
 服务电话(Service Tel): 0516-83461183
 服务传真(Service Fax): 0516-83461180
 质量监督电话(Quality Inquiry Tel): 0516-87888268
 备件电话(Spare Parts Tel): 0516-83461542
 大修厂(Overhaul Factory): 0516-83461904



ISO9001质量管理体系认证证书 ISO14001环境管理体系认证证书 ISO45001职业健康安全管理体系认证证书



国家一等企业证书 ISO9001质量管理体系认证证书 ISO14001环境管理体系认证证书

图二-6-89Y030

徐工集团 · 重型机械

系统优化升级

QY35K

SYSTEMIC OPTIMIZATION & UPGRADE

最大起重能力
Max. Total Rated Lifting Load **35t**

主臂最大起升高度
Full-extend Boom Lifting Height **33m**

副臂最大起升高度
Full-extend Boom+Jib Lifting Height **48.7m**



The Series of Construction Crane

- 全路面起重机 汽车起重机 履带式起重机
- All-Terrain Crane Series Truck Crane Series Crawler Crane Series

徐州重型机械有限公司



主臂起重性能表 Total rated lifting load for boom (表一 Table 1)

不支第五支腿全伸支腿作业时支腿360°作业
Without the 5th outrigger boom at the side or the rear or with the 5th outrigger 360° swing

工作幅度 Working radius m	基本臂 Base boom 10.5m		中长臂 Mid-extend boom 18m		中长臂 Mid-extend boom 25.5m		全伸臂 Full-extend boom 33m	
	起重量 Lifting Load (kg)	起升高度 Lifting Height (m)	起重量 Lifting Load (kg)	起升高度 Lifting Height (m)	起重量 Lifting Load (kg)	起升高度 Lifting Height (m)	起重量 Lifting Load (kg)	起升高度 Lifting Height (m)
3.0	35000	10.58						
3.5	34000	10.34	19000	18.34				
4.0	27500	10.07	19000	18.19				
4.5	25000	9.76	19000	18.03	14000	25.82		
5.0	22500	9.40	19000	17.85	13000	25.70		
5.5	20000	9.01	18000	17.66	12000	25.56	8500	33.28
6.0	18000	8.56	17000	17.44	11200	25.42	8200	33.17
7.0	14000	7.44	15000	16.96	10000	25.10	7200	32.92
8.0	11710	5.90	12000	16.40	9200	24.73	6400	32.65
9.0	9350	3.13	10000	15.75	8600	24.31	5900	32.34
10.0			8200	15.00	8000	23.85	5600	31.99
12.0			5800	13.12	6200	22.74	5450	31.19
14.0			4250	10.48	4700	21.39	4700	30.22
16.0			3000	6.00	3600	19.72	3500	29.09
18.0					2700	17.66	2700	27.75
20.0					2100	15.01	2000	26.19
22.0					1700	11.36	1600	24.36
24.0							1230	22.17
26.0							950	19.53
28.0							600	16.17
30.0							400	11.45
吊钩重量 Weight of hook block	400kg							
吊钩最小仰角 Min.boom angle	15.6°		18.4°		25.5°		19.7°	
主臂最大仰角 Max.boom angle	69.8°		76.87°		78.4°		79.3°	



副臂起重性能表 Total rated lifting load for jib (表二 Table 2)

主臂仰角 Boom angle (°)	主臂 Boom 33m 补偿角 Offset angle					
	0°		15°		30°	
	副臂 Jib 8.5m	副臂 Jib 15m	副臂 Jib 8.5m	副臂 Jib 15m	副臂 Jib 8.5m	副臂 Jib 15m
78	4000	2100	2700	1400	2440	1100
75	3600	2000	2500	1200	2300	1000
72	3400	1890	2300	1170	2200	990
70	3200	1740	2200	1100	2100	950
65	2700	1440	2060	980	2000	880
60	1800	1220	1700	880	1500	830
55	1300	950	1200	800	1200	780
50	1000	600	850	520	750	450
40	550		510		500	

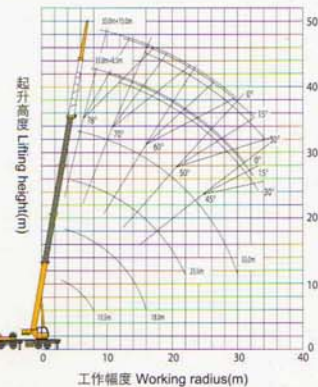
吊钩重量 With hook block 4吨用 100kg for 4t(100kg)

注: 对表一、表二起重量的说明

- ◆ 表中额定起重重量所表示的数值, 是在平整的坚固地面上本起重机能够保证的最大起重重量。
- ◆ 表中额定起重重量包括吊钩和吊具的重量。
- ◆ 表中的工作幅度是包括吊臂的变形量在内的实际值。
- ◆ 即风压为 125N/m² 允许达 7 级风时起重机仍可作业。
- ◆ 表一起升高度及表二的幅度均为参考值。

Notes about table 1 and table 2:

- ◆ The data in the table are the max. lifting capacity when the crane is set up on level and firm ground.
- ◆ The total rated lifting load in the table includes the weight of hook block and slings.
- ◆ The working radius in the table is the actual value including boom deflection under loads.
- ◆ Wind pressure 125N/m², lifting operation is also allowed under the condition of wind force scale 7.
- ◆ Lifting height in table 1 and working radius in table 2 are reference value.



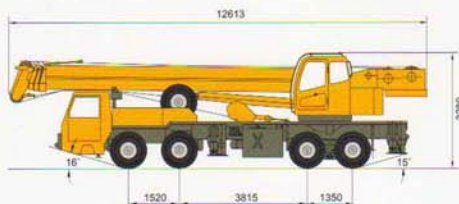
▲ 起升高度曲线 Lifting Height Area

注: 公司保留随技术改进而修改技术参数及配件的规格
All specifications are subject to technical modifications without notice



尺寸参数 Dimensions

整机全长 Overall length	12613mm
整机全宽 Overall width	2500mm
整机全高 Overall height	3280mm



▲ 整机外形尺寸 Outline dimensions



重量参数 Weight

行驶状态整机质量 Dead weight in travel state	32300kg
轴荷 Axle load	
前轴 Front axle	11150kg
后轴 Rear axle	21150kg



动力参数 Power

发动机型号 Engine model	Steyr WD615.50kW/(r/min)	SC8DK280Q3kW/(r/min)
发动机额定功率 Engine rated output	206/2200N.m/(r/min)	206/2200N.m/(r/min)
发动机额定扭矩 Engine rated torque	1300/1600	1112/1400
发动机额定转速 Max.travel speed	2200r/min	2200r/min



行驶参数 Travel

最高行驶速度 Max.travel speed	72km/h	72km/h
最小转弯直径 Min.turning diameter	24mm	24mm
最小离地间隙 Min.ground clearance	260mm	260mm
接近角 Approach angle	16°	18°
离去角 Departure angle	15°	13°
制动距离 (车速为30km/h) Braking distance(at 30km/h)	10m	10m
最大爬坡能力 Max.gradeability	30%	30%
百公里油耗 Fuel consumption of 100km	-36L	-36L



主要性能参数 Lifting performance

最大额定总起重重量 Max.total rated lifting load	35t
最小稳定幅度 Min.rated working radius	3m
转台尾部回转半径 Turning radius at swing table tail	3055mm
最大起重力矩 Max.load moment	
基本臂 Base boom	1166kN.m
最长主臂 Full-extend boom	644.8kN.m
次腿距离 Outrigger extension distance	
纵向/横向 Longitudinal/Lateral	5.35/6.0m
起升高度 Lifting height	
基本臂 Base boom	10.5m
最长主臂 Full-extend boom	33m
最长主臂+副臂 Full-extend boom+Jib	48.7m



工作速度参数 Working speed

起臂完全起臂 Boom raising time	80s
起臂完全伸时间 Boom telescoping Full-extending time	100s
最大回转速度 Max.slewing speed	2r/min
次腿伸缩时间 Outrigger telescoping time	
水平支腿同时伸/缩 Outrigger beam extending/retracting synchronously	35/30s
垂直支腿同时伸/缩 Outrigger jack extending/retracting synchronously	40/25s
起升速度 (单绳) Hoisting speed(single rope)	
主起升机构满载/空载 Main winch with full load/no load	85/110m/min
副起升机构满载/空载 Auxiliary winch with full load/no load	80/100m/min

四节八边形伸缩式吊臂
4-section octagonal telescopic boom

流线型整体式复合材料壳体的驾驶室, 操纵室
streamlined and integrated driver's cab made of complex material

