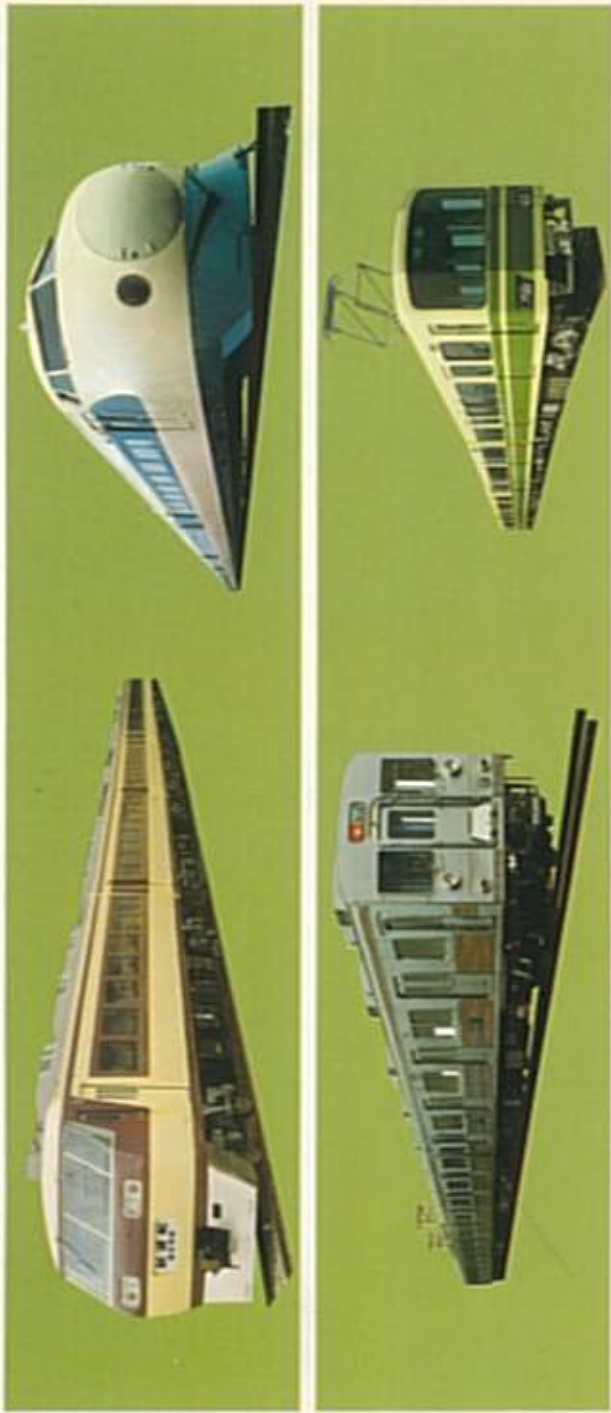


# OUR PRODUCTS

## RAILWAY CARS



## SPECIAL PURPOSE VEHICLES



## CONTAINERS



**TOKYU CAR CORPORATION**

SALES DEPARTMENT  
Yaesu Mitsui Bldg., 2-7-2 Yaesu, Chuo-ku, Tokyo 104, Japan  
Phone: (03) 272-7071  
Telex: 222-2020 TCC TOK J  
Cable Address: TOKYU CAR CORP TOK

# TOKYU HYDRAULIC RECOVERY TRUCK HW101E

Crane capacity 10 ton



**TOKYU CAR CORPORATION**

# TOKYU HYDRAULIC RECOVERY TRUCK MODEL HW101E

## STRONG AND RELIABLE

TOKYU Hydraulic Recovery Truck Model HW101E has been basically designed and developed for military use. It has undergone various severe tests to insure durability and reliability. This multi purpose truck, which can be used as a recovery truck and a crane, is built with reserved strength and performance to enable quick and easy recovery operations and crane jobs. We are sure that investment in our well appraised Tokyu Recovery Truck will bring fruitful results.

## FOR RECOVERY OPERATION OF WRECKED VEHICLES

Not only passenger cars but also heavy duty trucks can be easily recovered by the large lifting and crane capacities of this truck which has load distribution well balanced on axles. Powerful front and rear winches necessary for recovery operation at hilly sites are available as options.



## FOR CRANE OPERATIONS

This Recovery Truck will also serve for loading and unloading operations with full hydraulic crane system equipped on this truck. The three section extensible and elevatable boom, the 360° revolving turntable with heavy duty ball bearings, the outriggers and extension jacks, all of hydraulic system, show their powerfulness when truck is use for construction operations, civil engineering, heavy load transportation, vehicle repair, in-door works.

## GOOD MANEUVERING

Being mounted on a conventional truck chassis, our Recovery Truck can arrive at the site speedily and maneuver efficiently.

## SUITABLE TRUCK CHASSIS

Tokyu Recovery Truck is available in complete built up condition, but it can also made ready for supply without the truck chassis. A truck chassis of 26,000kg GVW or more and 6x4 or 6x6 driving system is suitable for mounting our superstructure.

# TOKYU HYDRAULIC RECOVERY TRUCK MODEL HW101E



## ADJUSTABLE BOOM REST

Height of the boom rest can be adjusted easily for driving with and without load.



## SPACIOUS BODY FLOOR

Body floor is spacious with side panel around. A large tool box is convenient for storing tools required for recovery operations.



## BOOM HEAD

The boom head is designed so that dragging operation can be done easily.



## OUTRIGGER AND JACK CONTROL

Width of the outriggers and height of the jacks can be easily adjusted to suit operation.

## SIMULTANEOUS BOOM OPERATION

The three section boom made in box type by high tensile steel can be extended or retracted simultaneously by operating the hydraulic cylinder and the wire rope with one lever.

## HOIST WINCH

It is of hydraulic motor drive with spur gear reduction.



## RIGID OUTRIGGERS AND JACKS

The H-type outriggers and box type jacks provide good stability of the truck.



## ARRANGEMENTS OF LEVERS AND INDICATOR

Operating lever, brake pedal, light switches and load indicator are all arranged for efficient concentration operation.

# TOKYU HYDRAULIC RECOVERY TRUCK MODEL HW101E



FRONT WINCH (option)



REAR WINCH (option)

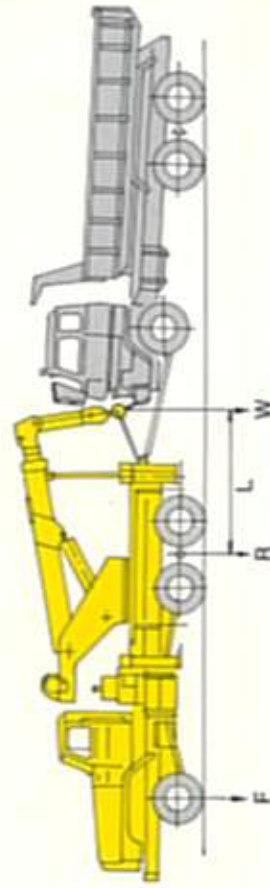
	FRONT	REAR
TYPE	Hydraulic motor drive, worm gear reduction.	Hydraulic motor drive, worm & spur gear reduction.
CAPACITY	5 Ton (single line pull).	10 Ton (single line pull) Rear operation, 5 Ton (single line pull) Side operation.
WIRE ROPE	16mm dia. x 60 meter length.	20mm dia. x 60 meter length.
OPERATION AREA	Mechanical clutch and hand brake.	Rear and both sides of truck.
PAYOUT DEVICE	Mechanical clutch and hand brake.	Mechanical clutch, fair leader, air type brake.
SAFETY DEVICE	Hydraulic relief valve.	Hydraulic relief valve and hydraulic load indicator.
OPERATION	Operating lever in chassis cabin.	Operation lever and throttle lever on rear body floor.



Anchoring spades are provided for heavy load operation.



## WRECKING PERFORMANCE (CHASSIS NV113NL)

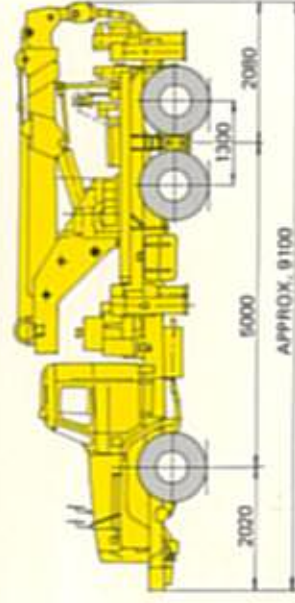
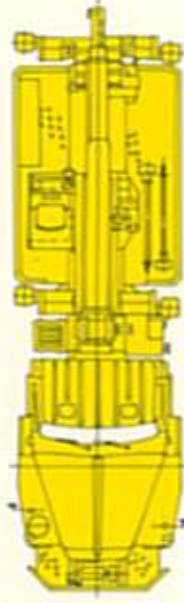


G.V.W.	AT LIFTING TOW						
	To (kg)	Fo (kg)	Ro (kg)	W (kg)	L (m)	W (kg)	L (m)
17,150	5,700	11,450	3,275	18,725	4,850	2.5	2.5

Note: ● In lifting condition wrecker's front axle load is about 15% of vehicle weight.  
● Above is an example when HW101E is mounted on a 6x4 chassis.

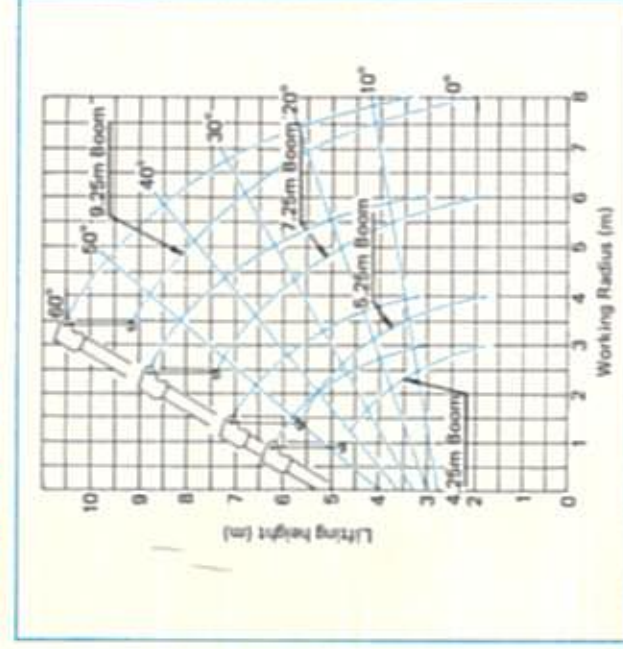
## SPECIFICATIONS

<b>MODEL</b>		TOKYU HW101E
<b>CAPACITY</b>		10ton x 3.2m, using outriggers Boom length: 5.25m
(A)		7ton x 4.5m, using outriggers. Boom length: 7.25m
(B)		
<b>BOOM</b>		
Type		Three section boom, synchronized telescoping system with hydraulic cylinder and wire ropes
Boom extension		4.25m - 9.25m
Extending speed		Approx. 0.15m/sec.
Elevation		By one hydraulic cylinder
Elevating time		0° to 60°/approx. 46sec.
<b>LIFTING HEIGHT</b>		
		Approx. 9.0m (Boom length: 9.25m)
<b>HOISTING DEVICE</b>		
Type		Hydraulic motor driven, spur gear reduction.
Hoisting speed (hook speed)		Approx. 7.0m/min.
Hook capacity		10ton (rope line: 6)
Wire rope		12.5mm dia. x 80m length
<b>SLEWING DEVICE</b>		
Type		Hydraulic motor driven, worm gear reduction 360° continuous rotation
Slewing speed		Approx. 1.1rpm
<b>OUTRIGGER DEVICE</b>		
Type		H-type outriggers. Direct operating system by hydraulic cylinders. Width and height of each outrigger separately adjustable to a desired position. Hydraulic cylinder Horizontal : 4 Vertical : 4
Extended width		Front and Rear: Max. 3,970mm
<b>HYDRAULIC DEVICES</b>		
Hydraulic pump		2 gear pumps
Hydraulic motor		Gear type: For hoisting Gear type: For slewing
Control valves		Multiple control valves with integral relief valve
We reserve the right to make changes to the specifications herein without prior notice.		



NOTE: Above is an example when HW101E is mounted on a 6 x 4 chassis.

## WORKING RANGES



## LIFTING CAPACITIES (with Outriggers)

Working Radius (m)	4.25m boom	7.25m boom	9.25m boom
1.0	10,000kg		
2.0	10,000kg		
3.0	10,000kg	8,250kg	
3.2	10,000kg	8,250kg	
4.0	8,250kg	8,250kg	5,000kg
4.5		7,000kg	5,000kg
5.0		6,500kg	5,000kg
6.0		5,000kg	5,000kg
7.0			3,800kg
8.0			3,000kg