

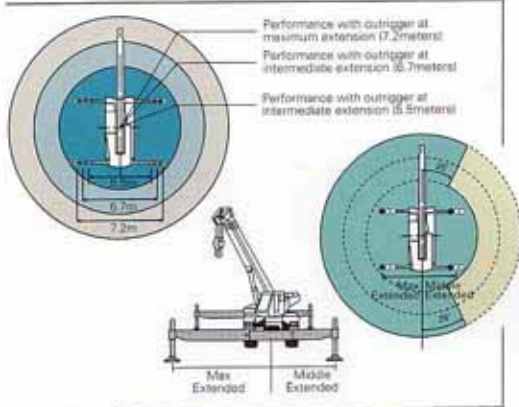


### Wide-span outriggers

Both models are outfitted with wide-span, hydraulically operated double-box construction outriggers. There are now three outrigger extension widths to choose from: 7.2m, 120cm more than previous models, with intermediate widths of 6.7m and 5.5m.

Another prominent feature is the one-side intermediate extended width. When the outrigger on one side of the crane is at maximum extension, that side will have maximum performance. If the outrigger is at intermediate extension, only the overside on the same side will have intermediate performance.

In addition, when the outriggers on the left side is at the fully extended width and the outriggers on the right side is at the intermediate extended width, there will only be less lifting capacity on the right side when compared to the fully extended width, but front, rear and left-side lifting capacity are the same as with the fully extended width.



# TR - 500EX TR - 400EX

55-ton capacity (50 metric tons)  
44-ton capacity (40 metric tons)

Hydraulic Rough Terrain Crane

*Wide-span outriggers with one-side intermediate extended width*



Outriggers can be controlled individually or simultaneously at the touch of a button from the cab.



TR-500EX	5.5 m
TR-400EX	5.5 m
TR-500EX	6.7 m
TR-400EX	6.7 m
TR-500EX	7.2 m
TR-400EX	7.2 m

Hydro  
H17.10.04  
Crane



# Supremacy in Rough Terrain Cranes

The TR-500EX and TR-400EX represent supremacy in rough terrain cranes. With rock-solid reliability, unparalleled safety features, diverse functions, and rugged good looks, these cranes set the standard in their class.

Easy operation

Unparalleled safety

Excellent cost performance

Hydro  
H17.10.04  
Crane



**Tackling the toughest terrain in style**

## Carrier dimensions



TR-500EX 13,630 m 43.2 ft  
TR-400EX 13,235 m 39.2 ft



TR-500EX 3,315 m  
TR-400EX 3,315 m

TR-500EX 3,780 m  
TR-400EX 3,740 m

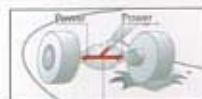
## High-power engine

Both the TR-500EX and TR-400EX have a high-power, clean-operating engine fitted with intercooler-equipped turbo charger, delivering a maximum SAE gross output of 184 kilowatts. Such power places these cranes at the top of their class. Importantly, this engine meets stringent exhaust gas restrictions set by the United States Environmental Protection Agency.

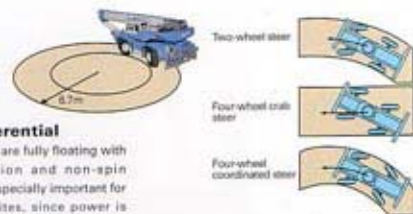


## Non-spin differential

Front and rear axles are fully floating with planetary reduction and non-spin differential. This is especially important for rough-terrain jobsites, since power is transferred from the wheel that has lost traction to the corresponding wheel on the opposite side.



Nearly the same power is supplied to both wheels.



## Three-way power steering

Tadano's unique three-way power steering is employed to maximize maneuverability. Three steering modes are available: conventional two-wheel front steering, four-wheel crab steering, and four-wheel coordinated steering. In the four-wheel coordinated steering mode, the minimum turning radius is only 6.7 meters.

## Automatic Moment Limiter assures maximum safety and comfort



### Extensive monitoring

With Tadano's Automatic Moment Limiter (AML), moment input is taken electrically at the boom elevation support point. The boom angle and boom length are also monitored. The AML also monitors and controls stepless lifting capacity and provides LCD readouts of such data as boom angle, actual working radius, actual hook load, permissible load, jib offset angle, and either boom length or potential hook height.

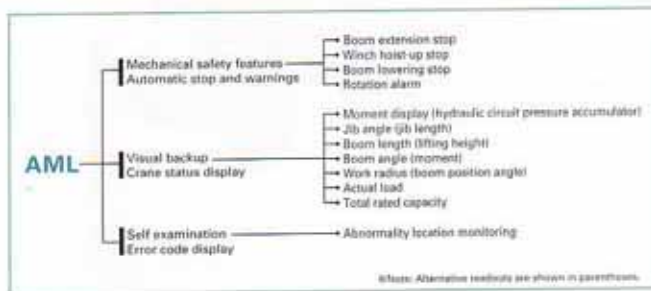
### Real-time response

The AML system shows warnings and error messages on the display to notify the operator in real time. Since malfunctioning areas are identified, trouble-shooting and maintenance time is reduced. The AML display also indicates moment as a percentage (bar graph display), audiovisual warnings of approaching overload situations; and automatic crane motion cutout, including hoist up, telescope out, and boom down at the 100% level.



External load limits  
Red: 100% of capacity  
Orange: 90% of capacity

## Outperforming the competition



Hydro  
H17.10.04  
Crane



### Full-vision cab

The cab has been designed with operator comfort and safety firmly in mind. The operator's seat can be adjusted three ways, and has a high back, with headrest and seatbelt. Covered with automotive upholstery, it remains cool to touch, even in the hottest weather. The steering wheel has tilt and telescopic adjustment and can be positioned to suit virtually any operator. Tinted safety glass is used for all cab windows to block out harsh heat and ultraviolet rays. Washer/wipers have been added to the sliding ceiling window to improve visibility. Steps are also provided to help the operator mount and dismount — especially useful when the cab has been raised by jacking up the crane body. Optional extras include cab heater with defroster and cab cooler.



### Tinted windows

Tinted safety glass windows protect the operator from the heat, ultraviolet rays, and the glare of direct sunlight.

### Cloth-covered seat

The surface of the cloth-covered seat resists becoming hot, even when exposed to direct sunlight.

## Supreme cab design - comfort and safety first

### Fully automatic transmission

The three-speed, fully automatic transmission has a switch for changing between high and low range to better meet the most demanding surfaces and steepest inclines. Simply select the "D" transmission setting to automatically engage the optimal gearing — and enjoy ultrasmooth



### Oil cooler

A special oil cooler controls oil temperature during extended periods of use, preventing loss of power caused by excessive oil temperature and enhancing overall operating efficiency.



### Responsive brake systems

Both models have separate service brake and parking brake systems. The dual-line service brakes on all four wheels are air-over hydraulic disk units, while the parking brake is a spring-operated air-released brake. A exhaust brake has been added to the braking system to enhance braking performance when descending steep grades.