

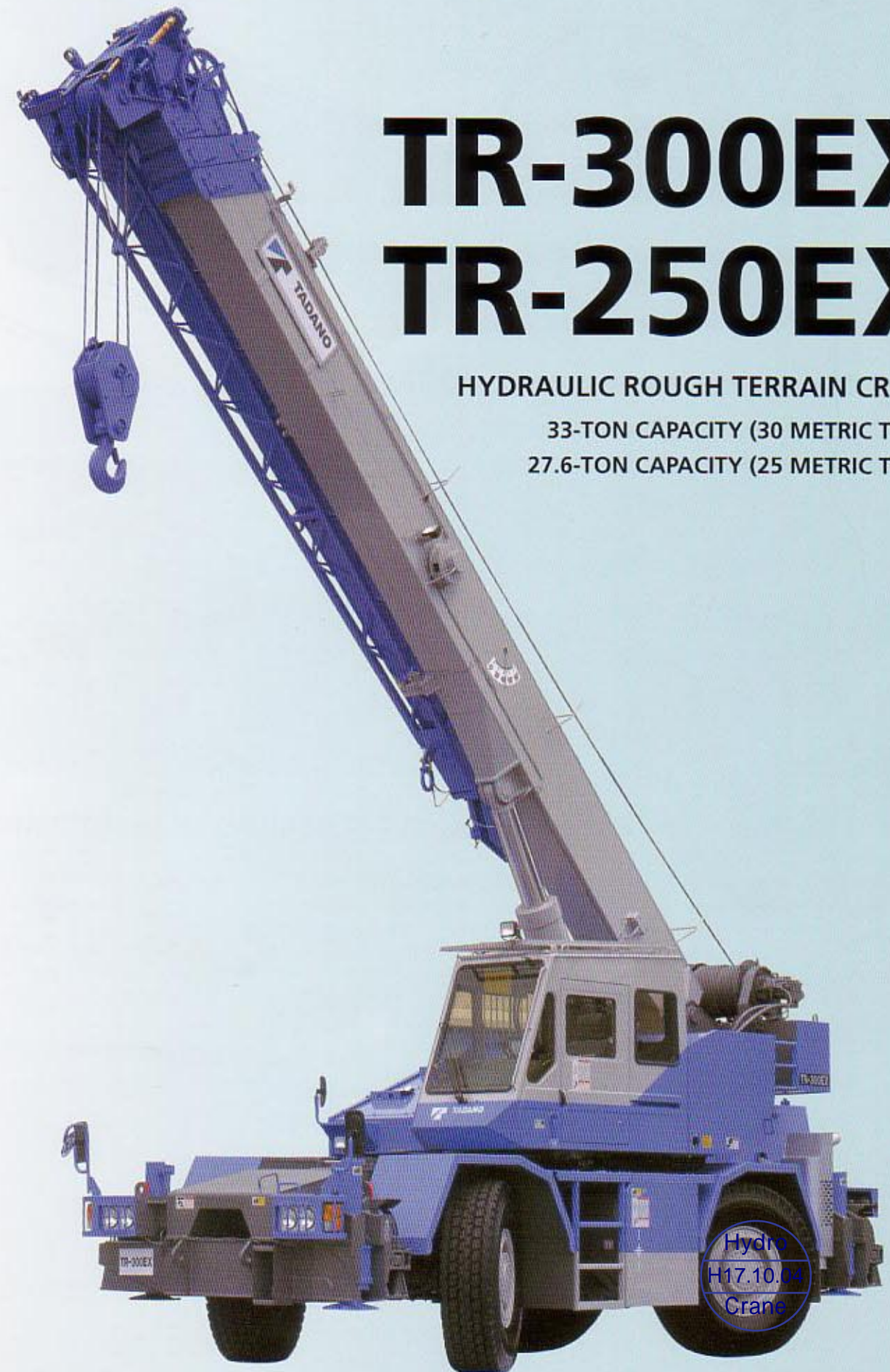


TR-300EX TR-250EX

HYDRAULIC ROUGH TERRAIN CRANE

33-TON CAPACITY (30 METRIC TONS)

27.6-TON CAPACITY (25 METRIC TONS)



TADANO FAUN GmbH

Faunberg 2, P.O. Box 100264, D-91205 Lauf a.d. Pegnitz 1, Germany
Tel: 49-(0) 9123-955-0 / Fax: 49-(0) 9123-3085

TADANO FAUN HOLLAND B.V.

Antennestraat 6, 3903 LZ Veenendaal, The Netherlands
Tel: 31-(0) 318-523977 / Fax: 31-(0) 318- 542282

TADANO LTD.

4-12, Kamezawa 2-chome, Sumida-ku, Tokyo 130-0014, Japan
Tel: (03) 3621-7752 / Fax: (03) 3621-7785
<http://www.tadano.co.jp/indexe.htm>
E-mail :tdnihq@tadano.co.jp

NEW ROUGH TERRAIN CRANE CONCEPT

Safety & Reliability

Excellent Performance

Easy Operation



Hydro
H17.10.04
Crane

TR-300EX

TR-300EX / TR-250EX

Designed for maximum speed, maneuverability and safety

Speed and maneuverability — trademarks of superior performance

Top transit speed and easy driving

TR-250EX can move at maximum travelling speed of 55km/h, and TR-300EX at 50km/h, making it easy to move between job sites. Its automatic transmission makes driving easy. When in "D" drive, the gear automatically shifts between first and third (three high and three low range) in response to travelling speed. Both models' fully automatic, heavy-duty torque converter features a special automatic lock-up device.



Three-way power steering

Both models' superior maneuverability is made possible by a three-way power steering system controlled from the cab by a single switch.

Two-wheel steering



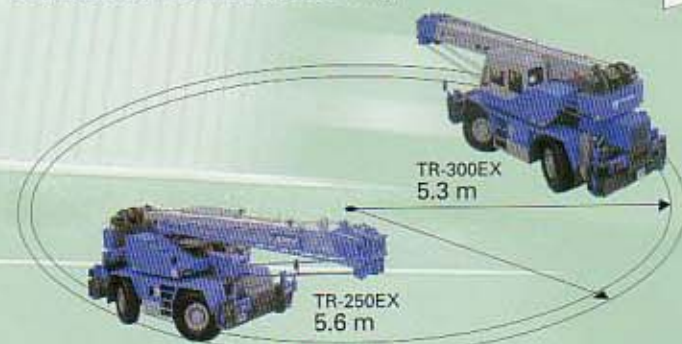
Four-wheel crab steering



Four-wheel coordinated steering



4-wheel coordinated steering



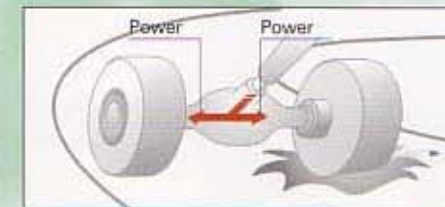
High-powered carrier

Both models are equipped with a new, high-powered 158kW(215PS) engine that is designed for high power, rapid acceleration and gradeability. The engine also conforms to EUROMOT stage I exhaust emission standards.



Non-spin differential

When travelling over rough terrain, even if one wheel starts to spin, the non-spin differential of this heavy duty crane always supplies power to the corresponding wheel on the other side for greater maneuverability.



Powerful braking performance

The vehicle's advanced braking system incorporates service brakes, powerful dual-line hydropneumatic disc units on all four wheels, and parking brakes that feature spring-operated air released brakes. The system also includes an exhaust brake for downhill move-

ment and a special circuit air dryer that prevents rusting, eliminates freezing and increases service life.

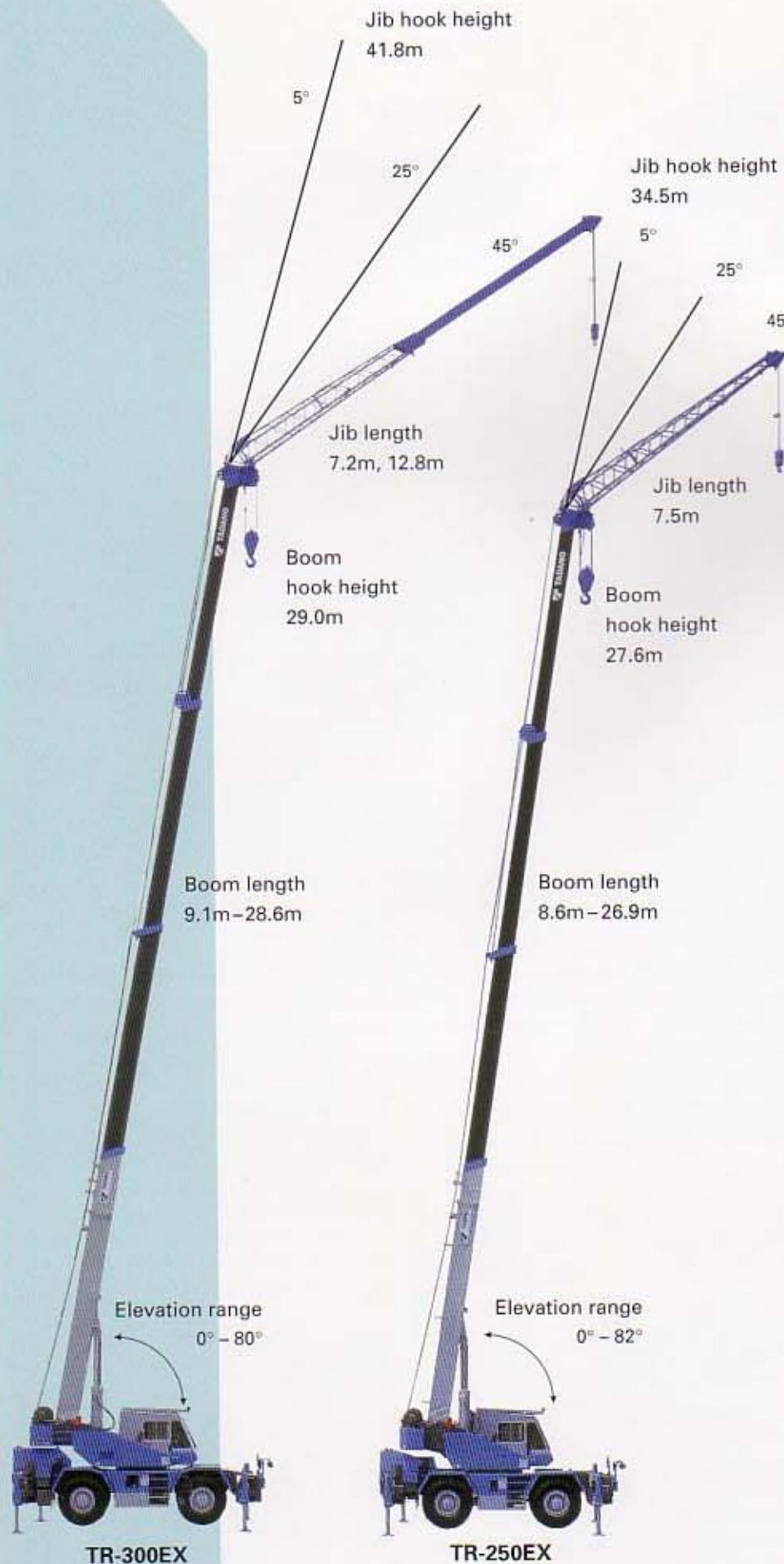


Heavy-duty tires

The vehicle is fitted with large, highly durable radial tires capable of withstanding extremely high load bearing on steering drive axles.



Superior strength and control for maximum boom reach



Full-length power boom

The boom is made of high-tensile steel and lightweight box construction for maximum rigidity. The 4-section boom features two double-action cylinders with holding valves and a wire rope mechanism for sequential and synchronized telescoping. Single-lever action ensures smooth, full-length power boom extension and retraction.

Single top (Auxiliary boom sheave)

A single top can be mounted to the boom head in order to facilitate high-speed lifting of light loads when the extra lift height provided by the jib is not required. The single top and main hoist can be used simultaneously.



Wide elevation range

The double-acting hydraulic cylinder is fitted with a counterbalance valve that has an outstanding elevation range.

Stable pick-up and carry

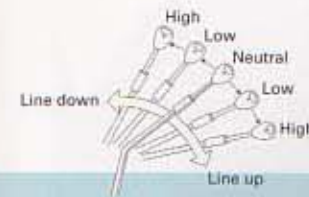
The superior design of the hydraulic automatic lock-up cylinders of both models guarantees stable lift and carry functions while the vehicle moves about the job site.



Powerful dual-winch action

Powerful 2-speed winching

Both models utilize a powerful, high-torque two-motor, two-drum winching system, and the main and auxiliary winch feature a two-speed boost circuitry that nearly doubles line speed while maintaining high line pull characteristics. The auxiliary winch is also equipped with its own separate motor, and winch drums are grooved and wider in diameter in order to increase rope service life and eliminate off-position winding.



Minimum tail swing

The crane's two in-line winches minimize the unit's tail swing.

Model	Tail swing radius
TR-300EX	3.335m
TR-250EX	3.07m



Wide-span outriggers with intermediate extended width

Wide-span outriggers

Both models are outfitted with wide-span, hydraulically operated double-box construction outriggers. There are now three outrigger extension widths to choose.

Outrigger extension width detector

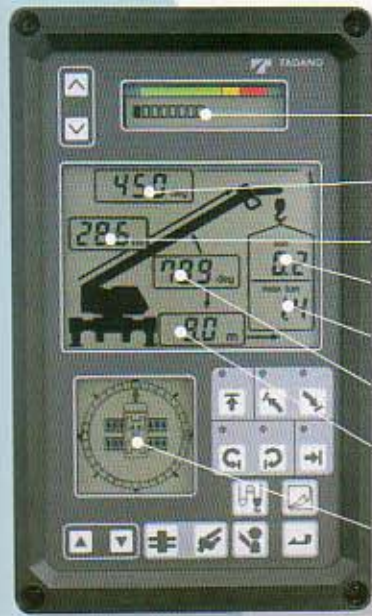
The device transmits a signal to the AML by automatically detecting the outrigger extension width. This device provides precautionary measures against possible accidents that may happen by an erroneous input by the operator.



Outriggers can be controlled individually or simultaneously at the touch of a button from the cab.



Safety and reliability



- Moment ratio → Main Oil Pressure Accumulator Pressure
- Extension jib angle → Number of part-lines of rope
- Actual boom length → Potential hook height
- Actual hook load → Unvariable
- Maximum potential load → Unvariable
- Boom angle → Moment ratio
- Actual load radius → Unvariable
- Boom position indicator (displays swing position)

Automatic Moment Limiter (AML)

Precise and safe operation is ensured by an automatic motion cutting device (AML-L), which prevents overloading. Information on eight separate functions is continuously displayed on the monitor.

The attractive AML-L panel displays all the required functions for crane operations. Display changes only while Display alteration Key (→) is pressed.



External load lamps
Red : 100% of moment
Orange : 90% of moment

Display of approximately 80 error messages

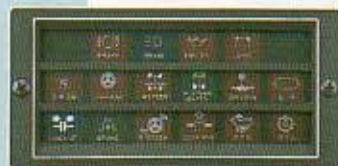
The number of error messages displayed has been increased to approximately 80 messages. If there is an error in the AML-L or and abnormality in and of the sensor switches, the buzzer sounds, and the crane automatically stops.



▲ Incorrect operating status

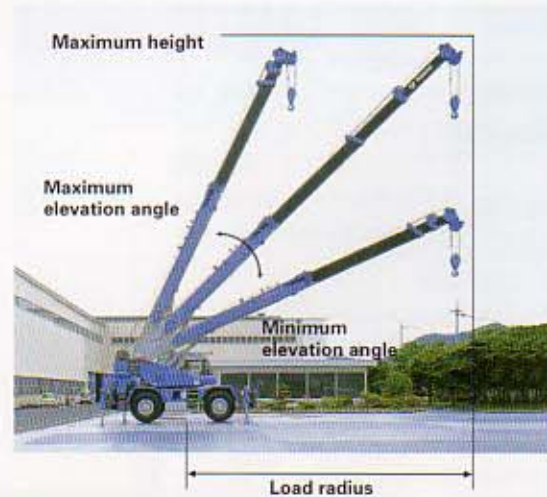
Standard equipment for safety

1. Pendant type over-winding cutout
2. Over-unwinding prevention
3. Emergency steering
4. Winch drum indicator
5. Cable follower
6. Gate switch (Deadman Switch)



Lighted control panel

The unit's sophisticated feedback system incorporates an easy-to-monitor lighted control panel that displays the operating status of various important functions such as steering configuration.



Working range limiting function

The AML allows the boom to be preset to stop automatically at desired positions during extension and elevation, increasing efficiency and enhancing safety.

The five working range limiting functions can be operated simultaneously.

1. Boom height limiting function
2. Boom elevating angle limiting function
3. Boom lowering angle limiting function
4. Load radius limiting function
5. Swing area warning

Highly functional cab design — Comfort and safety first



Full-vision cab

The cab has been designed with operator comfort and safety firmly in mind. The operator's seat can be adjusted three ways, and has a high back, with headrest and seatbelt. Covered with automotive upholstery, it remains cool to touch, even in the hottest weather. The steering wheel has tilt and telescopic adjustment and can be positioned to suit virtually any operator. Tinted safety glass is used for all cab windows to block out harsh heat and ultraviolet rays. Washer/wipers have been added to the sliding ceiling window to improve visibility. Steps are also provided to help the operator mount and demount — especially useful when the cab has been raising by jacking up the crane body. Optional extras include cab heater with defroster and cab cooler.



Convenient step



Oil cooler

A special oil cooler controls oil temperature during extended periods of use, preventing loss of power caused by excessive oil temperature and enhancing overall operating efficiency.



Wide tool box (for TR-300EX)
TR-250EX has another type.