

 TADANO

ROUGH TERRAIN CRANE

GR-700EXL

70 METRIC TON CAPACITY

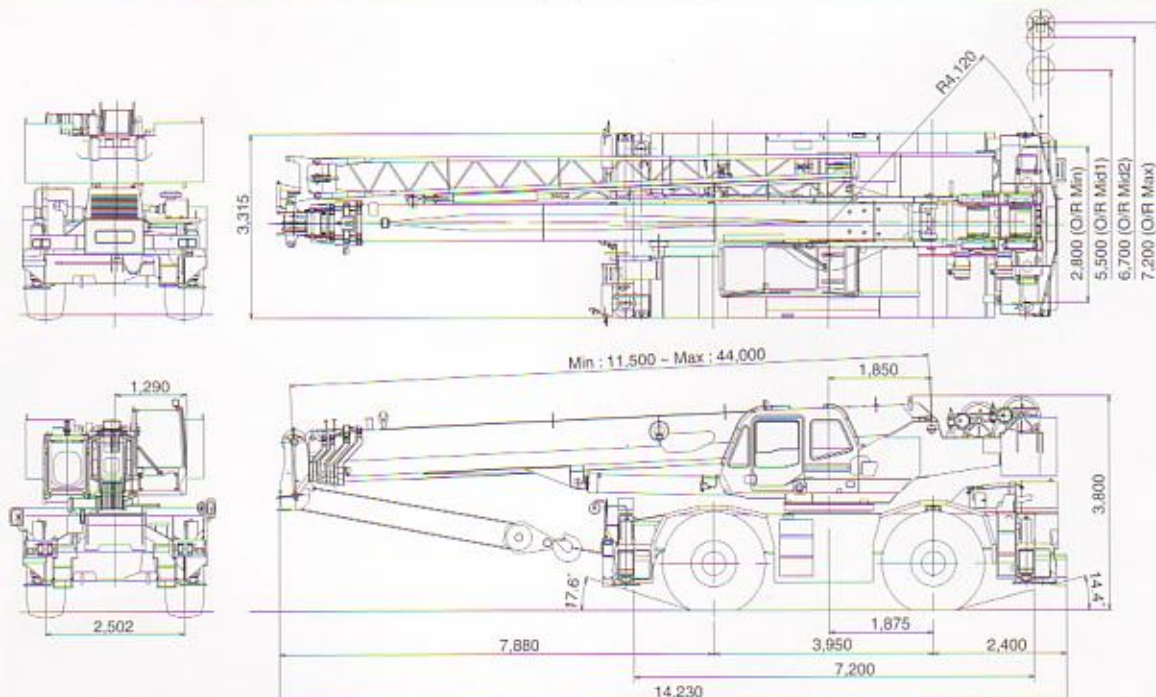


SPECIFICATIONS

MAXIMUM CAPACITY	70,000 kg at 3.0 m
TRAVELING SPEED(MAX.)	40 km/h
GRADEABILITY (TAN θ)	57 % (at stall)
WEIGHT Gross vehicle mass	48,100 kg (48,200 kg)
-front axle	24,700 kg (24,700 kg)
-rear axle	23,400 kg (23,500 kg) *(EURO SPEC)
MIN. TURNING RADIUS	11.9 m (2-wheel steering) 6.7 m(4-wheel steering) (at center of extreme outer tire)
BOOM	5-section full power partially synchronized telescoping boom of round hexagonal box construction. Fully retracted length 11.5 m Fully extended length 44.0 m Extension speed 32.5 m in 145 s Elevation speed -2° to 80° in 77 s
JIB	2-staged swingaround boom extension. Triple offset(3.5°/25°/45°) type. Stores alongside base boom section. Single sheave at jib head. Assistant cylinders for mounting and stowing. 9.9 m and 17.7 m
MAIN WINCH	Variable speed type with grooved drum driven by hydraulic axial piston motor through winch speed reducer. Single line pull 54.9 kN (5,600 kgf) Single line speed 143 m/min. (at the 4th layer) Wire rope 19 mm (Diameter)
AUXILIARY WINCH	Variable speed type with grooved drum driven by hydraulic axial piston motor through winch speed reducer. Single line pull 54.9 kN (5,600 kgf) Single line speed 125 m/min. (at the 2nd layer) Wire rope 19 mm (Diameter)
SWING speed	2.3 min ⁻¹ (rpm)
Tail swing radius	4,120 mm
HYDRAULIC SYSTEM	Pumps... 2 variable piston pumps for telescoping, elevating and winches. Tandem gear pump for steering, swing and optional equipment. Control valves.... Multiple valves actuated by pilot pressure with integral pressure relief valves. Circuit.... Equipped with air cooled type oil cooler. Oil pressure appears on AML display for main circuit. Hydraulic oil tank capacity.... approx. 740 liters Filters... Return line filter

TADANO Automatic Moment Limiter (Model: AML-L)	Main unit in crane cab gives audible and visual warning of approach to overload. Automatically cuts out crane motions before overload. The AML monitors each outrigger extended length and automatically programs the corresponding "RATED LIFTING CAPACITY" table. With working range (load radius and/or boom angle and/or tip height and/or swing range) limit function. Automatic Speed Reduction and Soft Stop Function on boom elevation and/or boom telescoping and/or swing. Nine functions are constantly displayed. Digital liquid crystal display: • Either boom angle or moment % • Either boom length or potential hook height • Either actual load or swing angle • Actual hook load • Permissible load • Either jib offset angle or number of parts line of rope • Boom position indicator • Either outrigger position or on-tire indicator Bar graphical display: • Either moment as percentage or main hydraulic pressure
OUTRIGGERS	4-hydraulically operated H-type outriggers. Each outrigger controlled simultaneously or independently from the crane cab. Equipped with sight level gauge. Floats mounted integrally with the jacks retract to within vehicle width. All cylinders fitted with pilot check valves. Equipped with extension width detector for each outrigger. Fully ... 7,200 mm, Middle ... 6,700 mm & 5,500 mm Minimum ... 2,800 mm, Float size (Diameter) ... 500 mm
Extended width	
CARRIER	Rear engine, left-hand steering, driving axle 2-way selected type (by manual switch). 4 x 2 front drive, 4 x 4 front and rear drive
ENGINE	Model..... MITSUBISHI 6D16-TLU2A [EUROMOT Stage 2] Type 4 cycle, 6 cylinder in line, direct injection, water cooled, turbo charged with intercooler, diesel engine. Piston displacement...7,545 cm ³ Bore x stroke...118 mm x 115 mm Max.output...166 kW[225PS] at 2,700 min ⁻¹ (rpm) Max.torque ...705 N-m [72 kgf-m] at 1,300 min ⁻¹ (rpm)
TRANSMISSION	Electronically controlled full automatic transmission.
STEERING	Hydraulic power steering controlled by steering wheel. 4 steering modes available: 2-wheel front, 2-wheel rear 4-wheel coordinated, 4-wheel crab
SUSPENSION	Front..... Rigid mounted to the frame. Rear..... Pivot mounted with hydraulic lockout cylinders.
TIRES	29.5 - 25 - 22PR(OR), Single x 4
FUEL TANK CAPACITY	300 liters

DIMENSION



*Some specifications are subject to change

Continuing technical development requires Tadano to retain the right to make specifications, equipment and price changes without notice.



TADANO LTD. (International Headquarters)
4-12, Kamezawa 2-chome, Sumida-ku Tokyo 130-0014, Japan
Tel: 81-3-3621-7752 Fax: 81-3-3621-7785
http://www.tadano.co.jp/indexe.htm E-mail: tdnihq@tadano.co.jp



GR-700EXL-2004-2-5000-1
Printed in Japan