



ROUGH TERRAIN CRANE

GR-120NL

12 METRIC TON CAPACITY

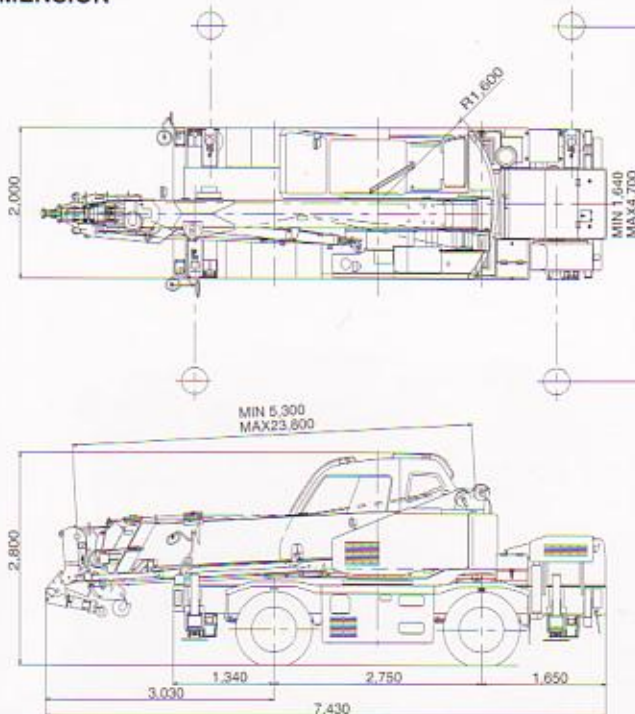
***New Partner
for New Century!***



SPECIFICATIONS

MAXIMUM CAPACITY	12,000kg at 2.0m
TRAVELLING SPEED(MAX.)	49 km/h
GRADEABILITY (TAN θ)	46%
WEIGHT Gross vehicle mass	13,365kg
-front	6,900kg
-rear	6,465kg
MIN.TURNING RADIUS	6.5m (2-wheel steerin) 3.8 m(4-wheel steering) (at center of extreme outer tire)
BOOM	6-section full length power telescoping boom of box construction
Fully retracted length	5.3m
Fully extended length	23.8m
Extension speed	18.5m in 52s
Elevation speed	-3° to 82° in 29s
JIB	2-staged extension type. Triple offset (5°/25°/45°) type. Single Sheave at jib head. Stored under base boom section. 3.6m and 5.5m
Length	
MAIN WINCH	Grooved drum driven by hydraulic axial piston motor through winch speed reducer. 14.7 kN (1,500kgf) 124 m/min. (at the 5th layer) Spin-resistant type 11.2mm X 132m
Single line pull	
Single line speed	
Wire rope	
AUXILIARY WINCH	Grooved drum driven by hydraulic axial piston motor through winch speed reducer. 17.7 kN(1,800 kgf) 105 m/min.(at the 3rd layer) Spin-resistant type 11.2mm X 65m
Single line pul	
Single line speed	
Wire rope	
SWING speed	2.4 min (rpm)
Tail swing radius	1,600mm
HYDRAULIC SYSTEM	Pumps...Two variable piston pumps for telescoping, elevating and winches. Tandem gear pump for swing,steering and accumulator. Control valves... Multiple valves actuated by pilot pressure with integral pressure relief valves. Circuit... Equipped with air cooled type oil cooler. Oil pressure appears on AML display for main circuit and accumulator. Hydraulic oil tank capacity... approx.172 liters Filters... Return line filter

DIMENSION



TADANO Automatic Moment Limiter	Main unit in crane cab gives audible and visual warning of approach to overload. Automatically cuts out crane motions (including swing motion) before overload. With working range (load radius and/or boom angle and/or tip height and/or swing range) limit function. Eight functions are constantly displayed. Digital liquid crystal display: •Either boom angle or moment % •Either boom length or potential hook height •Either actual working radius or swing angle •Actual hook load •Permissible load •Either jib offset angle •Boom position indicator •Either outriggers position or on-tire indicator Bar graphical display: •Either moment as percentage or main hydraulic pressure and accumulator pressure (Display changes by alternation key)
OUTRIGGERS	Hydraulically operated H-type outriggers. Each outrigger controlled simultaneously or independently from the cab. Equipped with sight level gauge. Floats mounted integrally with the jacks retract to within vehicle width. All jack cylinders fitted with pilot check valves. Equipped with extension width detector for each outrigger.
Extended width	Fully ... 4,700mm Middle ... 4,300mm 3,500mm 2,500mm Minimum ... 1,640 mm Float size (Diameter) ... 350mm
CARRIER	Rear engine, right-hand steering, driving axle 2-way selected type (by manual switch). 4 X 2 front drive 4 X 4 front and rear drive.
ENGINE	Model.....MITSUBISHI 4M50-TLE2A Type4cycle,turbo charged and after cooled, 4cylinder in line,direct injection,water cooled diesel engine. Piston displacement...4,899 cm ³ Bore X stroke...114mm X 120mm Max.output...125kW(170PS) / 2,800min ⁻¹ (rpm) Max.torque ...451Nm (46.0kgfm) at 1,800min ⁻¹ (rpm)
TRANSMISSION	Full automatic transmission with torque converter.
STEERING	Hydraulic power steering controlled by steering wheel. 4 steering modes available: 2-wheel front 2-wheel rear 4-wheel coordinated 4-wheel crab
SUSPENTION	Front.....Semi-ellipic leaf springs with hydraulic lockout device. Rear.....Semi-ellipic leaf springs with hydraulic lockout device.
TIRES	Front.....275 / 80 R22.5 149/146J, Single X 2 Rear.....275 / 80 R22.5 149/146J, Single X 2

*Some specifications are subject to change

Continuing technical development requires Tadano to retain the right to make specifications, equipment and price changes without notice.



TADANO LTD. (International Headquarters)
4-12, Kamezawa 2-chome, Sumida-ku Tokyo 130-0014, Japan
Tel:81-3-3621-7752 Fax:81-3-3621-7785
http://www.tadano.co.jp/indexe.htm E-mail:tdnihq@tadano.co.jp

GR-120N-2001-10-2000-1
Printed in Japan