



HYDRAULIC TRUCK LOADER CRANES

# CARGO CRANE

## ZR560 series

3,230 kg capacity

Introducing  
The Ultra-Reach Boom  
for Extended Life Range



ZR566 / ZR566S / ZR565S / ZR564S



### Swing auto-lock system

The system provides safe driving with the boom fixed in place, since it locks automatically a boom swing function when the crane is not operated.



### New type of the outrigger

The employment of a new parabox-type outrigger enables the outrigger to secure a maximum extension width of 4.8 meters which enhances crane performance substantially in a stability zone. A hydraulic extension system of the outrigger is now available which is applicable to the model ZR566, ZR566S & ZR565S.



# The ZR560 series

## Seeking always a new domain of activities with enhanced safety

### "TADANO NEW ZR560 SERIES"

ZR566, a typical model of the ZR560 series, has an enhanced lifting capacity of 3,230kg, equipped with a hydraulic ultra-reach boom of 18.06 meters of stronger quality.

#### Stronger long boom

The use of upgraded high-tensile steel ( $690\text{N/mm}^2$ ) enables the boom strength to be enhanced by 15% compared with the conventional one. To reduce a shock when telescoping the boom, a valve is newly fitted with inside the telescoping circuit.

#### Overwinding prevention device

This safety device stops automatically winch hoisting up, boom extension and boom elevation, whenever the hook block approaches the boom head. An automatic hook block stowing device is also available as a line option (except ZR566).

#### Excellent function at the boom head (except ZR566)

A wider space secured between sheaves at the boom head prevents the wire rope from being twisted, and this helps prolong the life of the wire rope.



#### Centralized control panels

A horn switch and displayed in panels together with an empty chassis rated lifting capacities chart - one on each side of the



# ZR560 series

## RATED LIFTING CAPACITIES

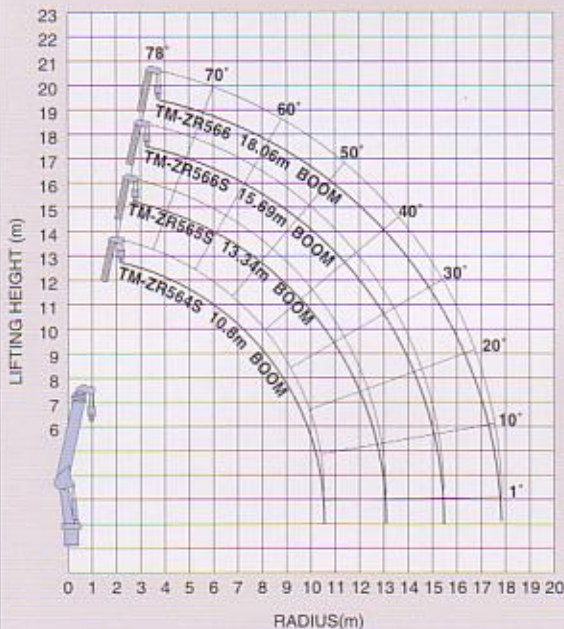
TM-ZR564S / ZR564S(H)										
3.55m/5.99m/8.39m boom										
Load Radius (m)	3.7m <sup>2)</sup>	4.5	5.0	5.5	6.0	6.5	7.0	7.5	8.17	
Rated Lifting Capacity (kg)	3,230	2,580	2,280	2,030	1,830	1,680	1,550	1,430	1,280	
10.8m boom										
Load Radius (m)	4.5m <sup>2)</sup>	5.0	6.0	7.0	8.0	9.0	10.0	10.58		
Rated Lifting Capacity (kg)	2,030	1,830	1,480	1,230	1,080	980	880	830		

TM-ZR565S / ZR565S(H)										
3.77m/6.21m/8.59m boom										
Load Radius (m)	3.6m <sup>2)</sup>	4.5	5.0	5.5	6.0	6.5	7.0	7.5	8.37	
Rated Lifting Capacity (kg)	3,230	2,430	2,130	1,880	1,650	1,480	1,350	1,230	1,080	
10.97m boom										
Load Radius (m)	4.5m <sup>2)</sup>	5.0	6.0	7.0	8.0	9.0	10.0	10.75		
Rated Lifting Capacity (kg)	2,030	1,830	1,480	1,230	1,030	880	780	730		
13.34m boom										
Load Radius (m)	5.0m <sup>2)</sup>	6.0	7.0	8.0	9.0	10.0	11.0	12.0	13.12	
Rated Lifting Capacity (kg)	1,330	1,100	950	830	730	650	600	550	500	

**NOTES :**  
 1. Rated Lifting Capacities are based on crane strength only. Capacities based on stability may be lower than those in above table depending on loading conditions and types of chassis.  
 2. Load radii in above table mean actual ones including effects of loaded boom deflection.  
 3. Capacities in above table include mass of hook block (32kg=ZR566 30kg=ZR565S, ZR565S ZR564S), sling, etc.

## WORKING RANGE

TM-ZR564S / 564S(H) / 565S / 565S(H) / 566S / 566S(H) / 566



**NOTE :**  
 The above lifting heights and boom angles are based on a straight (unladen) boom, and allowance should be made for boom deflection obtained under laden conditions.



ZR560-2000-10-1000-1  
 Printed in Japan

(H)...with hook stowing device[option]

TM-ZR566S / ZR566S(H)											
3.85m/6.29m/8.67m boom											
Load Radius (m)	3.6m <sup>2)</sup>	4.5	5.0	5.5	6.0	6.5	7.0	7.5	8.45		
Rated Lifting Capacity (kg)	3,230	2,430	2,130	1,880	1,650	1,480	1,350	1,230	1,030		
11.01m boom											
Load Radius (m)	4.5m <sup>2)</sup>	5.0	6.0	7.0	8.0	9.0	10.0	10.79			
Rated Lifting Capacity (kg)	2,030	1,830	1,480	1,230	1,030	880	780	730			
13.35m boom											
Load Radius (m)	5.0m <sup>2)</sup>	6.0	7.0	8.0	9.0	10.0	11.0	12.0	13.13		
Rated Lifting Capacity (kg)	1,330	1,100	950	830	730	650	600	550	500		
15.69m boom											
Load Radius (m)	6.0m <sup>2)</sup>	7.0	8.0	9.0	10.0	11.0	12.0	13.0	14.0	15.47	
Rated Lifting Capacity (kg)	530	430	380	380	330	330	280	280	250	230	

TM-ZR566											
4.69m/7.41m/10.11m boom											
Load Radius (m)	3.4m <sup>2)</sup>	4.0	5.0	6.0	7.0	8.0	9.0	9.99			
Rated Lifting Capacity (kg)	3,230	2,680	2,030	1,630	1,330	1,100	900	780			
12.76m boom											
Load Radius (m)	4.5m <sup>2)</sup>	5.0	6.0	7.0	8.0	9.0	10.0	11.0	12.0	12.5	
Rated Lifting Capacity (kg)	2,030	1,830	1,480	1,200	980	830	700	600	530	500	
15.41m boom											
Load Radius (m)	5.0m <sup>2)</sup>	6.0	7.0	8.0	9.0	10.0	11.0	12.0	13.0	14.0	15.1
Rated Lifting Capacity (kg)	1,030	930	800	700	630	550	480	430	380	330	300
18.06m boom											
Load Radius (m)	6.0m <sup>2)</sup>	7.0	8.0	9.0	10.0	11.0	12.0	13.0	14.0	15.1	17.8
Rated Lifting Capacity (kg)	530	430	380	380	330	330	280	230	180	180	

## TECHNICAL SPECIFICATIONS

MODEL	TM-ZR564S TM-ZR564S(H)	TM-ZR565S TM-ZR565S(H)	TM-ZR566S TM-ZR566S(H)	TM-ZR566
<b>CRANE CAPACITY</b>	3,230kg at 3.7m (4-part lines)	3,230kg at 3.6m (4-part lines)	3,230kg at 3.4m (4-part lines)	3,230kg at 3.4m (4-part lines)
<b>BOOM</b>	Fully powered partly synchronized telescoping boom of pentagonal box construction.			
Type				
Sections	4	5	6	6
Length	3.55m-10.8m	3.77m-13.34m	3.85m-15.69m	4.69m-18.06m
Extending Speed	7.25m / 21s	9.57m / 25s	11.84m / 28s	13.36m / 31s
Elevation Range/Speed	1° to 78° / 12s			
Max. Hook Height*	Approx. 12.7m	Approx. 15.2m	Approx. 17.5m	Approx. 19.57m
Max. Load Radius*	10.58m	13.12m	15.47m	17.8m
<b>WINCH</b>	Hydraulic motor driven. Spur gear speed reduction, provided with mechanical brake. Mechanically stowed beneath boom top portion...(H) only			
Max. Single Line Pull	7.94kN (810kgf)			
Max. Single Line Speed	76 m / min (at 4th layer)			
Wire rope (Diameter x length)	8mmX68m	8mmX80m	8mmX92m	8mmX103m
<b>SWING</b>	Hydraulic motor driven. Worm gear speed reduction. Continuous 360° full circle swing on ball bearing slew ring. Automatic swing lock.			
Speed	2.5 min <sup>-1</sup> (rpm)			
<b>OUTRIGGERS</b>	Manually extended sliders and hydraulically extended jacks ...Standard outrigger Hydraulically extended sliders and hydraulically extended jacks...power slide outrigger(option) Integral with crane frame. Power up and down.			
Extended Width	Max.: 4.8m Mid.: 4.3m 3.3m Min.: 2.2m			
<b>HYDRAULIC SYSTEM</b>	Single gear pump			
Pump				
Control Valves	Multiple control valves with integral safety valve			
<b>STANDARD SAFETY EQUIPMENT</b>	<ul style="list-style-type: none"> <li>● Load meter ● Load indicator</li> <li>● Hoisting limiter ● P.T.O. indicator lamp</li> <li>● Hook safety latch ● Level gauge</li> <li>● Hydraulic safety valves, check valves and holding valves</li> </ul>			
<b>SUITABLE TRUCKS</b>	Gross vehicle mass 12,000 to 25,000kg			

**NOTES :**  
 1. Operating speeds of the crane are guaranteed under the condition that the pump delivery is 60L/min.  
 2. \*No allowance made for boom deflection under laden conditions.



**TADANO LTD.**

(International Headquarters)  
 4-12, Kamezawa 2-chome, Sumida-ku  
 Tokyo 130-0014, Japan  
 Tel: 81-3-3621-7752 Fax: 81-3-3621-7785

http://www.tadano.co.jp/indexe.htm  
 E-mail: tdnihq@tadano.co.jp