



TADANO

HYDRAULIC TRUCK LOADER CRANES

CARGO CRANE

ZR500 series

ZR506/505/504/503



photo: "Hook In" system type



Dominate Your Profession with the ZR500 Series!

Professional-level specifications: 12 ton-m
(3.23-ton lifting capacity x 3.6-meter work radius)

The ZR500 series, with a lifting capacity of 3.23 tons and a working radius of 3.6 meters, exceeds the 12 t-m performance rating at the top of its class. Tadano ZR500 cranes excel in safety, strength and power. They are built to the specifications that you require; the more you use one, the clearer you will see just how good it is.

Automatic swing lock

Locks the boom in place when the truck is being driven for greater safety.



Smooth boom extension and retraction

Special valves enable smooth boom extension and retraction for smoother operation.

Neat, streamlined boom ends

The cables and sheaves are all internal - for a clean, clutter-free appearance.
* Except 6-section boom crane.



Centralized control panels

All the important function switches and rated lifting capacity chart are grouped together in panels - one on each side of the crane.

Outriggers for absolute stability and safety

Handling so easy that the extension and retraction can be performed with one hand. Its unique double safety measures provide protection against accidental extension of the outrigger beam during travel and retraction during loading.



3.8m

High-capacity hydraulic oil tank gives hard-working stamina.

ZR500 cranes just keep on lifting. With a capacity exceeding 58.6L, the high-capacity tank is large enough to prevent sudden rises in hydraulic fluid when the crane is working its hardest.

ADVANCED EQUIPMENT

The ZR500 series feature the "Hook-In" system to further enhance work efficiency.

Sure proof of Tadano's leading position in the cargo handling industry can be seen in the development of its innovative "Hook-In" system. A pull of a lever and the crane hook is stowed automatically. No more manual belaying.



ZR500 series

RATED LIFTING CAPACITIES

TM-ZR503

3.47m / 5.91m / 8.31m boom									
Load Radius (m)	3.7 ^{min}	4.5	5.0	5.5	6.0	6.5	7.0	7.5	8.09
Rated Lifting Capacity (kg)	3,230	2,580	2,280	2,030	1,830	1,680	1,550	1,430	1,280

TM-ZR504

3.55m / 5.99m / 8.39m boom									
Load Radius (m)	3.7 ^{min}	4.5	5.0	5.5	6.0	6.5	7.0	7.5	8.17
Rated Lifting Capacity (kg)	3,230	2,580	2,280	2,030	1,830	1,680	1,550	1,430	1,280
10.8m boom									
Load Radius (m)	4.5 ^{min}	5.0	6.0	7.0	8.0	9.0	10.0	10.58	
Rated Lifting Capacity (kg)	2,030	1,830	1,480	1,230	1,080	980	880	830	

TM-ZR505

3.77m / 6.21m / 8.59m boom									
Load Radius (m)	3.6 ^{min}	4.5	5.0	5.5	6.0	6.5	7.0	7.5	8.37
Rated Lifting Capacity (kg)	3,230	2,430	2,130	1,880	1,650	1,480	1,350	1,230	1,080
10.97m boom									
Load Radius (m)	4.5 ^{min}	5.0	6.0	7.0	8.0	9.0	10.0	10.75	
Rated Lifting Capacity (kg)	2,030	1,830	1,480	1,230	1,030	880	780	730	
13.34m boom									
Load Radius (m)	5.0 ^{min}	6.0	7.0	8.0	9.0	10.0	11.0	12.0	13.12
Rated Lifting Capacity (kg)	1,330	1,100	950	830	730	650	600	550	500

TM-ZR506

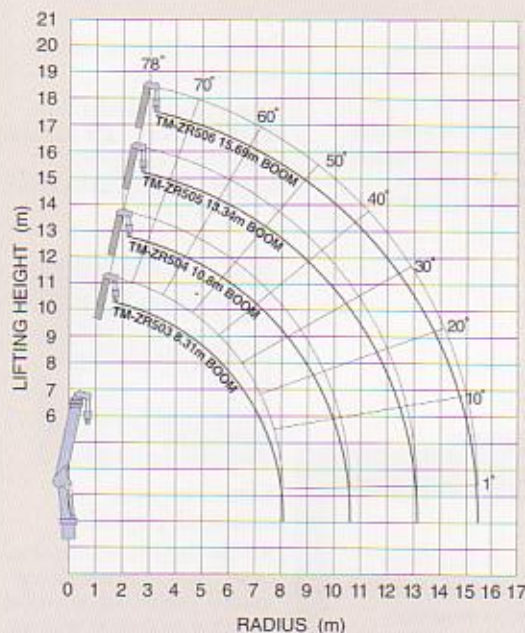
3.85m / 6.29m / 8.67m boom										
Load Radius (m)	3.6 ^{min}	4.5	5.0	5.5	6.0	6.5	7.0	7.5	8.45	
Rated Lifting Capacity (kg)	3,230	2,430	2,130	1,880	1,650	1,480	1,350	1,230	1,030	
11.01m boom										
Load Radius (m)	4.5 ^{min}	5.0	6.0	7.0	8.0	9.0	10.0	10.79		
Rated Lifting Capacity (kg)	2,030	1,830	1,480	1,230	1,030	880	780	730		
13.35m boom										
Load Radius (m)	5.0 ^{min}	6.0	7.0	8.0	9.0	10.0	11.0	12.0	13.13	
Rated Lifting Capacity (kg)	1,330	1,100	950	830	730	650	600	550	500	
15.69m boom										
Load Radius (m)	6.0 ^{min}	7.0	8.0	9.0	10.0	11.0	12.0	13.0	14.0	15.47
Rated Lifting Capacity (kg)	530	430	380	380	330	330	280	280	250	230

NOTE :

- The mass of hook (30kg), slings and all similarly used load handling devices must be added to the mass of the load.
- The above numerical values of rated lifting capacities are based on crane strength only. The rated lifting capacities based on stability may lower than those in the above table depending on the loading conditions and the types of the chassis.

WORKING RANGE

TM-ZR503/504/505/506



NOTE :

Lifting heights and boom angles are based on a straight (unladen) boom, and allowance should be made for boom deflection obtained under laden conditions.

≠ Specifications are subject to change without notice.



TECHNICAL SPECIFICATIONS

MODEL	TM-ZR503	TM-ZR504	TM-ZR505	TM-ZR506
CRANE CAPACITY	3,230kg at 3.7m (4 - part lines)		3,230kg at 3.6m (4 - part lines)	
BOOM	Fully telescoping boom of pentagonal box construction.		Fully powered partly synchronized telescoping boom of pentagonal box construction.	
Type	3		4	
Sections	4		5	
Length	3.47m - 8.31m		3.55m - 10.8m	
Extending Speed	4.84m / 18s		7.25m / 21s	
Elevation Range/Speed	1° to 78° / 12s			
Max. Hook Height*	Approx. 10.3m*	Approx. 12.7m*	Approx. 15.2m*	Approx. 17.5m*
Max. Load Radius*	8.09m*	10.58m*	13.12m*	15.47m*
WINCH	Hydraulic motor driven. Spur gear speed reduction, provided with mechanical brake.		Hydraulic motor driven. Spur gear speed reduction, provided with mechanical brake and cable follower.	
Max. Single Line Pull	7.94 kN (810 kgf)			
Max. Single Line Speed	76 m / min. (at 4th layer)			
Wire rope (Diameter x length)	8mm x 56m	8mm x 68m	8mm x 80m	8mm x 92m
SWING	Hydraulic motor driven. Worm gear speed reduction. Continuous 360° full circle swing on ball bearing slew ring. Automatic swing lock.			
Speed	2.5 min ⁻¹ (rpm)			
OUTRIGGERS	Manually extended sliders and hydraulically extended jacks. Integral with crane frame. Power up and down.			
Extended Width	Max. : 3.8m Mid. : 3.0m Min. : 2.2m			
HYDRAULIC SYSTEM	Single gear pump			
Pump	Multiple control valves with integral safety valve			
Control Valves				
STANDARD SAFETY EQUIPMENT	<ul style="list-style-type: none"> ● Load meter ● Load indicator ● Over-winding alarm ● P.T.O. indicator lamp ● Hook safety latch ● Level gauge ● Hydraulic safety valves, check valves and holding valves 			
SUITABLE TRUCKS	Gross vehicle mass 12,000 to 25,000kg			

NOTE :

- Operating speeds of the crane are guaranteed under the condition that the pump delivery is 60L/min.
- *No allowance made for boom deflection under laden conditions.



TADANO LTD.

(International Headquarters)

4-12, Kamezawa 2-chome, Sumida-ku,
Tokyo 130-0014, Japan
Tel: 81-3-3621-7752 Fax: 81-3-3621-7785

http://www.tadano.co.jp/indexe.htm
E-mail: tdnihq@tadano.co.jp