



TADANO



photo: "Hook In" system type

NEW

HYDRAULIC TRUCK LOADER CRANES

CARGO CRANE

ZR300 series

ZR306/305/304/303/302

The response of the new Cargo Crane ZR from Tadano is so good – as if the operator's thoughts become the crane operation.

We proudly announce the addition of the Cargo Crane ZR to the current ZF series. Tadano has reviewed all basic performance criteria, and produced a crane that is safer and easier to use. The new Cargo Crane ZR is strong, yet sensitive and flexible - responding like an extension of the operator's arm.

The ZR300 series, in terms of their operability, performance and height, are the mainstay of the mid-sized crane class. In addition to the standard specifications, the ZR300 series offer special options such as "Hook In" system and remote radio-control. Feel free to select the most suitable Cargo Crane ZR model to meet your goal and application.



Smooth boom extension and retraction

Special valves absorb shocks during boom extension and retraction - for smoother operation.

Neat, streamlined boom ends

The cables and sheaves of the 2 to 5-section booms are all internal - for a clean, clutter-free appearance.

Centralized control panels

All the important function switches and rated lifting capacity chart are grouped together in panels - one on each side of the crane.



Automatic swing lock

Locks the boom in place when the truck is being driven for greater safety.

Outriggers for absolute stability and safety

Handling so easy that the extension and retraction can be performed with one hand! Its unique double safety measures provide protection against accidental extension of the outrigger beam during travel and retraction during loading.

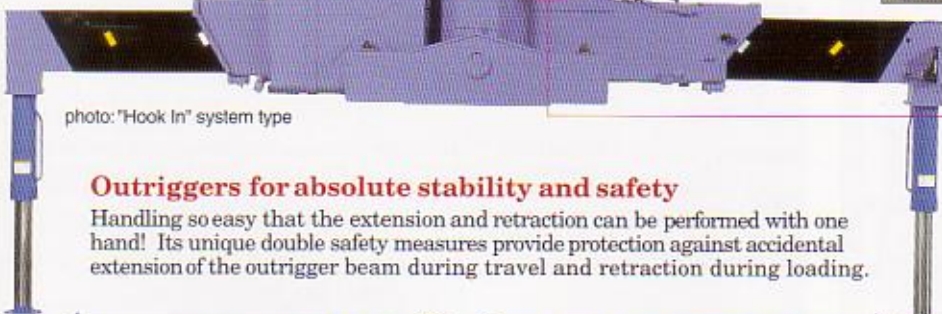


photo: "Hook In" system type

3.4m

OPTIONAL EQUIPMENT



Tadano One-touch "Hook-in" Further Eases Operation.

Sure proof of Tadano's leading position in the cargo handling industry can be seen in the development of its innovative "Hook-In" system. A push of a button and the crane hook is stowed automatically. No more manual belaying.

Advanced, High-Efficiency Remote Operation at the Touch of a Button

Tadano cranes all offer the push-button operating ease of hand-held remote control. A multi-channel remote controller permits simultaneous operation of several cranes in close proximity without worries about crosstalk interference, and the system's cab-top 'Diversity' antenna rejects other radio interference for clear, trouble-free operation. Advanced computerized self-diagnostics also ensure long-term reliability.

*This option is available subject to local laws and regulations.



ZR300 series

RATED LIFTING CAPACITIES

TM-ZR302								
3.27/5.5m boom								
Load Radius (m)	2.6 ^{min}	3.0	3.5	4.0	4.5	5.0	5.3	
Rated Lifting Capacity (kg)	3,030	2,530	2,060	1,780	1,580	1,380	1,330	

TM-ZR303								
3.27/5.5m boom								
Load Radius (m)	2.6 ^{min}	3.0	3.5	4.0	4.5	5.0	5.3	
Rated Lifting Capacity (kg)	3,030	2,480	2,030	1,730	1,530	1,330	1,280	
7.7m boom								
Load Radius (m)	2.7 ^{min}	3.2	3.5	4.0	4.5	5.0	5.5	6.0
Rated Lifting Capacity (kg)	2,330	2,030	1,780	1,480	1,280	1,130	1,030	930

TM-ZR305								
3.52/5.75m boom								
Load Radius (m)	2.4 ^{min}	2.5	3.0	3.5	4.0	4.5	5.0	5.55
Rated Lifting Capacity (kg)	3,030	2,780	2,280	1,930	1,630	1,430	1,250	1,080
7.95m boom								
Load Radius (m)	2.7 ^{min}	3.0	3.5	4.0	4.5	5.0	5.5	6.0
Rated Lifting Capacity (kg)	2,230	2,030	1,680	1,380	1,180	1,050	930	830
10.1m boom								
Load Radius (m)	4.0 ^{min}	5.0	6.0	7.0	8.0	9.0	9.92	
Rated Lifting Capacity (kg)	1,030	830	730	630	530	480	460	
12.3m boom								
Load Radius (m)	4.5 ^{min}	5.0	6.0	7.0	8.0	9.0	10.0	11.0
Rated Lifting Capacity (kg)	760	630	480	400	350	310	280	250

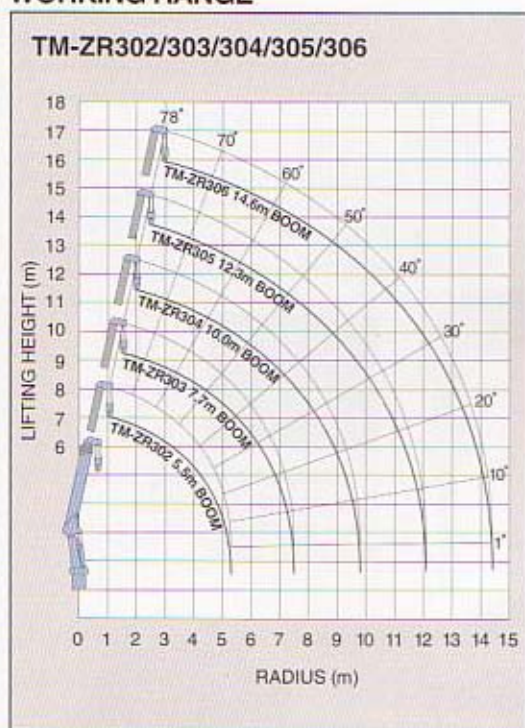
TM-ZR304								
3.34/5.57m boom								
Load Radius (m)	2.45 ^{min}	3.0	3.5	4.0	4.5	5.0	5.37	
Rated Lifting Capacity (kg)	3,030	2,330	1,980	1,680	1,480	1,280	1,180	
7.78m boom								
Load Radius (m)	2.7 ^{min}	3.2	3.5	4.0	4.5	5.0	5.5	6.0
Rated Lifting Capacity (kg)	2,330	2,030	1,730	1,430	1,230	1,080	980	880
10.0m boom								
Load Radius (m)	4.0 ^{min}	5.0	6.0	7.0	8.0	9.0	9.8	
Rated Lifting Capacity (kg)	1,030	830	730	630	560	500	480	

TM-ZR306								
3.65/5.87m boom								
Load Radius (m)	2.4 ^{min}	2.5	3.0	3.5	4.0	4.5	5.0	5.67
Rated Lifting Capacity (kg)	3,030	2,780	2,280	1,930	1,630	1,430	1,250	1,080
8.07m boom								
Load Radius (m)	2.7 ^{min}	3.0	3.5	4.0	4.5	5.0	5.5	6.0
Rated Lifting Capacity (kg)	2,230	2,030	1,680	1,380	1,180	1,050	930	830
10.2m boom								
Load Radius (m)	4.0 ^{min}	5.0	6.0	7.0	8.0	9.0	10.0	10.05
Rated Lifting Capacity (kg)	1,030	830	730	630	530	480	430	
12.4m boom								
Load Radius (m)	5.0 ^{min}	6.0	7.0	8.0	9.0	10.0	11.0	12.22
Rated Lifting Capacity (kg)	630	480	400	350	310	280	250	230
14.6m boom								
Load Radius (m)	4.9 ^{min}	6.0	7.0	8.0	9.0	10.0	11.0	12.0
Rated Lifting Capacity (kg)	330	280	250	230	210	190	170	160

NOTE :

- The mass of hook (30kg), slings and all similarly used load handling devices must be added to the mass of the load.
- Numerical values of rated lifting capacities are based on crane strength only. The rated lifting capacities based on stability may lower than those in the above table depending on the loading conditions and the types of the chassis.

WORKING RANGE



NOTE :

- Lifting heights and boom angles are based on a straight (unladen) boom, and allowance should be made for boom deflection obtained under laden conditions.

※ Some specifications are subject to change.



TECHNICAL SPECIFICATIONS

MODEL	TM-ZR302	TM-ZR303	TM-ZR304	TM-ZR305	TM-ZR306
CRANE CAPACITY	3,030kg at 2.6m (4 - part lines)		3,030kg at 2.55m (4 - part lines)		3,030kg at 2.4m (4 - part lines)
BOOM Type	Fully hydraulic telescoping boom of pentagonal box construction		Fully powered partly synchronized telescoping boom of pentagonal box construction		
Sections	2	3	4	5	6
Length	3.27m - 5.5m	3.27m - 7.7m	3.34m - 10.0m	3.52m - 12.3m	3.65m - 14.6m
Extending Speed	2.23m / 7sec	4.43m / 12sec	6.66m / 14sec	8.78m / 18sec	10.95m / 19sec
Elevation Range/Speed	1° - 78° / 7.5 sec				
Max. Hook Height*	Aprox. 7.0m*	Aprox. 9.2m*	Aprox. 11.4m*	Aprox. 13.7m*	Aprox. 15.9m*
Max. Load Radius*	5.3m*	7.5m*	9.8m*	12.1m*	14.4m*
WINCH	Hydraulic motor driven Spur gear speed reduction, provided with mechanical brake			Hydraulic motor driven Spur gear speed reduction, provided with mechanical brake and cable follower	
Max. Single Line Pull	7.45 kN (760 kgf)				
Max. Single Line Speed	78m / min. (at 4th layer)				
Wire rope	Diameter x length 8mm x 41m	Diameter x length 8mm x 51m	Diameter x length 8mm x 63m	Diameter x length 8mm x 74m	Diameter x length 8mm x 85m
SWING	Hydraulic motor driven. Worm gear speed reduction Continuous 360° full circle swing on ball bearing slew ring. Automatic swing lock				
Speed	2.5 min ⁻¹ (rpm)				
OUTRIGGERS	Manually extended sliders and hydraulically extended jacks Integral with crane frame. Power up and down				
Extended Width	Max.: 3.4m Mid.: 2.7m Min.: 2.0m				
HYDRAULIC SYSTEM	Single gear pump				
Pump	Multiple control valves with integral safety valve				
Control Valves					
STANDARD SAFETY EQUIPMENT	●Load meter ●Load indicator ●Over-winding alarm ●P.T.O indicator lamp ●Hook safety latch ●Level gauge ●Hydraulic safety valves, check valves and holding valves				
SUITABLE TRUCKS	Gross vehicle mass (including crane mass) 7.5 to 10 tons				

NOTE :

- Operating speeds of the crane are guaranteed under the condition that the pump delivery is 60ℓ / min.
- *No allowance made for boom deflection under laden conditions.



TADANO

TADANO LTD.

(International Headquarters)

4-12, Kamezawa 2-chome, Sumida-ku,
Tokyo 130-0014, Japan

Tel: 81-3-3621-7752 Fax: 81-3-3621-7785

<http://www.tadano.co.jp/indexe.htm>

E-mail: tdnihq@tadano.co.jp