



TADANO

HYDRAULIC TRUCK LOADER CRANES

CARGO CRANE

ZR290 series

ZR296/295/294/293

NEW



photo: "Hook In" system type

The new Cargo Crane ZR from Tadano with a response like an extension of the operator's thoughts

We proudly announce the addition of the Cargo Crane ZR series to the current ZF series – cranes that are safer and easier to use, yet strong, sensitive and flexible. In addition to the standard specifications, the ZR290 series offer special options such as "Hook In" system and remote radio-control.

Feel free to select the most suitable Cargo Crane ZR model to meet your goals and application.

Automatic swing lock

Locks the boom in place when the truck is being driven for greater safety.



Smooth boom extension and retraction

Special valves absorb shocks during boom extension and retraction - for smoother operation.

Neat, streamlined boom ends

The cables and sheaves of the 3 to 5-section booms are all internal - for a clean, clutter-free appearance.

Centralized control panels

All the important function switches and rated lifting capacity chart are grouped together in panels - one on each side of the crane.



Outriggers for absolute stability and safety

Handling so easy that the extension and retraction can be performed with one hand! Its unique double safety measures provide protection against accidental extension of the outrigger beam during travel and retraction during loading.

3.4m

OPTIONAL EQUIPMENT

Tadano One-touch "Hook-in" Further Eases Operation.

Sure proof of Tadano's leading position in the cargo handling industry can be seen in the development of its innovative "Hook-In" system. A push of a button and the crane hook is stowed automatically. No more manual belaying.

Advanced, High-Efficiency Remote Operation at the Touch of a Button

Tadano cranes all offer the push-button operating ease of hand-held remote control. A two-channel remote controller permits simultaneous operation of several cranes in close proximity without worries about crosstalk interference, and the system's cab-top "Diversity" antenna rejects other radio interference for clear, trouble-free operation. Advanced computerized self-diagnostics also ensure long-term reliability.



ZR290 series

RATED LIFTING CAPACITIES

TM-ZR293								
2.85m / 4.72m boom								
Load Radius (m)	1.5	2.0	2.5	3.0	3.5	4.0	4.52	
Rated Lifting Capacity (kg)	3,030	2,290	1,830	1,480	1,250	1,080	960	
6.6m boom								
Load Radius (m)	2.2	2.5	3.0	3.5	4.0	4.5	5.0	5.5
Rated Lifting Capacity (kg)	1,880	1,630	1,330	1,130	960	860	780	700
7.01m boom								
Load Radius (m)	2.2	2.5	3.0	3.5	4.0	4.5	5.0	5.5
Rated Lifting Capacity (kg)	1,880	1,630	1,330	1,130	960	860	780	700
8.9m boom								
Load Radius (m)	3.0	3.5	4.0	5.0	6.0	7.0	8.0	8.7
Rated Lifting Capacity (kg)	960	880	780	630	530	430	360	330
TM-ZR294								
3.17m / 5.12m boom								
Load Radius (m)	1.5	2.0	2.5	3.0	3.5	4.0	4.5	4.92
Rated Lifting Capacity (kg)	3,030	2,290	1,830	1,480	1,250	1,080	930	830
7.01m boom								
Load Radius (m)	2.2	2.5	3.0	3.5	4.0	4.5	5.0	5.5
Rated Lifting Capacity (kg)	1,880	1,630	1,330	1,130	960	860	780	700
8.9m boom								
Load Radius (m)	3.0	3.5	4.0	5.0	6.0	7.0	8.0	8.7
Rated Lifting Capacity (kg)	960	880	780	630	530	430	360	330
TM-ZR295								
3.13m / 5.07m boom								
Load Radius (m)	1.45	2.0	2.5	3.0	3.5	4.0	4.5	4.87
Rated Lifting Capacity (kg)	3,030	2,130	1,730	1,430	1,230	1,030	900	830
7.0m boom								
Load Radius (m)	2.2	2.5	3.0	3.5	4.0	4.5	5.0	5.5
Rated Lifting Capacity (kg)	1,730	1,530	1,280	1,080	930	830	730	680
8.9m boom								
Load Radius (m)	3.0	3.5	4.0	5.0	6.0	7.0	8.0	8.7
Rated Lifting Capacity (kg)	930	830	730	580	480	410	360	330
10.8m boom								
Load Radius (m)	4.0	4.5	5.0	6.0	7.0	8.0	9.0	10.0
Rated Lifting Capacity (kg)	480	430	380	300	260	230	200	180

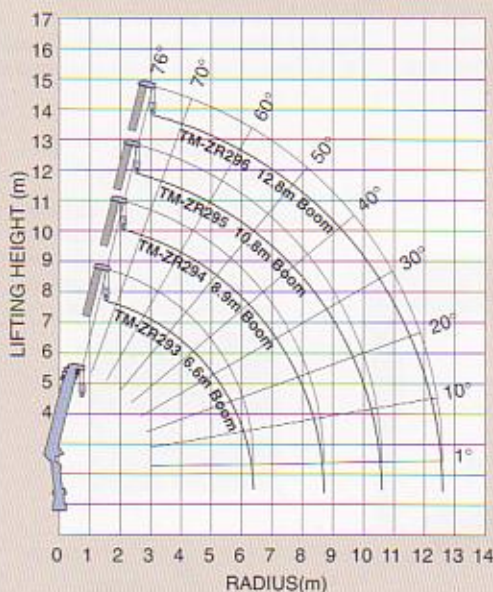
TM-ZR296									
3.23m / 5.17m boom									
Load Radius (m)	1.45	2.0	2.5	3.0	3.5	4.0	4.5	4.97	
Rated Lifting Capacity (kg)	3,030	2,130	1,730	1,430	1,230	1,030	880	750	
7.1m boom									
Load Radius (m)	2.2	2.5	3.0	3.5	4.0	4.5	5.0	5.5	
Rated Lifting Capacity (kg)	1,730	1,530	1,280	1,080	930	830	730	680	
9.0m boom									
Load Radius (m)	3.0	3.5	4.0	5.0	6.0	7.0	8.0	8.8	
Rated Lifting Capacity (kg)	930	830	730	580	480	410	360	330	
10.9m boom									
Load Radius (m)	4.0	4.5	5.0	6.0	7.0	8.0	9.0	10.0	
Rated Lifting Capacity (kg)	480	430	380	300	260	230	200	180	
12.8m boom									
Load Radius (m)	5.3	6.0	7.0	8.0	9.0	10.0	11.0	12.6	
Rated Lifting Capacity (kg)	280	240	210	180	160	140	130	100	

NOTE :

- The mass of hook (90kg), slings and all similarly used load handling devices must be added to the mass of the load.
- Numerical values of rated lifting capacities are based on crane strength only. The rated lifting capacities based on stability may lower than those in the above table depending on the loading conditions and the types of the chassis.

WORKING RANGE

TM-ZR293/294/295/296



NOTE :

Lifting heights and boom angles are based on a straight (unladen) boom, and allowance should be made for boom deflection obtained under laden conditions.

TECHNICAL SPECIFICATIONS

MODEL	TM-ZR293	TM-ZR294	TM-ZR295	TM-ZR296
CRANE CAPACITY	3,030kg at 1.5m (4 - part lines)		3,030kg at 1.45m (4 - part lines)	
BOOM	Fully powered synchronized telescoping boom of pentagonal box construction		Fully powered partly synchronized telescoping boom of pentagonal box construction	
Type				
Sections	3	4	5	6
Length	2.85m - 6.6m	3.17m - 8.9m	3.13m - 10.8m	3.23m - 12.8m
Extending Speed	3.75m / 10sec	5.73m / 13sec	7.67m / 15.5sec	9.57m / 17sec
Elevation Range/Speed	1° to 76° / 6.0 sec			
Max. Hook Height*	Aprox. 7.8m*	Aprox. 10m*	Aprox. 11.8m*	Aprox. 13.8m*
Max. Load Radius*	6.4m*	8.7m*	10.6m*	12.6m*
WINCH	Hydraulic motor driven Spur gear speed reduction, provided with mechanical brake		Hydraulic motor driven Spur gear speed reduction, provided with mechanical brake and cable follower	
Max. Single Line Pull	7.45 kN (760 kgf)			
Max. Single Line Speed	66m / min. (at 4th layer)			
Wire rope (Diameter x length)	8mm x 45m	8mm x 56m	8mm x 66m	8mm x 75m
SWING	Hydraulic motor driven Worm gear speed reduction Continuous 360° full circle swing on ball bearing slew ring Automatic swing lock			
Speed	2.5 min ⁻¹ (rpm)			
OUTRIGGERS	Manually extended sliders and hydraulically extended jacks Integral with crane frame Power up and down			
Extended Width	Max. : 3.4m Mid. : 2.9m / 2.4m Min. : 1.72m			
HYDRAULIC SYSTEM	Single gear pump			
Pump				
Control Valves	Multiple control valves with integral safety valve			
STANDARD SAFETY EQUIPMENT	<ul style="list-style-type: none"> ● Load meter ● Load indicator ● Over-winding alarm ● P.T.O. indicator lamp ● Hook safety latch ● Level gauge ● Hydraulic safety valves, check valves and holding valves 			
SUITABLE TRUCKS	Gross vehicle mass 4,000 to 8,000kg			

NOTE :

- Operating speeds of the crane are guaranteed under the condition that the pump delivery is 53ℓ / min.
- *No allowance made for boom deflection under laden conditions.

※ Some specifications are subject to change.



TADANO LTD.

(International Headquarters)

4-12, Kamezawa 2-chome, Sumida-ku,
Tokyo 130-0014, Japan

Tel: 81-3-3621-7752 Fax: 81-3-3621-7785

<http://www.tadano.co.jp/indexe.htm>

E-mail : tdnihq@tadano.co.jp