



HYDRAULIC TRUCK LOADER CRANES

CARGO CRANE

ZR800 *series*

ZR805 / 804 / 803

*TADANO New ZR800 Series,
a typical model of the ZR series,
has an enhanced
lifting capacity of 8,200kg.*

ZR800 series is equipped with hydraulic power slide outriggers of Max extension 4.3m.

ZR800 series

RATED LIFTING CAPACITIES

TM-ZR803						
4.20m boom						
Load Radius (m)	1.8	2.4	2.9	3.5	4.0	3.95
Rated Lifting Capacity (kg)	8,200	6,000	5,000	4,200	3,500	3,750
6.88m boom						
Load Radius (m)	2.4	2.9	3.5	4.0	4.5	5.0
Rated Lifting Capacity (kg)	6,000	5,000	4,200	3,700	3,300	2,900
9.50m boom						
Load Radius (m)	4.8	6.0	7.0	8.0	9.0	9.25
Rated Lifting Capacity (kg)	3,000	2,250	1,850	1,550	1,300	1,300

TM-ZR804						
4.31m boom						
Load Radius (m)	1.8	2.4	2.9	3.5	4.0	4.06
Rated Lifting Capacity (kg)	8,200	6,000	5,000	4,200	3,650	3,650
7.19m boom						
Load Radius (m)	2.4	2.9	3.5	4.0	4.5	5.0
Rated Lifting Capacity (kg)	6,000	5,000	4,200	3,700	3,300	2,900
10.05m boom						
Load Radius (m)	4.8	6.0	7.0	8.0	9.0	9.8
Rated Lifting Capacity (kg)	3,000	2,200	1,800	1,550	1,350	1,200
12.91m boom						
Load Radius (m)	4.5	5.0	6.0	7.0	8.0	9.0
Rated Lifting Capacity (kg)	3,000	2,650	2,200	1,800	1,500	1,300

TM-ZR805						
4.4m boom						
Load Radius (m)	1.8	2.4	2.9	3.5	4.15	4.15
Rated Lifting Capacity (kg)	8,200	6,000	5,000	4,200	3,550	3,550
7.28m boom						
Load Radius (m)	2.4	2.9	3.5	4.0	4.5	5.0
Rated Lifting Capacity (kg)	6,000	5,000	4,200	3,700	3,300	2,900
10.16m boom						
Load Radius (m)	4.6	5.0	6.0	7.0	8.0	9.0
Rated Lifting Capacity (kg)	3,000	2,700	2,200	1,800	1,400	1,150
13.04m boom						
Load Radius (m)	4.5	5.0	6.0	7.0	8.0	9.0
Rated Lifting Capacity (kg)	3,000	2,600	2,000	1,700	1,400	1,150
15.92m boom						
Load Radius (m)	5.0	6.0	7.0	8.0	9.0	11.0
Rated Lifting Capacity (kg)	2,600	2,000	1,650	1,400	1,150	900

NOTES :

- The mass of the hook (90 kg), slings and all similarly used load handling devices must be added to the mass of the load.
- The above numerical values of rated lifting capacities are based on crane strength only. The rated lifting capacities based on stability may lower than those in the above table depending on the loading conditions and the types of the chassis.

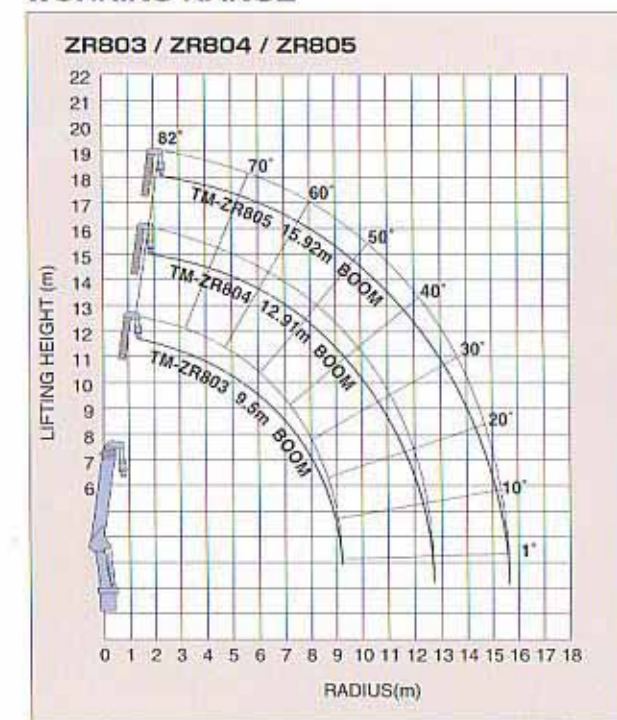
TECHNICAL SPECIFICATIONS

MODEL	ZR803	ZR804	ZR805
CRANE CAPACITY	8,200 kg at 1.8 m (6-part lines)		
BOOM	Fully hydraulic telescoping boom of pentagonal box construction	Fully powered partly synchronized telescoping boom of pentagonal box construction	Fully powered partly synchronized telescoping boom of pentagonal box construction
Type			
Sections	3	4	5
Length	4.20m-9.50m	4.31m-12.91m	4.40m-15.92m
Extending Speed	5.30m / 18s	8.60m / 25s	11.52m / 32s
Elevation Range/Speed	1° to 82° / 14s		
Max. Hook Height	Approx. 11.3m	Approx. 14.5m	Approx. 17.5m
Max. Load Radius	9.25m	12.66m	15.67m
WINCH	Hydraulic motor driven. Spur gear speed reduction, provided with automatic brake and cable follower		
Max. Single Line Pull	13.40kN {1,367kgf}		
Max. Single Line Speed	60m / min (at 4th layer)		
Wire rope (Diameter x length)	10mmX63m	10mmX80m	10mmX95m
SWING	Hydraulic motor driven. Worm gear speed reduction. Continuous 360° full circle swing on ball bearing slew ring. Automatic swing lock.		
Speed	2.5 min ⁻¹ (rpm)		
OUTRIGGERS	Hydraulically extended sliders and hydraulically extended jacks integral with crane frame. Power up and down.		
Extended Width	Max.: 4.3m Mid.: 3.3m Min.: 2.25m		
HYDRAULIC SYSTEM	Single gear pump		
Pump			
Control Valves	Multiple control valves with integral safety valve		
STANDARD SAFETY EQUIPMENT	<ul style="list-style-type: none"> ● Load meter ● Load indicator ● Hoisting limiter ● P.T.O. indicator lamp ● Hook safety latch ● Level gauge ● Hydraulic safety valves, check valves and holding valves 		
SUITABLE TRUCKS	Gross vehicle mass 20,000 to 25,000 kg		

NOTE :

Operating speeds of the crane are guaranteed under the condition that the pump delivery is 80L/min.

WORKING RANGE



NOTE :

The above lifting heights and boom angles are based on a straight (untladen) boom, and allowance should be made for boom deflection obtained under laden conditions.

*Some specifications are subject to change without notice.

TADANO LTD.

(International Headquarters)
4-12, Kamezawa 2-chome, Sumida-ku
Tokyo 130-0014, Japan
Tel: 81-3-3621-7752 Fax: 81-3-3621-7785

<http://www.tadano.co.jp/indexe.htm> E-mail : tdnihq@tadano.co.jp



ZR800-2001-06-3000-1
Printed in Japan