



**TADANO**

HYDRAULIC TRUCK LOADER CRANES



**ZF603G**

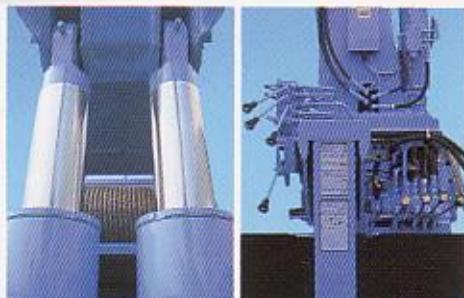
6 ton capacity (6.6 short tons)

# The Answer to Heavy Load Handling Needs



## Designed To Make Big Loads Small

The ZF603G can boast of having the longest boom for models in its class. The rugged pentagon-shaped boom is operated by two large-diameter cylinders to a maximum lifting angle of 85°. The low-noise winch provides power to spare. Other standard features include the rough-winding prevention device and automatic acceleration.



Two Large-Diameter Cylinders

Auto-Acceleration

# ZF603G

## TOTAL RATED LOADS

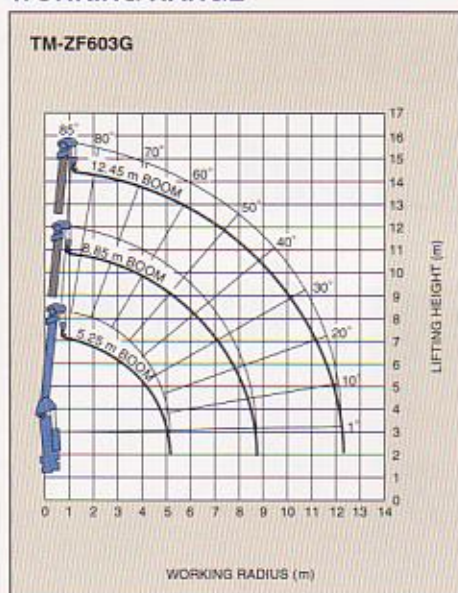
TM-ZF603G					
5.25 boom		8.85 boom		12.45 boom	
Working Radius (m)	Total Rated Load (kg)	Working Radius (m)	Total Rated Load (kg)	Working Radius (m)	Total Rated Load (kg)
2.25	6,000	2.25	3,000	2.25	3,000
3.0	4,500	3.0	3,000	3.0	3,000
4.0	3,350	4.0	3,000	4.0	3,000
4.4	3,000	4.4	3,000	4.4	3,000
5.0	2,600	5.0	2,600	5.0	2,600
		6.0	2,100	6.0	2,100
		7.0	1,650	7.0	1,650
		8.0	1,350	8.0	1,350
		8.6	1,200	9.0	1,150
				10.0	1,000
				11.0	900
				12.2	800



### NOTES:

- Each total rated load includes weight of the hook (55 kg) and slings.
- The above numerical values of total rated loads are based on crane strength only. The total rated loads based on stability may be lower than those in the above table depending on the loading conditions and the types of the chassis.

## WORKING RANGE



**NOTE:** The above lifting heights and boom angles are based on a straight (unladen) boom, and allowance should be made for boom deflection obtained under laden conditions.

## TECHNICAL SPECIFICATIONS

MODEL	ZF603G
<b>MAXIMUM CAPACITY</b>	6,000 kg at 2.25 m
<b>BOOM</b>	Fully power synchronized telescoping boom equipped with boom rest
Type	
Sections	3
Length	5.25 – 12.45 m
Extension speed	7.2 m/26 sec.
Elevation range/speed	1° – 85° in 19 sec.
Maximum hook height*	Approx. 14.6 m*
Maximum working* radius	12.2 m*
<b>WINCH</b>	Hydraulic motor driven spur gear speed reduction, provided with automatic brake
Permissible single line pull	1,500 kg
Max. single line speed	42.8 m/min. (at 4th layer)
Wire rope	Diameter × length: 10 mm × 77 m
<b>SWING</b>	Hydraulic motor driven worm gear speed reduction Continuous 360° full circle swing on ball bearing ring
Speed	2.0 rpm
<b>OUTRIGGERS</b>	Manually extended sliders and hydraulically extended jacks Integral with crane frame, Power up and down
Extended width	Maximum: 3.8 m Midway: 3.0 m Minimum: 2.25 m
<b>HYDRAULIC SYSTEM</b>	
Pump	Single gear pump
Control valves	Multiple control valves with integral safety valve
<b>STANDARD SAFETY EQUIPMENT</b>	<ul style="list-style-type: none"> <li>● Load meter ● Boom angle indicator ● Overwinding alarm</li> <li>● Hook safety latch</li> <li>● Hydraulic safety valves, check valves and holding valves</li> </ul>
<b>SUITABLE TRUCKS</b>	Gross vehicle weight approx. 20 to 25 tons

- NOTES:**
- Operating speeds of the crane are guaranteed under the condition that the pump delivery is 60 liter/min.
  - \* No allowance made for boom deflection under laden condition.



**TADANO LTD.**

4-12, Kamezawa 2-chome,  
Sumida-ku, Tokyo 130-0014, Japan  
Tel: 81-(0)3-3621-7752  
Fax: 81-(0)3-3621-7785