

LINK-BELT SPEEDER

35-TON HC-98A gives powerful



EXCLUSIVE SPEED-O-MATIC POWER HYDRAULIC CONTROLS use variable pressure control valves to assure perfect "feel" of the load, more accurate, safer operation.

TABLE OF CONTENTS

	PAGE
INTRODUCTION	2-3
CARRIER	4-5
SPEED-O-MATIC CONTROLS	6-7
UPPER MACHINERY (Standard)	8-9
UPPER MACHINERY (Optional)	10
CRANE BOOM (Angle-type)	11
CRANE BOOM ("Hi-Lite")	12-13
STRIP-DOWN	14-15
BUYER'S GUIDE	16

Out-picks competitive rigs at extended radii, hoists and booms with full two-directional power control, sheds weight quickly for job-to-job travel

BEST COST/CAPACITY RATING: At extended boom radii (where it usually counts most) the 35-ton HC-98A outlifts similarly rated competitive rigs by a big margin. On many jobs the HC-98A actually out-performs truck-crane with higher capacity ratings. For this EXTRA capacity, for this EXTRA profit, you pay nothing extra. This is *move-ahead* design . . . and only Link-Belt Speeder has it!

PRECISION HOISTING AND SPOTTING OF LOAD! Speed-o-Matic power hydraulic controls offer "true feel" on every job. Short-throw, fingertip levers provide machine response that is smooth, fast, positive, precise, gives your operator and men on the job that confident feeling of safety.

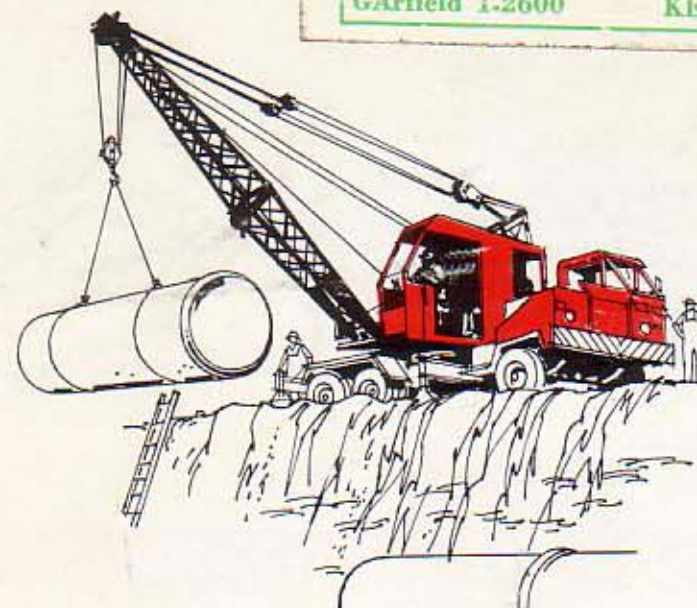
SEPARATE POWER FLOW FOR EACH MACHINE OPERATION Full-Function Design makes all machine moves completely independent. Your operator can *simultaneously* raise or lower either or both hoist drums, swing and boom up or down . . . all under power.

NEW MEASURE OF SAFETY! Independent boomhoist *powers boom up and down* and has a standard lowering clutch that starts and lowers boom smoothly, precisely. Optional boomhoist lever kick-out device on boomhoist control makes it impossible to power the boom back over the cab. Also available, a crane boom angle indicator is as good as radar . . . reflects the angular position of the boom at all times . . . for safe capacity.

Exclusive reversing clutches optional for *either or both* main drums command precise, two-directional power for hoist drums. Power down the lightest load safely . . . hoist the heaviest one with ease.

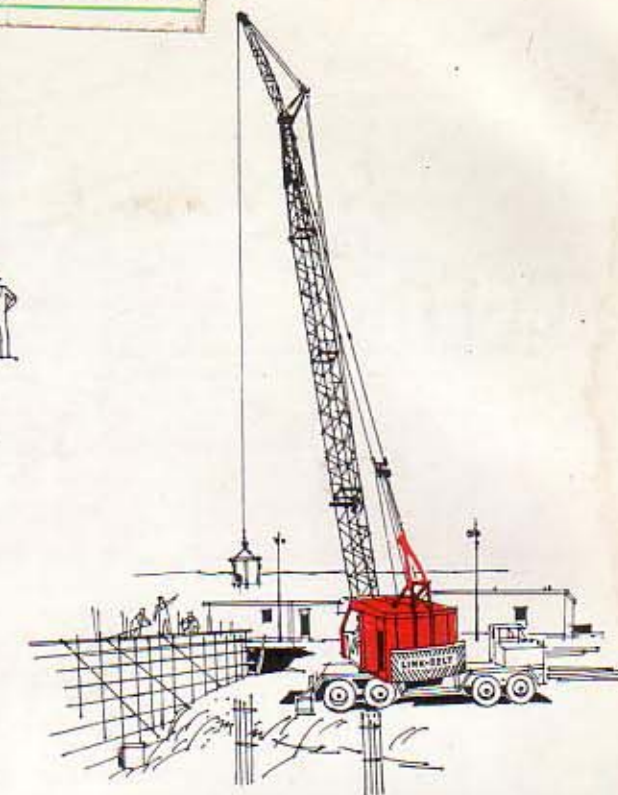
OUTSTANDING TRANSPORTABILITY! The HC-98A with "Hi-Lite" boom strips down in 55 minutes and without the extra service-expense of an auxiliary crane. See page 14 for a proof demonstration.

Miller Equipment Company of Detroit
32910 PLYMOUTH ROAD — LIVONIA, MICHIGAN
P. O. BOX 2036
GARfield 1-2600 KENwood 4-8309



LINK-BELT
SPEEDER

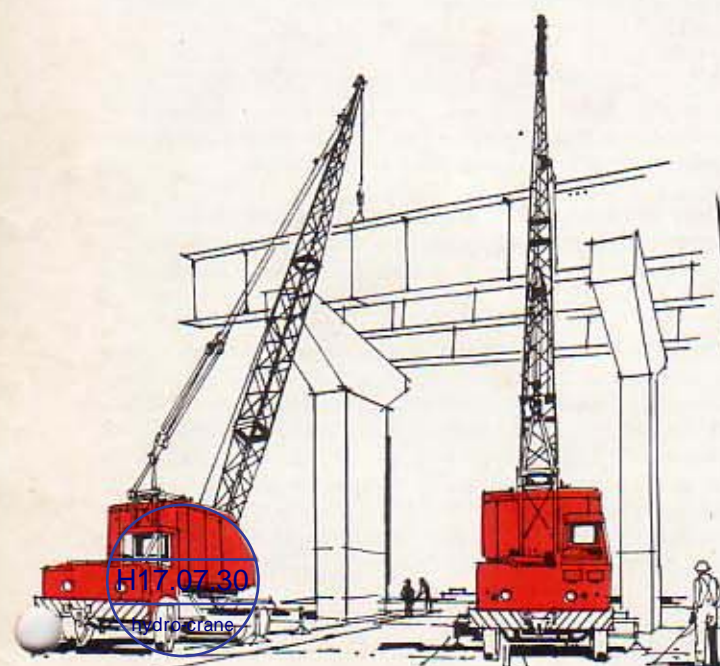
35-ton capacity truck-crane



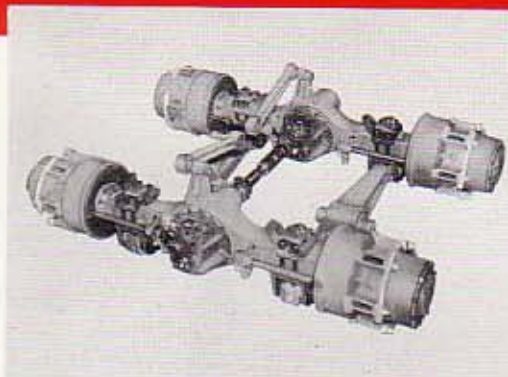
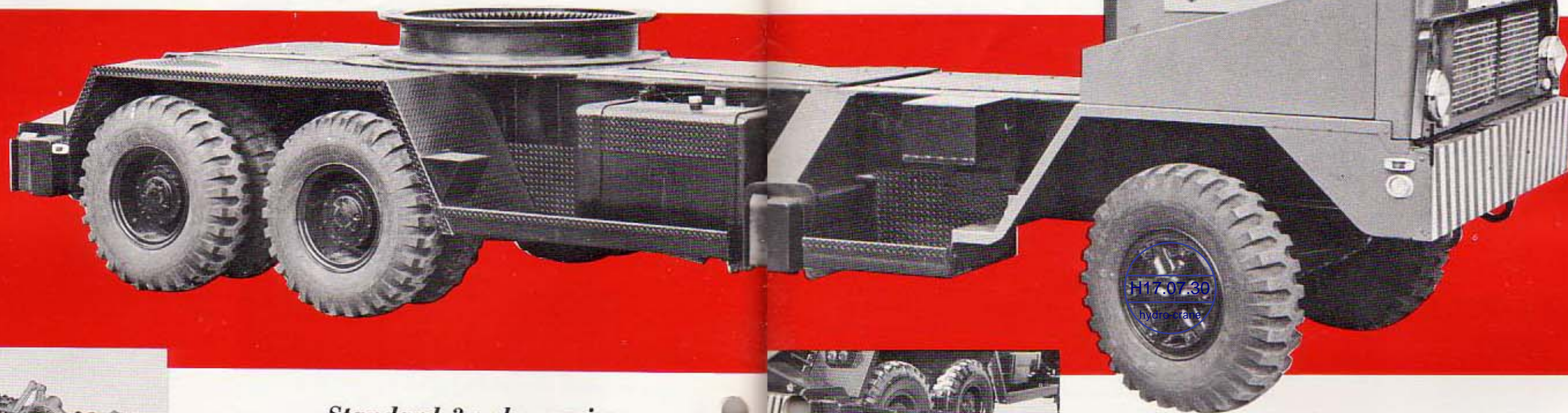
HC-98A

Lephyrcrane

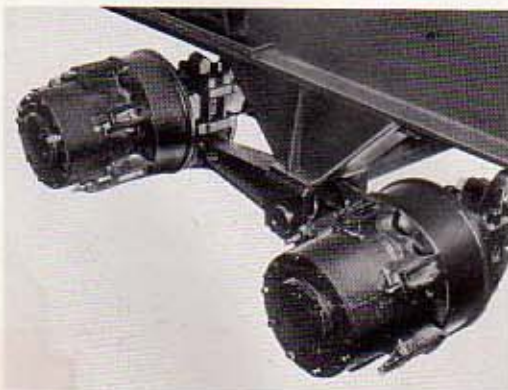
with Speed-o-Matic power hydraulic controls . . . featuring angle-type boom and revolutionary "HI-LITE" boom



cat-quick on the road... tigers on the job



PLANETARY AXLES are well suited for truck-crane carriers because they provide high mechanical efficiency and place the final force at the rim of the wheel for greater traction effort. Additional advantages are their relative lightweight, low maintenance record and high ground clearance.



BOGIE OR WALKING BEAM SUPPORT for rear axles on 3-axle carrier or both front and rear axles on the optional 4-axle carrier, allows tandem wheels to follow uneven terrain for maximum traction and mobility.

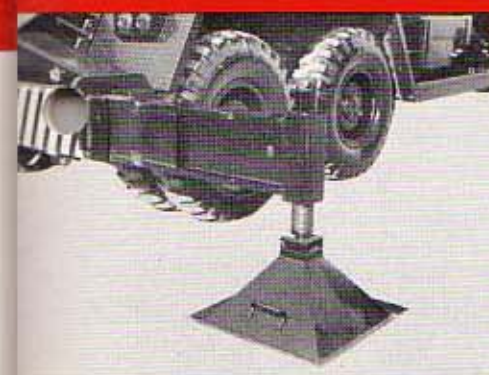
Standard 3-axle carrier

Custom-built to Link-Belt Speeder's specifications, this specially designed carrier provides a sturdy, stable working platform for all lifting crane jobs... offers the quality construction needed for many years of trouble-free service. A few of the outstanding standard features include hydraulic power steering, 12 forward and 3 reverse speeds, 6 x 4 drive with 6-wheel air brakes, diamond plate rear fenders, 9-foot over-all width. Optional features, include choice of diesel engines, 6 x 6 drive with 6-wheel air brakes, 10' rear axle and electric remote control including 5-speed main transmission.

Hydraulic Outriggers New Separate Out and Down Control



HYDRAULIC OUTRIGGER JACKS AND BEAMS (optional). Power Hydraulics, instead of muscle power, quickly extends or retracts outrigger beams and jacks for faster set-up or get-away. Each of the four outrigger points has separate out and down control that adapts to any restriction... width or slope. Check valves in hydraulic jacks assure maximum safety for all lifts. All this without increase to overall carrier width.



REMOVABLE FRONT AND REAR OUTRIGGER BOXES AND BEAMS add to the ease of stripping weight from the HC-98A for highway travel. Screw-type outrigger jacks are optional and the lightweight pontoons, also optional, feature a quick connect and disconnect socket. When moving short distances, jacks can be raised without removing the pontoons.



Optional 4-axle carrier

This sturdy, highly mobile carrier was designed specifically to distribute axle loadings more evenly over the full length of the carrier. Front and rear tandem axles are bogie mounted. Standard features include 8 x 4 drive with 6-wheel air brakes, 12 speeds forward and 3 reverse, power steering, planetary rear axles, removable front and rear outrigger boxes and beams and diamond plate rear fenders. Optional equipment is the same as listed for the 3-axle carrier, plus 8-wheel air brakes.



ACID TEST FOR TRUCK-CRANES in logging operations. Here's where stability, mobility, strength of components, high line pulls and ease of control are all required. And in this tough test, Link-Belt Speeder Zephyr cranes have earned an enviable reputation.



ONLY FULL-FUNCTION DESIGN GIVES YOU A SEPARATE POWER TRAIN for each machine operation . . . more standard features plus a wider choice of factory- or field-installed optional features that do not restrict any other operation.

new meaning to truck-crane profitability . . .



HEAVY DUTY, STABLE CARRIERS take the rig safely from job to job. Offer a wide-long base for every lift . . . on rubber or outriggers. Like the upper . . . it's versatile too, with this four-axle option.



PINPOINT SPOTTING OF HEAVY OR LIGHT LOADS. The operator has perfect feel of the load at all times. He never "prays it in." Boomhoist lever kick-out makes close-radius booming extra safe.



MILE AFTER MILE OF PRECISION WORK without accidents or pipe damage . . . precise power hydraulic control of boom and swing plus power load lowering is the answer.

Angle-type boom . . .

for general use . . .



THREE SHEAVE HEAD MACHINERY mounted on anti-friction bearings. No need to lower boom for daily greasing. Triple sheaves permit multiple reeving of hoist line for extra fine control and spotting loads. Jib peak sheaves also on anti-friction bearings.



BOOMHOIST LEVER KICK-OUT (optional for Angle-Type boom or HI-LITE boom see pages 12-13) makes close radius booming extra safe. No danger of booming up to, or beyond, the balancing point since the boom will first strike the bolt head that triggers release of the boomhoist lever. Once the boomhoist clutch is disengaged, the automatic spring-applied boomhoist brake holds boom at that position until lowering is desired.



RETRACTABLE HIGH GANTRY, standard equipment for both booms, can be quickly raised or lowered under boomhoist power . . . allows operation from either position. (Also used for powered counterweight removal—see page 13). Available for one-man, powered gantry lowering is a hydraulic jack device.

Ideally suited to all general purpose lifting crane applications is the standard angle-type boom. It's of two-piece, box lattice construction, 34" deep by 34" wide at the connections, with alloy steel chord angles and has pin connections as standard. By means of 5, 10, 15 and 20 foot extensions the basic 40 foot boom can be lengthened to the recommended maximum of 100 feet. And, with the high capacity 20 foot jib and 10 foot jib extensions a total recommended reach of 100 feet of main boom plus 40 foot of jib is possible.

EXTENDER CABLES standard for both angle-type and "Hi-Lite" booms permit use of a boomhoist cable of constant length that does not require changing when boom extensions are removed or added.



SPRING LOADED, RIGID BOOM RACKSTOPS are standard for the angle-type boom only and assure more rigid support at minimum radius.



H17.07.30

hydro-crane