

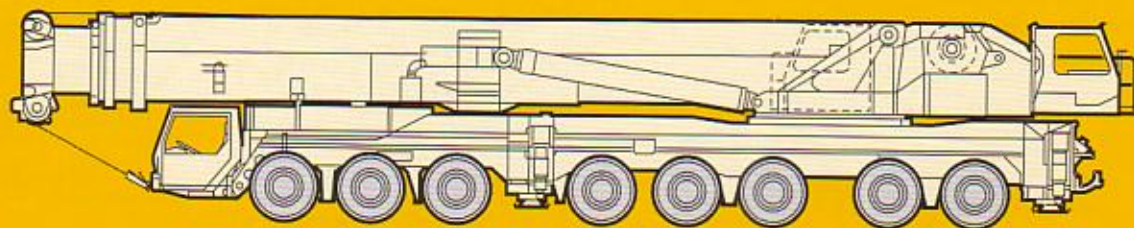
Technische Daten
Technical Data
Caractéristiques techniques

LTM 1500

Mobilkran
Mobile Crane
Grue automotrice

Teleskopausleger
Telescopic boom
Flèche télescopique

max. 50 m



LIEBHERR



Counterweight frame - compact and quickly mountable.

- Modular set-up of the counterweight frame, consisting of base frame and two winch packages, compact transport unit
- Winch 2 and winch 3 with luffing block are pinned and thus quickly interchangeable if required, e.g. for the application of a second LTM 1500
- The winches are connected to the hydraulic system of the crane by rapid action couplings
- Auxiliary winch with control panel for reeving of the hoist rope and luffing rope

