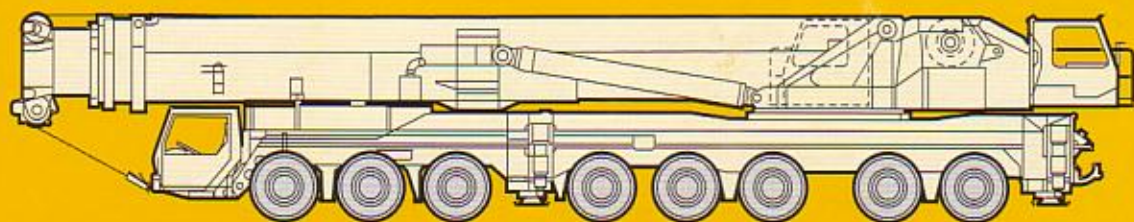


Technische Daten
Technical Data
Caractéristiques techniques

LTM 1500

Zusatzblatt zum technischen Datenblatt.
Supplement to technical data sheet.
Supplément au descriptif.



LIEBHERR



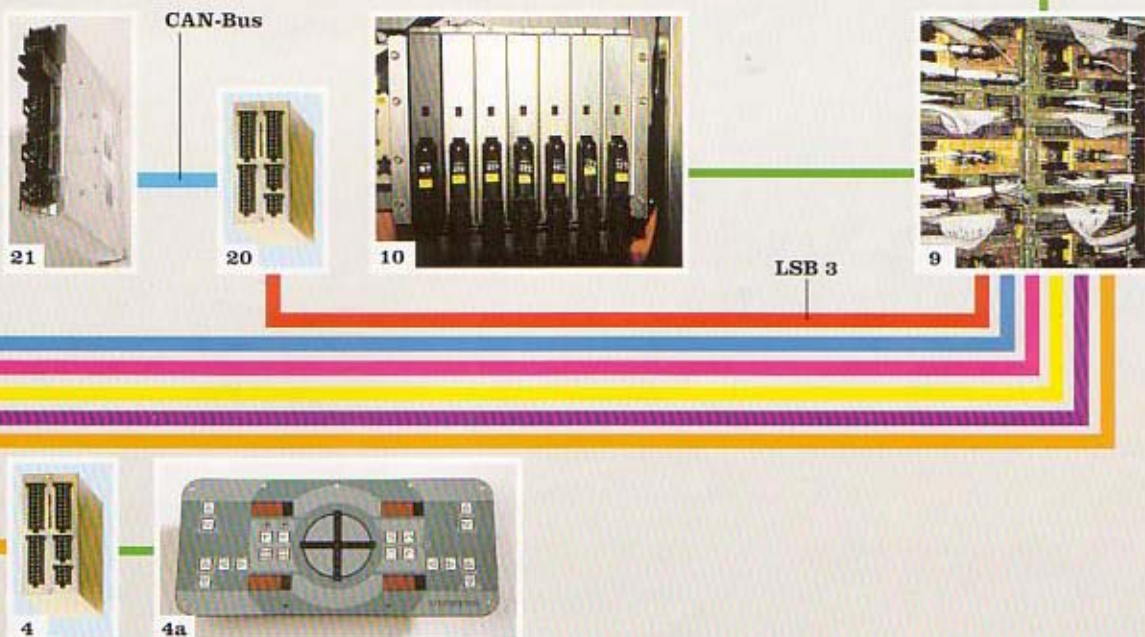
Multi-variable boom configuration system.

- Telescopic boom T, 16.1 m - 84 m, also with additional guying system TA
- Fixed lattice jib TF, 14 m - 63 m, mountable at 0° or 20°, also with additional guying system TAF
- Luffing lattice jib TN, 21 m - 91 m, mountable to the 16.1 m - 78.8 m long telescopic boom at an inclination of 83°, 75° and 67°, also with additional guying system TAN
- Intermediate sections of the TF and TN configuration are identical and can be slid into one another for transportation
- Jib A-frames with T-adapter and N-base section form a complete mounting/transport unit and can be mounted with 4 pins only
- Easy-to-rig stay rods which remain on the intermediate sections during transportation
- Standard auxiliary winch for easy reeving of the hoist and luffing ropes
- Rigging of the jib is practicable in suspended condition on restricted sites
- Winch 2 for 2-hook operation or for operation with mast nose
- Winch 3 for luffing of the jib
- Hinged boom head which can be pinned to telescope 2 or 3; substitute for the 50/84 m boom head section, providing immediate readiness for crane operation for the supporting and ballasting procedure



Applications.

- 1 Input/output modules for electronic control of suspension, Liebherr Diesel engine, automatic transmission, operating functions, compressed air control for brake function
- 1a Instruments-key board unit in driver's cabin
- 2 Input/output module for differential locks, display functions
- 3 Input/output module for outriggers - right
- 3a Control unit for outriggers - right
- 4 Input/output module for outriggers - left
- 4a Control unit for outriggers - left
- 5 Input/output module for engine brake, tempostat, tempreset, electronic control of Diesel engine (steering column switch, right) and automatic transmission
- 6 Control of Allison automatic transmission
- 7 Control of injection pump Liebherr Diesel engine/carrier
- 8 Slewing sensor slipping unit
- 9 Connection Liebherr system bus (LSB 1, 2, 3, 4, 5, 6)
- 10 LICCON central unit
- 11 LICCON monitors in the crane cabin
- 12 Length sensor
- 13 Cable drum/energy cable for interlocking gripper/telescopic boom
- 14 Inductive sensors (12 x)
- 15 Angle sensor on the base section
- 16 Cable drum for items 17, 18, 19 and jib
- 17 Wind sensor
- 18 Hoist limit switch
- 19 Angle sensor
- 20 Input/output module for electronic control of Diesel engine/superstructure, air flap, ventilator clutch, exhaust flap
- 21 Control of injection pump Liebherr Diesel engine/superstructure



Comfortable driver's cabin of outstanding functionality.

- Modern and comfortable driver's cab of high functionality and convincing design
- Heat and sound absorbing internal panelling
- Ergonomically arranged operating and display elements for safe and convenient handling at permanent operation
- Digital display and keyboard units interconnected with the functional blocks by data bus technique
- Air-cushioned driver's and co-driver's seats, headrests, driver's seat with pneumatic lumbar support
- Height and inclination adjustable steering wheel
- Heated and electrically adjustable rear mirrors
- Side panes with electrical lifters
- Engine independent auxiliary warm water heater "Thermo 90"
- Safety belts for driver and co-driver
- Green-tinted windows for heat absorption
- Automatic windscreen washers/wipers with intermittent control
- Delayed disconnection of interior lighting
- Various racks and boxes for crane documentation, etc.
- Optional equipment
Air conditioning, seat heating, 3rd seat with headrest, sleeper berth, cassette radio

