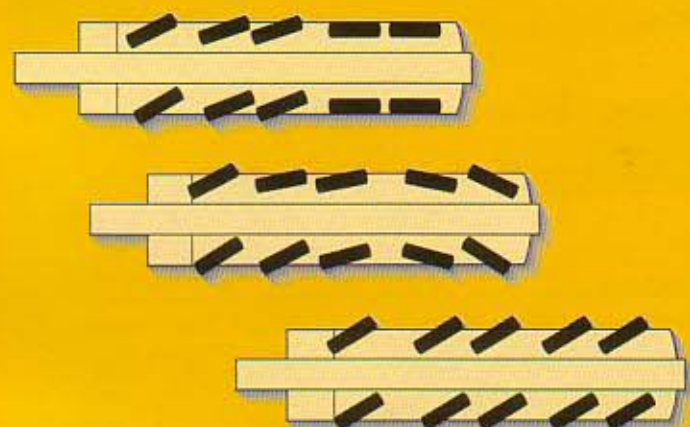


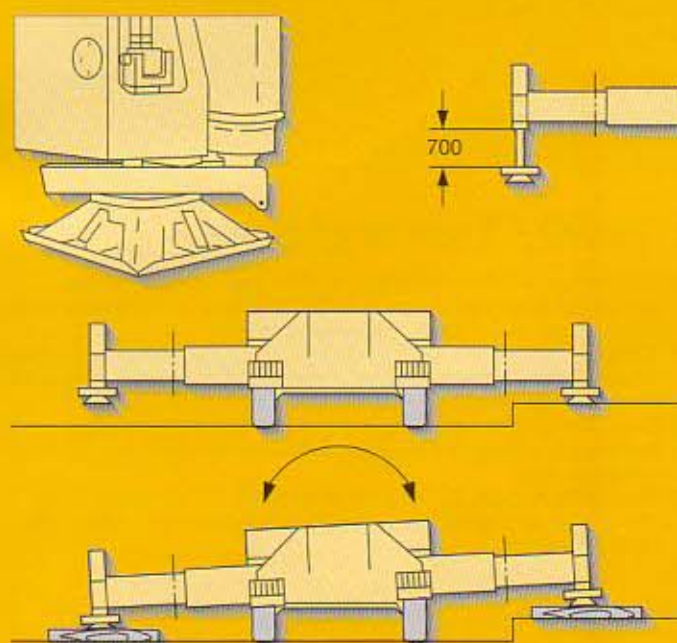
## Compact, manoeuvrable and weight-optimized.

- Overall length 14.95 m, length of carrier just 12.67 m
- Large overhang angles of up to 23° at vehicle front and rear
- Smallest turning radius of 10.2 m over vehicle with all-wheel steering
- 60 t total weight, incl. 7 t counterweight, drive 10 x 8, TELMA type eddy current brake (optional) tyre size 16, 50 t hook block (axle load 5 x 12 t)
- 2 optional tyre sizes
  - 14.00 R 25 - vehicle width 3 m
  - 16.00 R 25 - vehicle width 3 m



## Variable drive and steering concept

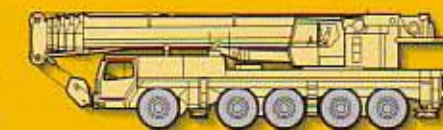
- Drive 10 x 6, axles 1, 4 and 5 driven, at road travel 4th and 5th axle driven, 1st axle activatable for off-road operation
- Drive 10 x 8 (optional), axles 1, 2, 4 and 5 driven, axles 4 and 5 driven at road travel, 1st and 2nd axle activatable for off-road operation
- Standard all-wheel steering, 4th and 5th axle steerable independent of axles 1, 2 and 3 (crab steering). The additional hydraulic steering is locked mechanically for road travel
- ZF-semi-integral power steering with 3 hydraulic pumps (dual circuit system)



## Setting crane on outriggers - quick, convenient and safe

- Variable supporting basis
  - Outriggers retracted
  - Supporting basis 5 m x 8.16 m
  - Supporting basis 7.5 m x 8.16 m
- Fix-mounted supporting pads, protected by splash guards, weight 40 kg
- Travel of supporting rams 700 mm
- 2 x 9° lateral inclination of chassis and crane superstructure
- Electronic inclination display
- Supporting pressure control within the cab and at the carrier (optional)
- Illuminated and dirt-protected reflecting levels
- Operation of outrigger system in accordance with the rules for the prevention of accidents

## Product advantages Mobile crane LTM 1150/1



**Max. lifting capacity: 150 t at 3 m radius**  
**Max. height under hook: 91 m with swing-away jib and extended telescopic boom**  
**Max. radius: 74 m with swing-away jib**



## Performance profile of the LTM 1150/1 at a glance.

- Outstanding range of lifting capacities, counterweight variants 5 t, 7 t, 15 t, 25 t, 35 t and 50 t
- Powerful, emission-optimized Liebherr turbo-charged Diesel engine of 400 kW/544 h.p. (Euro III)
- 5-axle carrier, compact and manoeuvrable due to all-wheel steering, smallest turning radius 10.2 m over vehicle
- 6-section, 12.6 m - 56 m long telescopic boom with prismatical, particularly buckling resistant boom profile
- 3-section, 12.5 - 28 m long biparted swing-away jib, mountable at 0°, 20° and 40°, hydraulic rigging aid
- Telescopic boom extension with 7 m long lattice section, max. height under hook with biparted swing-away jib 91 m
- Rapid-cycle telescoping system "Telematik" with patented internal interlocking system, fully automatic or manual telescoping is practicable
- LICCON, the most modern crane computer system worldwide, with comprehensive informative, monitoring and control functions
- Diesel engines, slewing gear, winches and hydraulic pump are self-manufactured, quality checked components
- The LTM 1150/1 is manufactured by Liebherr within the scope of a quality assurance system according to DIN ISO 9001

**The new LTM 1150/1 - more benefits**

# LIEBHERR

The better crane.



## Torsional rigid telescopic boom

- Prismatic boom cross-section of particular inherent stability
- Maintenance-free polyamide slide pads of telescopes
- First-rate lifting capacities, e.g.
  - 42.0 t at 10 m radius
  - 18.2 t at 20 m radius
  - 9.9 t at 30 m radius
  - 6.0 t at 40 m radius
  - 3.4 t at 50 m radius
  - 2.3 t at 60 m radius
  - 0.9 t at 74 m radius
- Telescoping by rapid cycle approx. 350 s for a boom length of 12.6 to 56 m

## Modern and powerful carrier drive

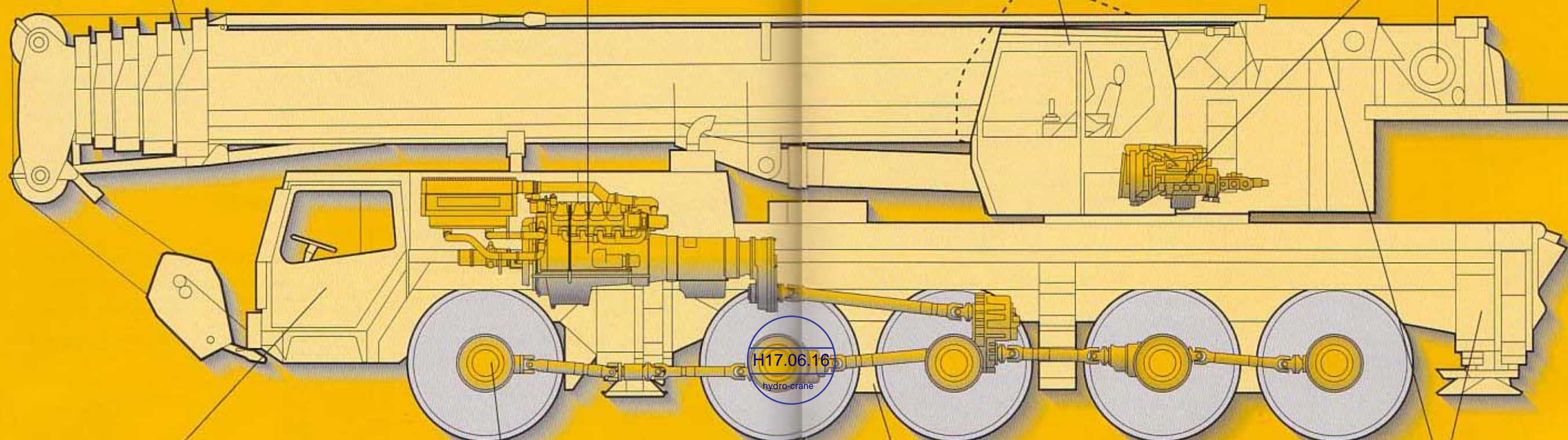
- Carrier engine: 8-cylinder Liebherr turbo-charged Diesel engine type D 9408 TI of 400 kW/544 h.p. (Euro III), max. torque 2500 Nm at 1100 - 1400 min<sup>-1</sup>, robust and reliable
- Exhaust gas system entirely of stainless steel
- Allison automatic transmission with torque converter and electronic control, proved and well tested serial transmission, 5 forward and 1 reverse speed, rough-terrain ratio
- Abrasionproof TELMA-type eddy current brake (optional)
- Max. driving speed 76 km/h, max. gradability 50 %

## Spacious crane cab with convenient armrest-integrated control levers

- Galvanized crane cab with sound absorbing and insulating internal sheeting, tinted panes all-round, front knockout window with large parallel windscreen wiper, large skylight of bullet-proof glass with large parallel windscreen wiper, roller blinds on front window and skylight, space saving sliding door
- Cab tiltable backwards by 20°
- Crane operator's seat with pneumatic lumbar support
- Operator-friendly armrest-integrated controls, vertically and horizontally adjustable as well as inclinable master switch consoles and armrests, ergonomically inclined operating consoles
- LICCON computer with test system

## Crane drive with field-proven components

- Crane engine: 4-cylinder Liebherr turbo-charged Diesel engine type D 924 TE of 120 kW/163 h.p., acc. to EPA/CARB and directive 97/68 EG, Bracket 1, max. torque 720 Nm at 1200 min<sup>-1</sup>, robust and reliable, located adjacent to crane cab, thus less noise pollution; exhaust gas system of stainless steel
- Slewing rim, slewing gear, the winches and the double axial piston variable displacement pump are self-manufactured Liebherr components and specifically matched for the application on mobile cranes
- Standard centralized lubricating system for slewing rim, boom bearing application and bearings of winches and luffing rams



## Highly comfortable driving cab

- Galvanized driving cab over width of vehicle with internal sound absorbing and thermal panelling, comfortably equipped
- Air-cushioned driver's seat with pneumatic lumbar support
- Steering wheel adjustable in height and inclination
- Heatable exterior mirrors
- Electric window lifters
- Standardized and ergonomically located operating and control elements

## Outstanding carrier technology for on-road/off-road travel.

- Weight-optimized axles, almost maintenance-free, made of high-grade steel, perfect track keeping and lateral stability due to special control linkage arrangement
- The maintenance-free steering knuckles are mounted on steel bearings, thus bearing failures are practically ruled out
- The perfected and robust axles are manufactured in large series and are troublefree
- The cardan shafts are maintenance-free; easy and quick fitting of the cardan shafts due to 70° diagonal toothing and 4 fixing screws

## "Niveaumatik" suspension - preserving crane and roads

- Maintenance-free suspension rams, free from lateral forces, protected by synthetic tubes
- Level adjustment (suspension on "travelling mode") can be activated automatically by push-button control from any position
- Stable cornering ability due to cross mounting of the hydropneumatic suspension
- Axle locking system (locking of the suspension for travelling with equipment) controllable from the driving cab
- Travel of suspension system +/- 150 mm

## Weight-optimized steel structure

- Steel structure of carrier, crane superstructure and telescopic boom in light-gauge design, calculated by the FEM method, weight-optimized and of outstanding torsional rigidity
- Tensile property of material with high safety factors through the application of STE 960 (960 N/mm<sup>2</sup>) resp. S 1100 QL (1100 N/mm<sup>2</sup>) for all supporting members
- Computer-aided welding machines ensure the accomplishment of high-quality weld joints
- The quality of the weld seams is documented by ultrasonic testing
- Trim and covering panels of aluminium

t through advanced technology.