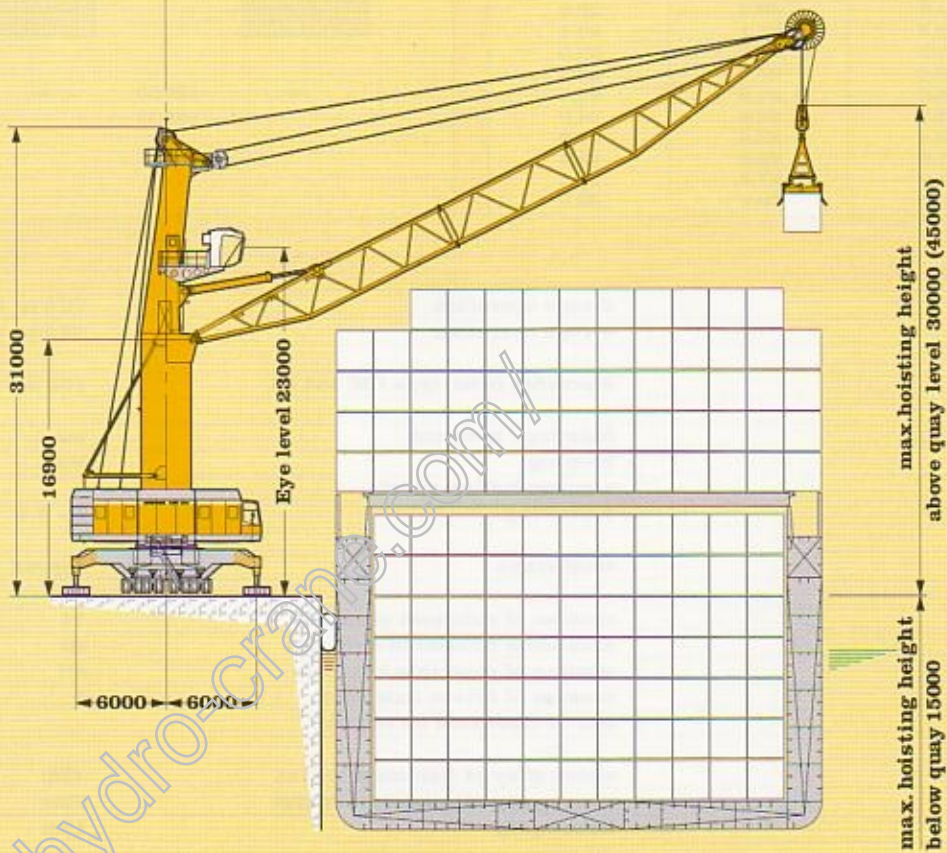
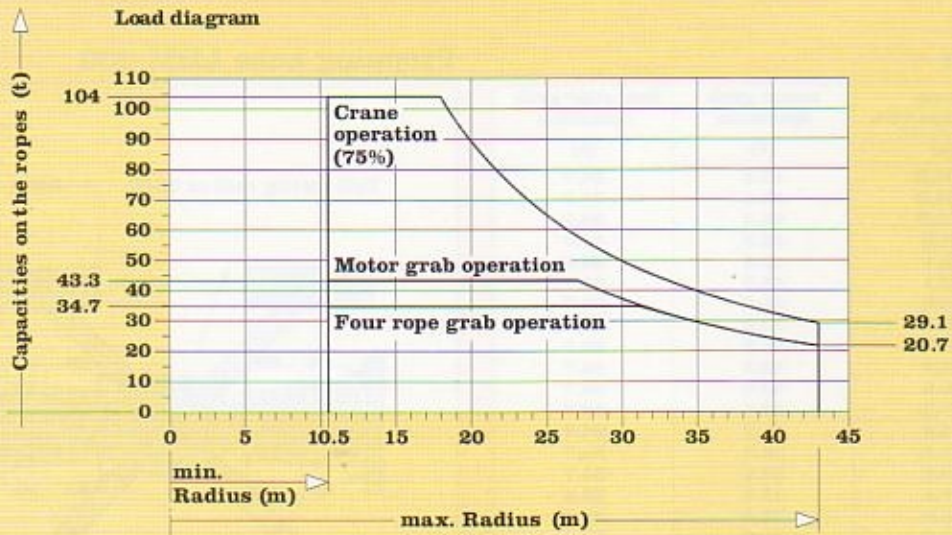


Liebherr Harbour Mobile Crane

LHM 320

Litronic®

The synergy of wide experience, research and development for your success and benefit



LIEBHERR

<http://www.hydro-crane.com/>

The name for cranes.

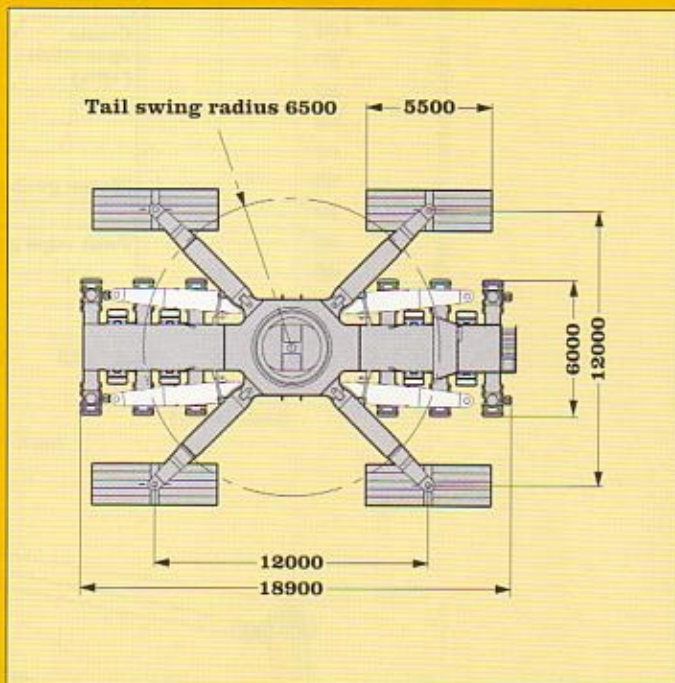
Liebherr Harbour Mobile Cranes, Type LHM 320 Litronic

- high performance
- high reliability and quality
- low operational cost
- unsurpassed mobility and flexibility
- worldwide service network

Load diagram

Radius (m)	crane operation 75% (t)	motor grab operation (t)	four rope grab operation (t)
10.5	104.0	43.3	34.7
17	104.0	43.3	34.7
18	102.7	43.3	34.7
19	94.9	43.3	34.7
20	88.1	43.3	34.7
21	82.1	43.3	34.7
22	76.8	43.3	34.7
23	72.0	43.3	34.7
24	67.8	43.3	34.7
25	64.0	43.3	34.7
26	60.5	43.0	34.7
27	57.3	40.7	34.7
28	54.4	38.7	34.7
29	51.8	36.8	34.7
30	49.3	35.1	34.7
31	47.1	33.5	33.5
32	45.0	32.0	32.0
33	43.0	30.6	30.6
34	41.2	29.3	29.3
35	39.5	28.1	28.1
36	37.9	27.0	27.0
37	36.4	25.9	25.9
38	35.0	24.9	24.9
39	33.7	24.0	24.0
40	32.4	23.0	23.0
41	31.3	22.3	22.3
42	30.1	21.4	21.4
43	29.1	20.7	20.7

Propping base LHM 320



Technical data

Capacities	2-rope operation	70 t or 104 t
	4-rope operation	64 t or 104 t
Engine	Mercedes Benz, type OM 444 LA	605 kW at 1900 rpm
Working speeds	hoisting / lowering	max. 90 m/min
	slewing	max. 1.6 rpm
	average luffing speed	36 m/min
	travelling	0 - 5.4 km/h
Weight	total crane	approx. 340 t
Undercarriage	number of axle sets standard	14
	maximum number of axle sets	20
	number of steerable axle sets	all
	number of driven axle sets	5
	can be increased on request	
Hoisting height	above quay at minimum radius	45m
	above quay at maximum radius	30m
	below quay	15m
Propping base	support base	12m x 12m

LIEBHERR-WERK NENZING GMBH,

P.O. Box 10, A-6710 Nenzing / Austria / Europe
 Telephone (+43) 5525-606-363,
 Telefax (+43) 5525-606-53
 Email: info@lwn.liebherr.com

Presented by: