

KUBOTA MOBILE CRANE

MODEL KM-36

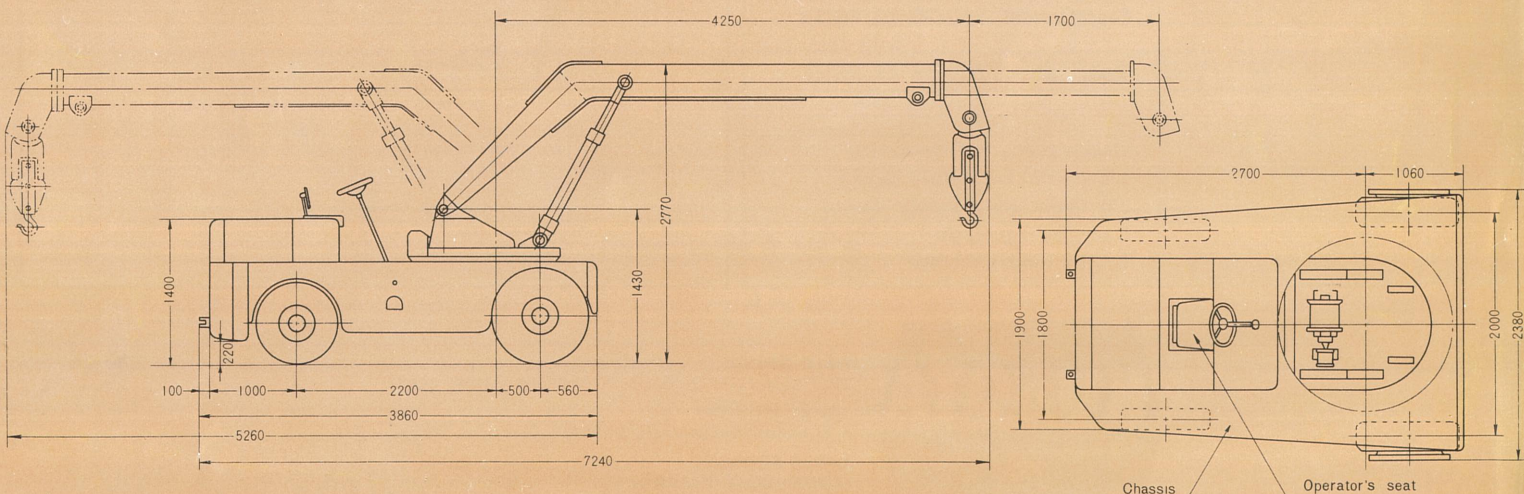
SELF-PROPELLED, FULL SLEWING, DIESEL ENGINE DRIVE, FULLY MOBILE CRANE

FEATURES

- Greater mobility, Low initial cost
- Low operating costs
- Most suitable for material handling in narrow and small places such as warehouses and workshops
- All motions are effected by means of hydraulic drive
 - *Quiet and smooth
 - *Effected by finger control
 - *Hoisting, Slewing, Derricking and expansion can be freely adjusted by regulating the oil pressure by the handle
- All motions (Travelling, Slewing, Derricking, Hoisting) totally independent, can be operated singly or in any combination.
- Perfect hydraulic control & central control system
- Full visibility for operator
- Perfect safety devices
- Easy maintenance



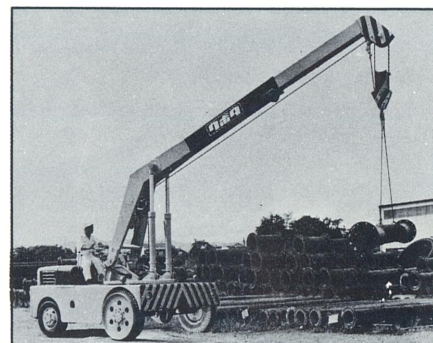
DIMENSIONS (mm)



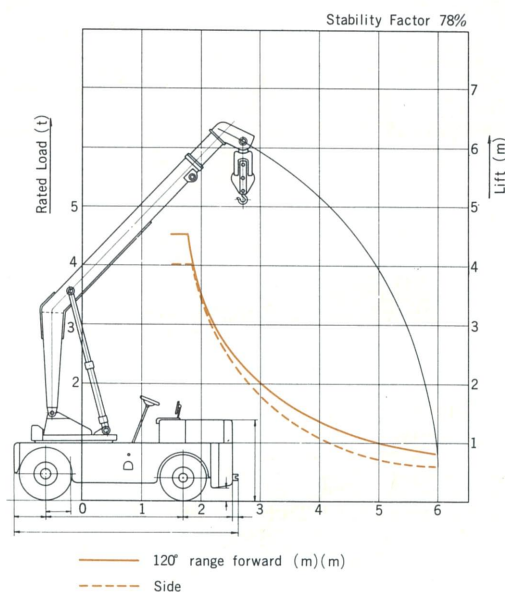
SPECIFICATIONS

Max. Capacity	4.5 tons×1.8m with jib in 120° range forward 4.0 tons×1.9m with jib at side
Power Unit	"Mitsubishi" Diesel Engine Water-cooled, 4 cycles, vertical type 29PS/2,200 r.p.m. (continuous rating)
Hoist Motion	The main drum has a planetary gear structure within, and is driven by the hydraulic oil motor which is specially protected against shocks arising from jerky operation.
Derricking Motion	The raising and lowering of the jib is operated by two single acting hydraulic cylinders which are equipped to the turntable.
Jib Telescopic Motion	The extension and retraction of the jib is operated by the double acting hydraulic cylinder within the jib.
Slewing Motion	360° full slewing The turntable can be slewed by the hydraulic oil motor through planetary gear.
Travelling Motion	The drive is transmitted through the special type of transmission, the propelling shaft and the differential gear for travelling to the front wheels. The service brake is hydraulic pressure expansion type and parking brake is hand brake.
Steering System	Manual ball screw type.
Jib	All welded box-section structure of steel plate, telescopic by hydraulic pressure Length : 4.8m Stroke of auxiliary jib : 1.7m
Tires	Front wheel: 750-20-12 PR(I) with restrictor Rear wheel 700-16-12 PR(I)
Safety Device	Overwinding safety device Jib derricking safety device Jib telescoping safety device Overslewing alarm Safety load indicator

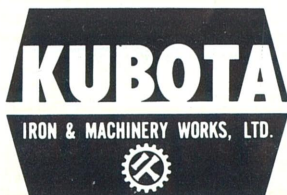
Performance	4.5 tons×1.8m with jib in 120° range forward 4.0 tons×1.9m with jib at side 0.8 tons×6.0m with jib in 120° range forward 0.6 tons×6.0m with jib at side
Hook speed	Hoisting (with 4 lines) 8m/min Loweling (with 4 lines) 10m/min
Slewing Speed	2.5 r.p.m.
Travelling speed	Max. 21.7Km/Hr 3 speeds forward 1 speed reverse minimum turning radius approx 4.6m maximum gradability(sinθ) 0.21(12°)
Weight	approx 6,500kg



PERFORMANCE CURVE



Kubota,
the Basic
Necessities Giant



HEAD OFFICE
22, Furude-cho 2-chome, Naniwa-ku, Osaka, Japan
TOKYO OFFICE
6, Nishibashi-Edobashi 3-chome, Chuo-ku, Tokyo, Japan
CABLE ADDRESS
IRONKUBOTA OSAKA or TOKYO