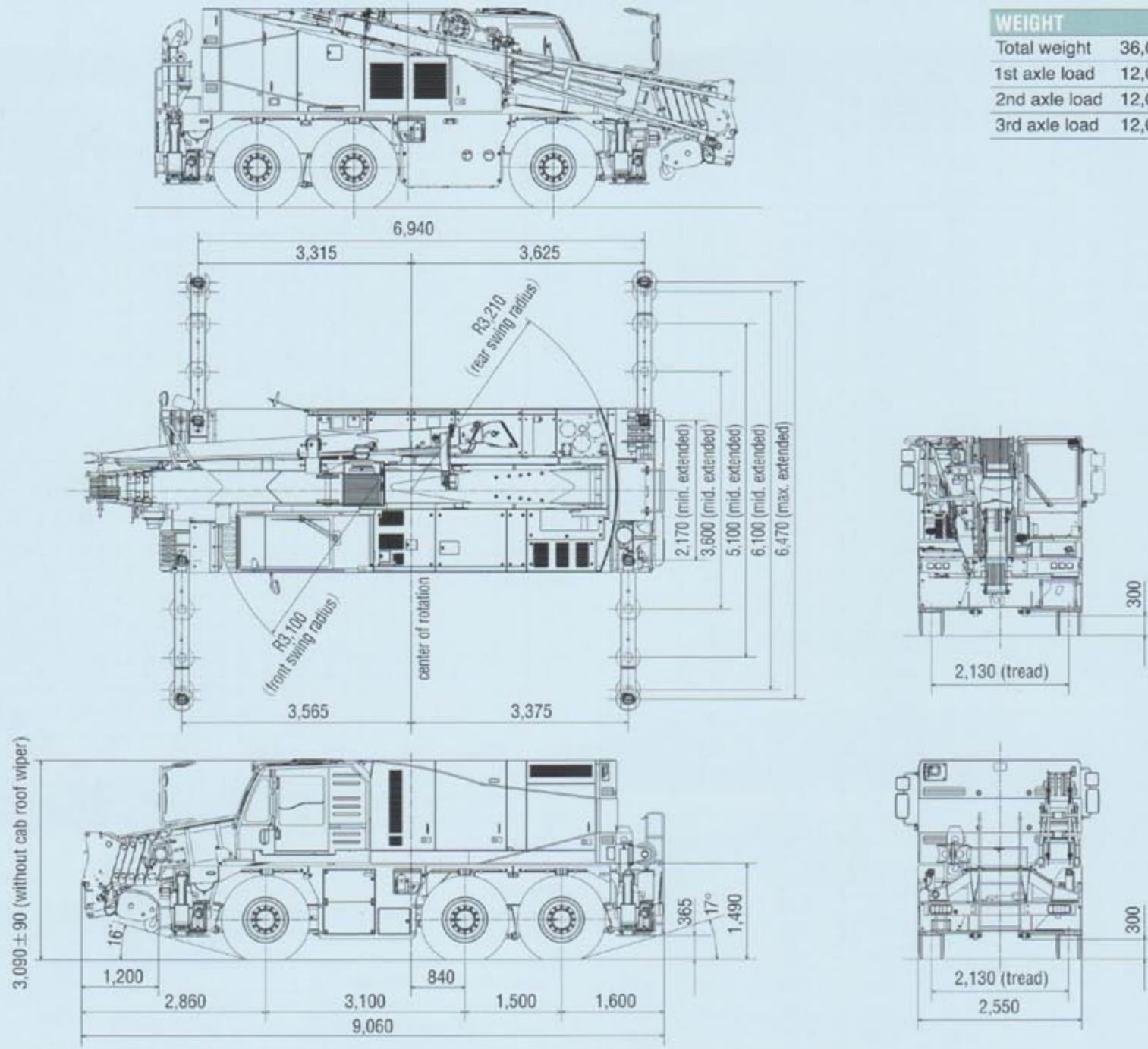


## General Dimensions (Unit: mm)



### WEIGHT

Total weight	36,000 kg
1st axle load	12,000 kg
2nd axle load	12,000 kg
3rd axle load	12,000 kg

RKE450-3.1 EUR

# CITY CRANE RKE450

Max. Lifting Capacity: 45.0\*\* metric ton at 2.5 m  
Max. Boom Length: 34.0 m



Note: Optional items shown above may change without notice.

## SPECIFICATIONS

CRANE PERFORMANCE		
Max. rated load	7.90 m boom (over front/over rear)	45,000 kg** x 2.5 m (10 parts) 40,000 kg* x 2.5 m (10 parts)
	7.90 m boom (all around)	35,000 kg x 3.0 m (10 parts)
	10.51 m boom	24,500 kg x 5.0 m (7 parts)
	13.12 m boom	22,500 kg x 5.0 m (7 parts)
	18.34 m boom	17,000 kg x 6.0 m (5 parts)
	23.56 m boom	15,000 kg x 6.0 m (4 parts)
	28.78 m boom	11,400 kg x 8.0 m (3 parts)
	31.39 m boom	9,450 kg x 8.0 m (3 parts)
	34.00 m boom	7,200 kg x 10.0 m (3 parts)
	Max. lifting height	6.3 m jib
10.2 m jib		3,000 kg x 12.0 m (1 part)
Max. working radius	Heavy duty jib	15,000 kg x 8.0 m (4 parts)
	25 t hook (Main boom)	34.15 m
Max. lifting height	4 t ball hook (Twist jib)	44.4 m
	Boom	31.1 m
Max. working radius	Jib	36.0 m
	Main boom length	7.90 m to 34.0 m
Boom telescoping speed	120 sec/26.1 m	
Jib length	6.3 m, 10.2 m (1.2 m: Heavy duty jib)	
Line speed	120 m/min at 4th layer, 98 m/min at 1st layer	
Line pull	4,500 kg at 5th layer	
Boom raising speed	55 sec/ - 9° to 80°	
Swing speed	2.1 min <sup>-1</sup> (2.1 rpm)	

CRANE MAIN STRUCTURE		
Main boom	Box type, 6 sections, 2nd, 3rd and 4th singly, and 5th and 6th simultaneous telescoping Hydraulic telescoping, use in combination with wire rope	
Jib	Side storage, compressed truss and box type, 2nd drawing out type. Manual jib, 3 step variable tilt type (5°, 25°, 45°) Hydraulic motor drive, planetary gear reduction and automatic brake (without free-fall). High to low variable speed	
Winch system	Direct forced type by double acting hydraulic cylinder (-8° ~ 82°)	
Boom hoist system	Hydraulic motor drive, planetary gear reduction type with pedal brake and parking brake.	
Swing system	All hydraulic H-type Extension width: 6.47/6.10/5.10/3.60/2.17 m	
Outriggers	All hydraulic H-type Extension width: 6.47/6.10/5.10/3.60/2.17 m	

WIRE ROPE		
Main	φ 16 mm x 160 m, P-S (19) + 39 x P-7	
HYDRAULIC SYSTEM		
Hydraulic pumps	for travel	2 variable displacement plunger pumps for travel, and 2 gear pumps for steering and 1 gear pump for emergency steering
	for crane	2 variable displacement plunger pumps and 3 gear pumps
Hydraulic oil tank	558 liters	
CARRIER PERFORMANCE		
Max. travel speed	80 km/h	
Gradeability	High gear: 19% (11°) / Low gear: 50% (27°)	
Min. turning radius	Over outside front bumper	8.02 / 6.51 m (normal/cramp steering)
	Over boom head	8.33 / 6.87 m (normal/cramp steering)
Engine	Make/model	HINO E13C
	Type	Water cooled, 4 cycle, 6 cylinders, direct injection diesel with turbocharger, intercooler (Anti-pollution conforming to Euromot III)
	Displacement	12.913 liters
	Max. output	330 kW/1,800 min <sup>-1</sup> (449 PS/1,800 rpm)
Max. torque	1,930 Nm/1,300 min <sup>-1</sup> (197 kgf m/1,300 rpm)	
CARRIER MAIN STRUCTURE		
Travel drive	All wheel drive and steering (6 x 6)	
Transmission	Type	HST (Hydrostatic transmission), full-time 6 wheel drive
	No. of speed shift	CVT by HST + High/Low 2-step
Axles	All axles steered and driven by variable displacement hydraulic motors, differential locks for transverse lock. 2-step axle intermediate gear	
Suspension	Hydro-pneumatic suspension (with hydraulic cylinder)	
	Type	Integrated power steering with emergency steering device
Steering	Mode	On-road: 1st and 3rd axle (Steering lock: 2nd axle) Off-road: Clamp mode (all axles), Crab mode (all axles) Manual mode (2nd and 3rd axles)
	Brake	Main service brake: Internal expansion drum type with full air booster on all wheels Aux. brake: ABS, HST brake Parking brake: Spring locked type, acting on wheels of the 2nd and 3rd axles.
Tires (front and rear)	385/95 R25	
Fuel tank	400 liters	

## SAFETY DEVICE

Crane System	Travel System
Moment limiter (auto-stop)	Rear view camera
Overhoist prevention device (auto-stop)	Emergency steering pump
Swing automatic stop device	ABS
Working range limit device	Rear steering auto-lock
Swing brake	Suspension lock device
Swing lock device (front and rear)	Engine overrun warning device
Interceptive lever lock for on and off	Reverse sound alarm
Check & Safety Monitor	Seat belt
Sling wire lock	
Hoist drum camera	
Overload state record	
Emergency directly connected cable	
Over lowering prevention device (auto-stop)	
Deadman switch	

## STANDARD EQUIPMENT

Spotlights
Hoist drum camera, rear view camera
Reverse sound alarm
Hook block 25t (3-sheave)
Tacho-graph (analog)
Tools
Hydraulically retractable side-step for cabin
Centralized greasing system
Air conditioner
Hoist winch
Foot pedals (swing)
Outrigger control box (left and right side)

## OPTIONAL EQUIPMENT

Twist jib
Heavy duty jib
4.0t ball, 10.0 t, 25.0t, 40.0 t hook block
12.5t searcher hook
Outrigger spotlight
Engine pre-heater
Stainless steel muffler with spark arrester
Stowage box
Spare wheel: 385/95 R25
Spare rim: 385/95 R25
One-way call
Radio antenna (on request)
Fire extinguisher (on request)
Yellow rotating beacon (on request)
Boom bumper (on request)

Optional equipment may vary by countries.

Note: This catalog may contain photographs of machines with specifications, attachments and optional equipment not certified for operation in your country. Please consult KOBELCO for those items you may require. Due to our policy of continual product improvements all designs and specifications are subject to change without advance notice.  
Copyright by KOBELCO CRANES CO., LTD. No part of this catalog may be reproduced in any manner without notice.



## KOBELCO CRANES CO., LTD.

17-1, Higashigotanda 2-chome, Shinagawa-ku, Tokyo 141-8626 JAPAN  
Tel: +81-3-5789-2130 Fax: +81-3-5789-3372  
URL: <http://www.kobelco-cranes.com/>

Inquiries To:

KOBELCO is the corporate mark used by Kobe Steel on a variety of products and in the names of a number of Kobe Steel Group companies.

Bulletin No.RKE450-3.1-EU1

100301IF Printed in Japan





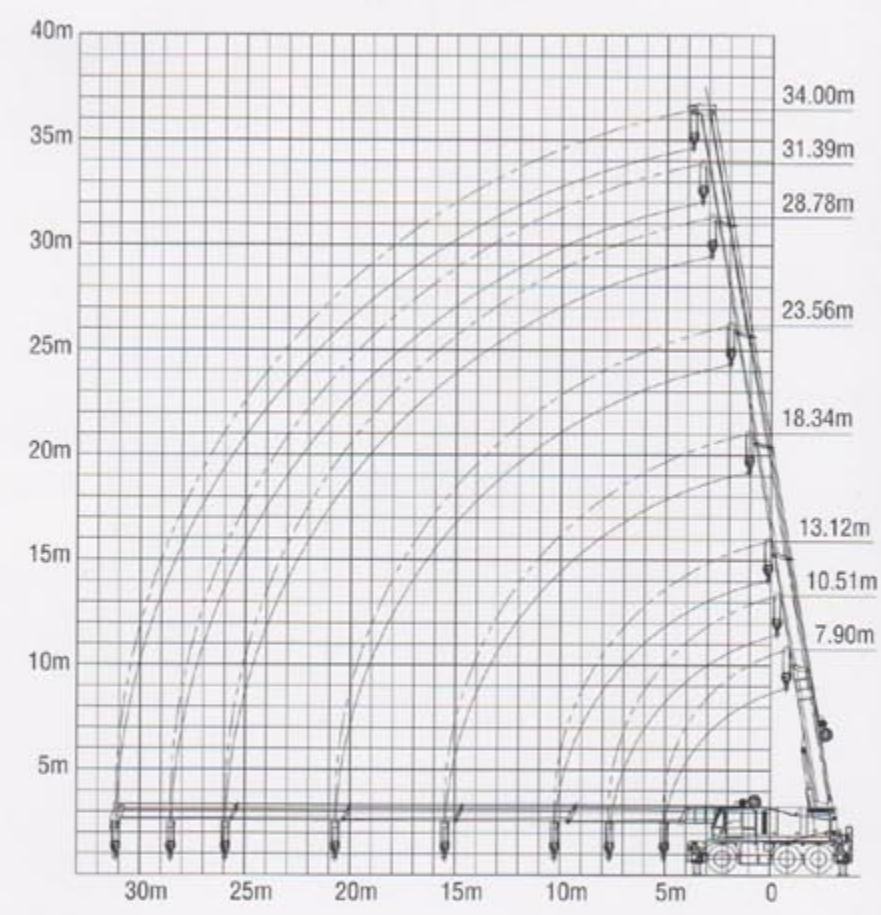
# LIFTING CAPACITIES

## MAIN BOOM

• Main boom length: 7.90 - 34.0 m • Outriggers: 6.47 m position • Swing area: 360°

		Unit: ton							
Boom length (m)		7.90	10.51	13.12	18.34	23.56	28.78	31.39	34.00
Operating radius (m)	2.5	45.00**							
		40.00*							
	3.0	35.00	24.50	22.50	17.00				
	3.5	33.00	24.50	22.50	17.00				
	4.0	31.00	24.50	22.50	17.00	15.00			
	4.5	28.50	24.50	22.50	17.00	15.00			
	5.0	25.00	24.50	22.50	17.00	15.00	11.40		
	6.0		21.30	19.10	17.00	15.00	11.40	9.45	7.20
	7.0		17.80	17.00	16.00	14.00	11.40	9.45	7.20
	8.0			15.50	14.70	13.15	11.40	9.45	7.20
	9.0			13.05	12.90	11.75	10.60	9.25	7.20
	10.0			10.65	10.50	10.80	9.90	8.70	7.20
	12.0				7.85	7.80	8.10	7.65	6.30
	14.0				5.85	6.10	6.35	6.20	5.40
	16.0					4.95	4.95	4.95	4.70
	18.0					3.90	4.30	4.15	4.20
	20.0					3.15	3.55	3.65	3.50
22.0						2.90	3.05	2.85	
24.0						2.40	2.55	2.35	
26.0							2.10	1.90	
28.0							1.75	1.55	
30.0								1.25	
Boom angle 0°		21.00	14.10	9.15	4.35	2.65	1.85	1.60	1.05

\*\*Over rear/over front/require special equipment  
\*Over rear/over front/require additional equipment

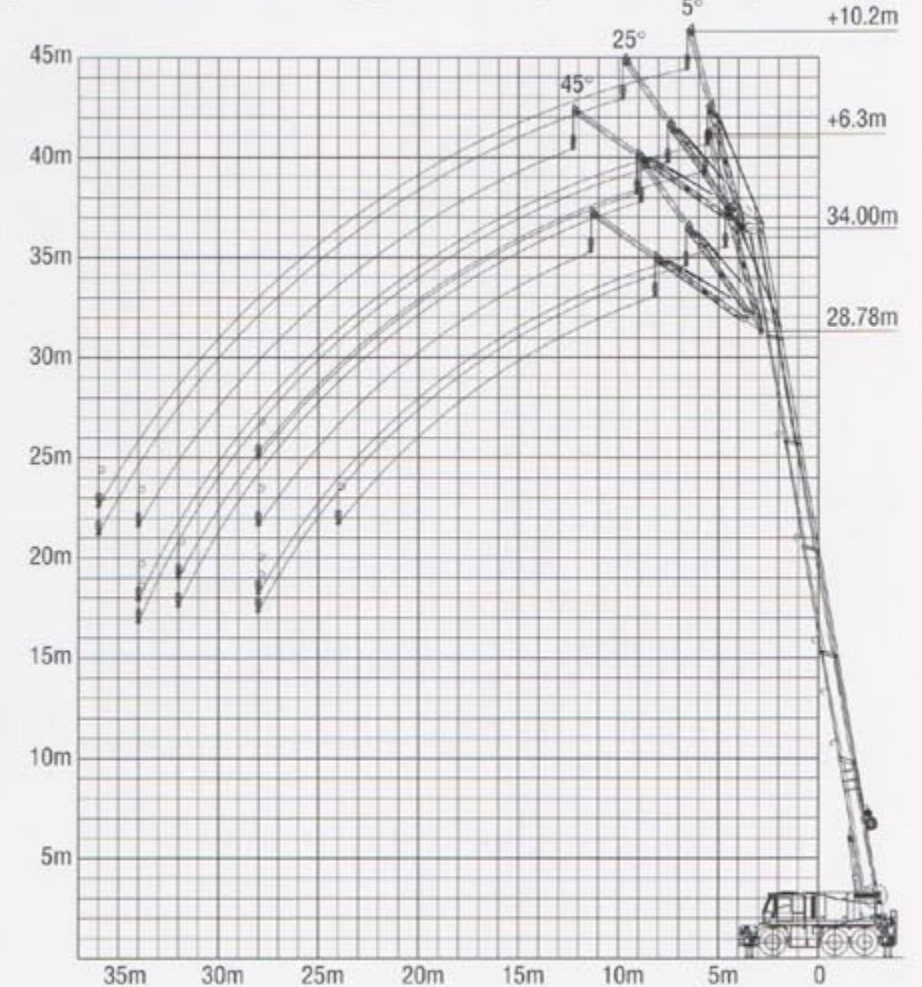


# LIFTING CAPACITIES

## TWIST JIB

• Boom length: 28.78 - 34.0 m • Jib length: 6.30 - 10.20 m • Outriggers: 6.47 m position • Swing area: 360°

		Unit: ton					
Boom length (m)		28.78			34.0		
Jib length (m)		6.30					
Jib angle (degree)		5	25	45	5	25	45
Operating radius (m)	8.0	4.00			4.00		
	9.0	4.00	3.90		4.00		
	10.0	4.00	3.90		4.00	3.90	
	11.0	4.00	3.80	1.60	4.00	3.90	1.60
	12.0	4.00	3.55	1.60	4.00	3.90	1.60
	13.0	3.70	3.30	1.60	4.00	3.70	1.60
	14.0	3.45	3.10	1.50	4.00	3.50	1.60
	15.0	3.25	2.90	1.40	3.75	3.30	1.60
	16.0	3.10	2.75	1.35	3.55	3.10	1.50
	17.0	2.95	2.65	1.30	3.35	2.95	1.40
	18.0	2.75	2.55	1.20	3.20	2.80	1.35
	19.0	2.65	2.40	1.15	3.05	2.70	1.30
	20.0	2.35	2.25	1.10	2.90	2.60	1.25
	22.0	1.90	1.95	1.00	2.65	2.40	1.15
	24.0	1.50	1.50	0.90	2.20	2.15	1.05
	26.0	1.15	1.15		1.80	1.85	1.00
	28.0	0.80	0.85		1.50	1.60	0.90
30.0				1.15	1.25		
32.0				0.90	0.90		
34.0				0.60	0.65		
No. of part line		1	1	1	1	1	1



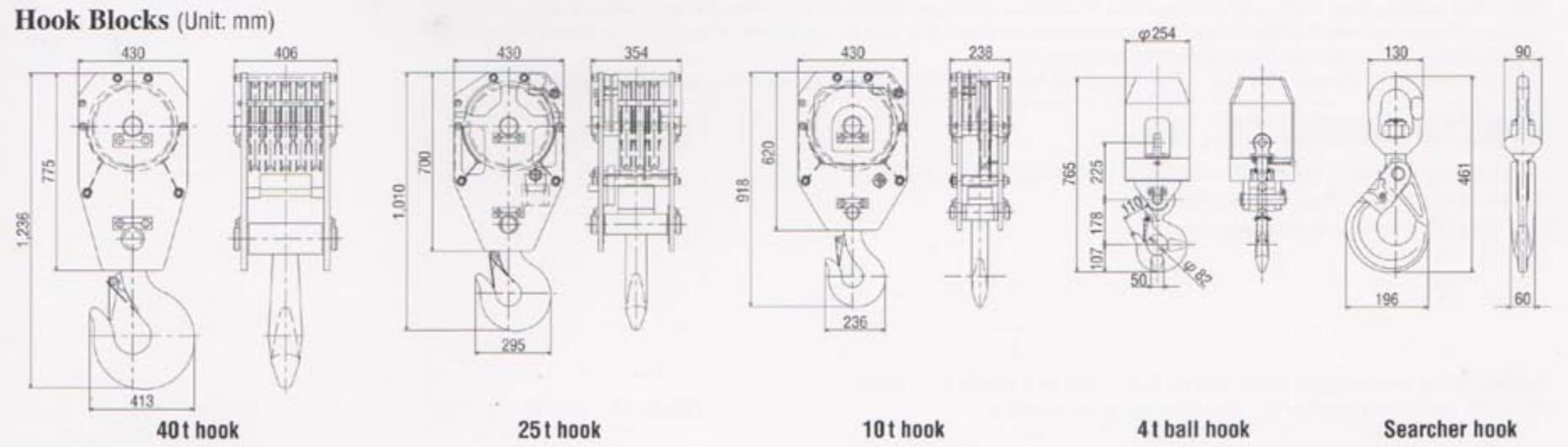
Boom and jib geometry shown does not reflect any deflection of boom and jib. Boom deflection and subsequent radius and boom angle change must be accounted for when at actual operation.

		Unit: ton					
Boom length (m)		28.78			34.0		
Jib length (m)		10.20					
Jib angle (degree)		5	25	45	5	25	45
Operating radius (m)	8.0	3.00					
	9.0	3.00			3.00		
	10.0	3.00			3.00		
	11.0	2.95	2.10		3.00		
	12.0	2.90	2.10		3.00		
	13.0	2.85	2.10		2.95	2.10	
	14.0	2.80	2.10	1.00	2.90	2.10	1.00
	15.0	2.75	2.10	1.00	2.85	2.10	1.00
	16.0	2.65	2.10	1.00	2.80	2.10	1.00
	17.0	2.55	2.05	0.90	2.75	2.10	1.00
	18.0	2.45	2.00	0.85	2.70	2.10	1.00
	19.0	2.35	1.95	0.80	2.60	2.05	0.90
	20.0	2.20	1.90	0.80	2.50	2.00	0.85
	22.0	2.00	1.75	0.75	2.30	1.90	0.80
	24.0	1.70	1.65	0.70	2.10	1.80	0.75
	26.0	1.35	1.50	0.60	1.90	1.70	0.70
	28.0	1.10	1.35	0.55	1.60	1.60	0.65
30.0	0.90	1.00		1.30	1.45	0.60	
32.0	0.70	0.70		1.10	1.30	0.55	
34.0				0.90	1.00	0.50	
36.0				0.70	0.70		
No. of part line		1	1	1	1	1	1

**Lifting capacity**

**Stationary: Max.**  
Operating radius 4.5 m

Swing area	360°		
Boom length m	7.90	10.51	13.12
Lifting capacity ton	8.00	7.50	7.50

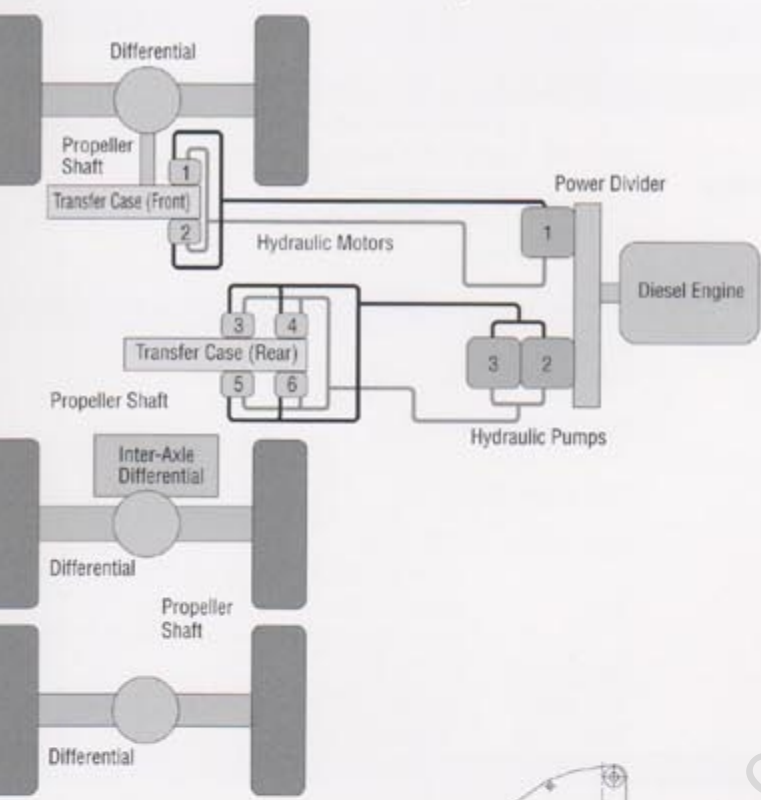


**Pick & carry (under 2 km/h): Max.**  
Operating radius: 3.0 m / Boom length: 7.90-13.12m

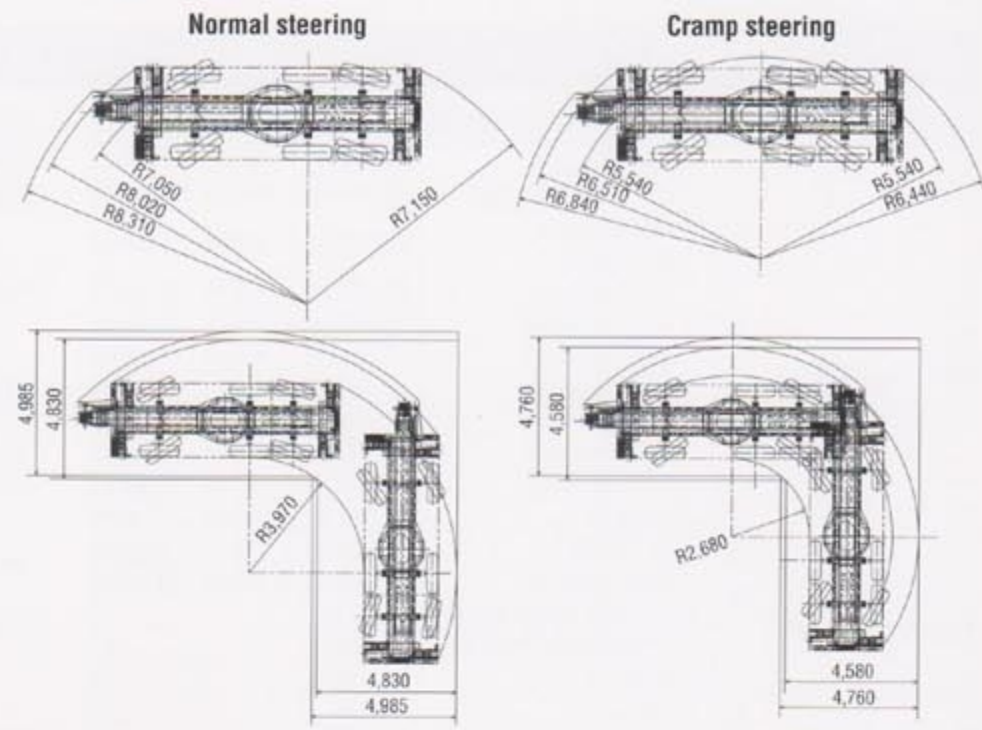
Swing area	Over front	Over rear
Lifting capacity ton	12.00	15.50

### Driveline

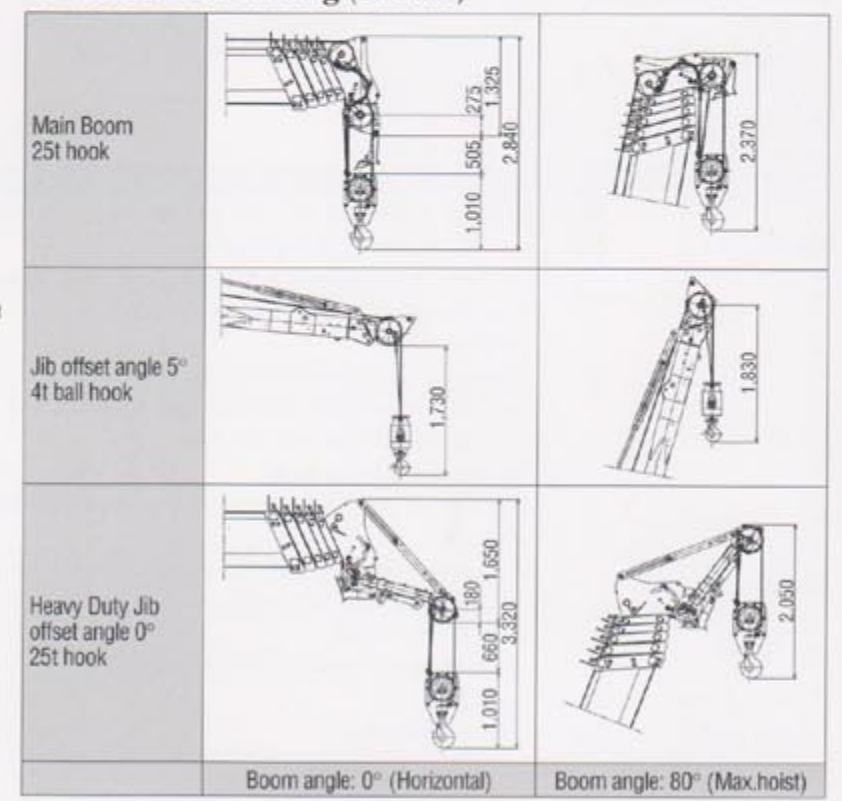
Hydrostatic transmission system delivers engine horsepower to the final drive without conventional mechanical-type transmission. And together with our integrated HST brake, offers you advanced mobility and less mechanical trouble.



### Steering (Unit: mm)

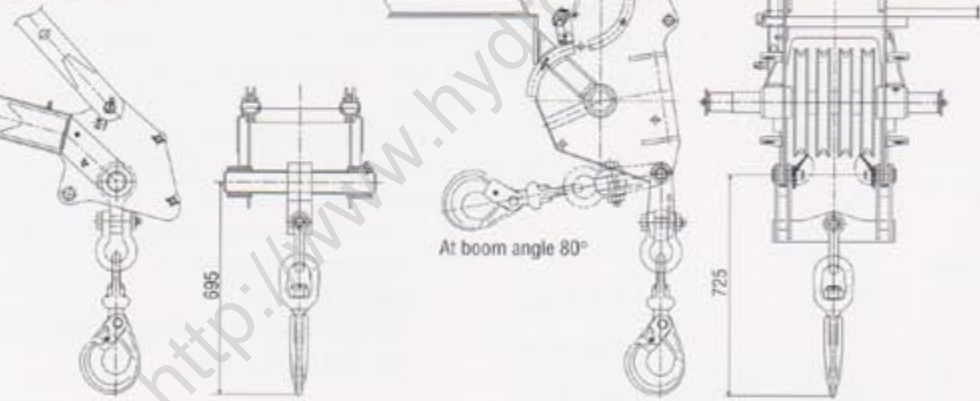


### Limit of Hook Lifting (Unit: mm)



### Searcher Hook (Unit: mm)

This 12.5 ton capacity direct hook on our 7.9 m compact boom allows you more access to the confined overhead spaces.



### Heavy Duty Jib

The adjustable heavy duty jib will gain further more access, suitable for indoor lifts.