

CX1100

HYDRAULIC CRAWLER CRANE

Max. Rated Load	: 110 t at 5.0 m working radius
Basic Boom Length	: 16 m
Max. Boom Length	: 73 m
Rated Engine HP	: 221 kW (300 PS) at 2 000 min ⁻¹ (2 000 rpm)
Operating Weight	: 114 t



HITACHI

Dependable, Operator-Friendly and That's the Basic Design Concept.

- 1 Ample power 221 kW (300 PS) engine, combined with Hitachi's original hydraulic system, gives smooth, productive operation.
- 2 Speedy operation and superior mobility for increased job efficiency
- 3 Fast hoisting and lowering speeds (110 m/min)
- 4 Rated line pull, a big 12.5 tons, and fast hoisting line speed provide increased job efficiency. (Main hook, auxiliary jib and crane jib)
- 5 Improved cab design for added operator comfort and convenience



Sidewalk (option) for servicing convenience



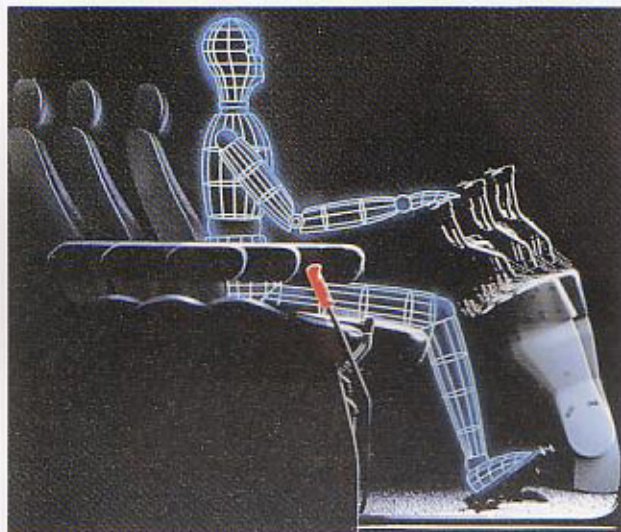
Comfortable.

● Independent Slow Speed Control

Independent slow speed control of hoisting (or travel) and boom hoisting is possible. Hoisting and boom hoisting can be separately set to suit job needs. Switching to slow speed control is shock-reduced for smooth operation.

● Constant-Speed Swing Control

With the set dial, swing speed can be kept constant within a certain range, despite engine speed. In high-lift crane operation, this feature is advantageous, allowing slow swing and quick hoisting. With the changeover switch, normal swing can be selected.



● Tilt-type main lever stand and adjustable deluxe seat.

The seat can slide to provide adequate operating position to suit job needs.



● The electronic fuel control accelerator —finger-touch grip atop the swing lever— has been added to the conventional fuel control lever and accelerator pedals.



● The newly-developed drum rotating sensor mechanism allows the operator to feel the starting of the drum with his hand.



● Hydraulic Booster Brake

The brake is fitted with hydraulic booster featuring good response for reduced operator fatigue.



Careful Designs Simple Mainten



Auto brake (green indicator)
Free fall (red indicator)

● Brake Mode

The brake mode switch, located on the lever stand, is easy to read and control. With the aid of indicators, the operator can read the brake mode at a glance. The interlock mechanism disables free fall even if the brake pedal is not applied completely.



● Pilot-Control Shutoff Lever

The pilot-control shutoff lever shuts out hydraulic pilot pressure to the pilot control valves. With the pilot-control shutoff lever in the LOCK position, the machine does not operate even if a lever is accidentally moved.



● Slow Boom Hoisting/Lowering Stop

- The slow stopping mechanism absorbs shocks at stop of boom hoisting when the boom overhoist prevention device functions.
- It also absorbs shocks at stop of boom lowering when the overload prevention device functions.

● Fail-Safe Braking System

The braking protection mechanism does not allow the engine to start unless the swing brake is locked and the hoisting brake is set to the auto mode.

● Double Boom Overhoist Prevention Devices

In addition to the hook overhoist prevention device and boom overhoist prevention device, the secondary boom overhoist prevention devices are provided. These devices actuate at boom angle of 82° to avoid overhoisting of both the boom and hook, and to stop the engine.



● Auto Stop Release Switch with Key

The auto stop release switch is keyed to prevent accidental release of safety devices.

● Brake Mode Selector Switch with Key

The hoist brake mode selector switch is keyed to prevent accidental switched to free fall during hoisting operation.



for Safety and ance.



● Hydraulic Jack-up (Option)

With the help of hydraulic jack-up device, the basic machine can be self-loaded quickly onto a trailer.

NOTE: The above picture is an example of cx1800.



● Side Frame Extend Cylinders (Option)



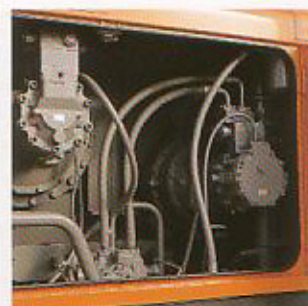
● Dual Taper Pins and Stopper



● Rolled Sunshade



● Intermittent Windshield Wiper and Washer



● Wide-Open Door for Easy Maintenance



● Side frame step allowing easy access to machine



● Remote Control Lubrication



● Spacious Tool Box