

OUTSTANDING
ENGINEERING
PRODUCED THE
DELTA DIFFERENCE.

**CHECK THESE
FEATURES
AGAINST ANY
CRAWLER CRANE
THIS SIZE...
OR ANY SIZE!**

■ Three full-width hoist drums. Each with double brakes, double

clutches. Rear drum splits to give you *four* hoist lines for special rigging needs.

■ Smoothest swing for non-sway loads. Closed-loop hydrostatic, piston pump, single or dual drive units.

■ A third hand! Modulated clutch controls let you do *three* functions at once, easily. Swing, hoist and boom, or propel—all at the same time.

■ Quiet cab: if you close the door you'll have to check the tach to see if the engine is running. Visibility that lets you see *everything*.

■ Hydrostatic boom hoist with a feathering touch. Puts the boom right where you want it... exactly.

■ Propel made for walking—keeps the load under the boom-point, unswaying, even at full counter-rotation

on the spot. Hydrostatic with two extra booster motors per side for more powerful torque when needed.

■ Wide-open machinery accessibility.

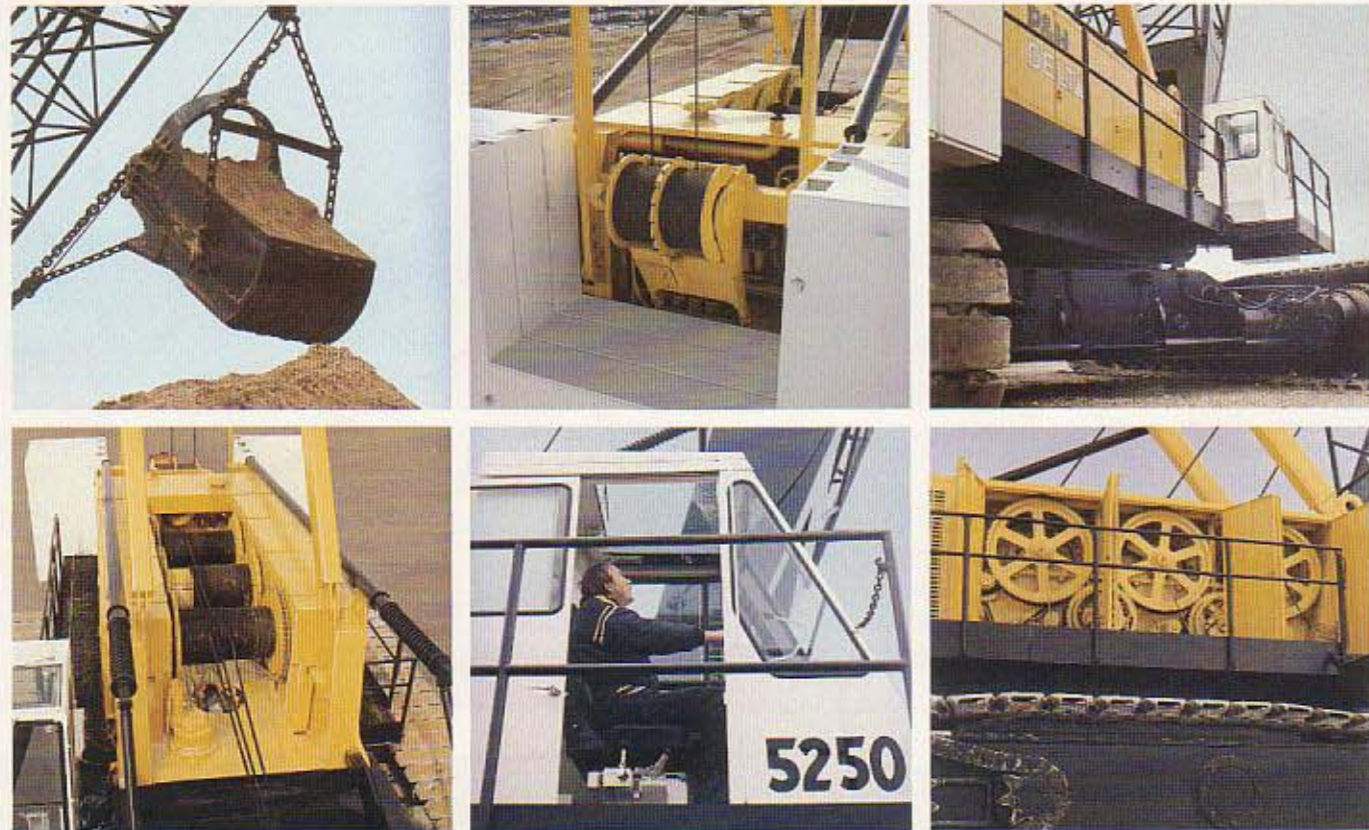
■ Fast knockdown—modular—move it by truck.

Harnischfeger



MILWAUKEE, WISCONSIN 53201

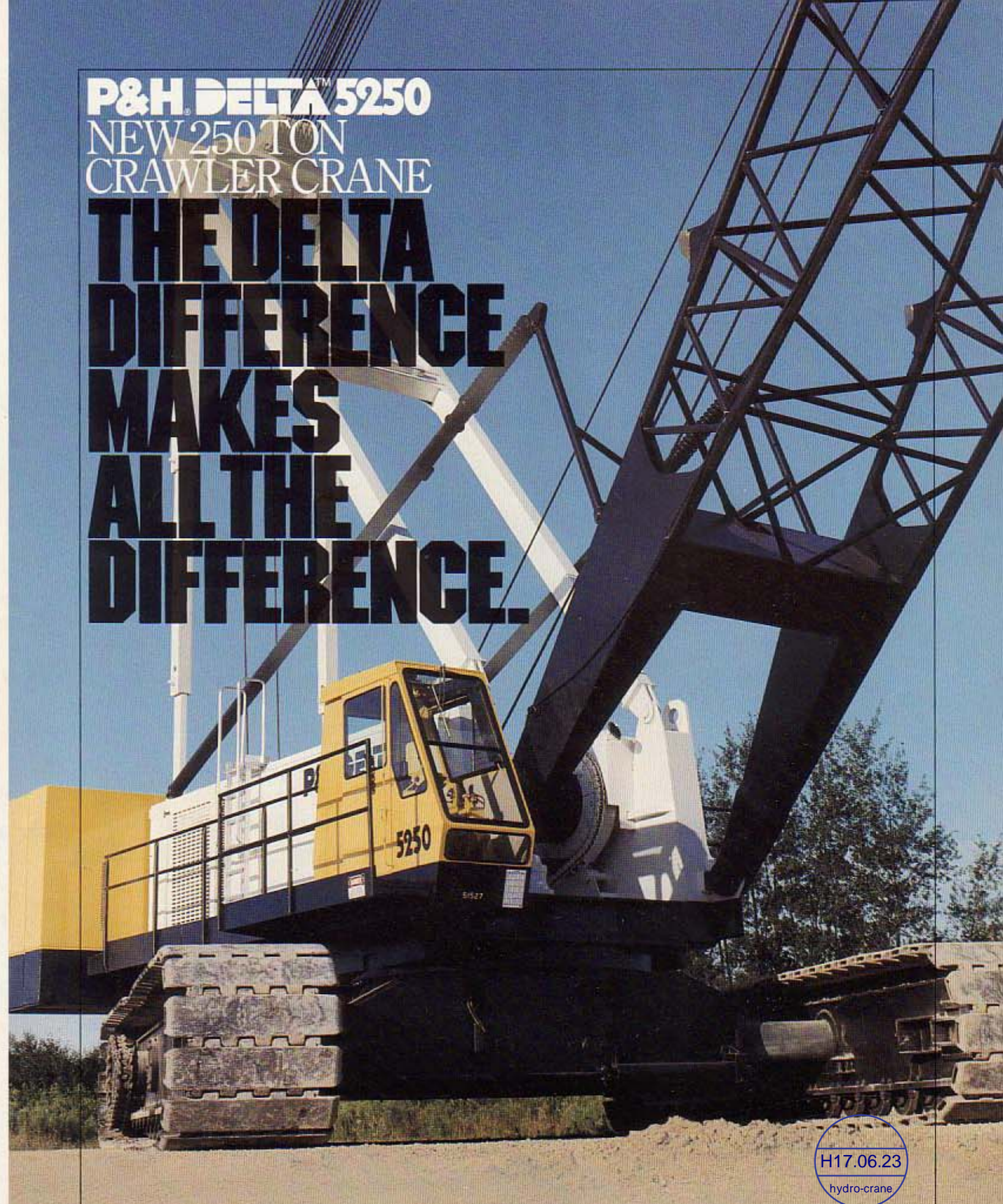
P&H has the technology.



Note: All designs, specifications and components of the equipment described above are subject to change at the manufacturer's sole discretion at any time without advance notice. Data published herein is informational in nature and shall not be construed to warrant suitability of the machine for any particular purpose as performance may vary with the conditions encountered. The only warranty applicable is our standard written warranty for this machine. Manufactured and sold in conformance with U.S. Department of Commerce Commercial Standard CS-90-58.

P&H DELTA 5250
NEW 250 TON
CRAWLER CRANE

**THE DELTA
DIFFERENCE
MAKES
ALL THE
DIFFERENCE.**

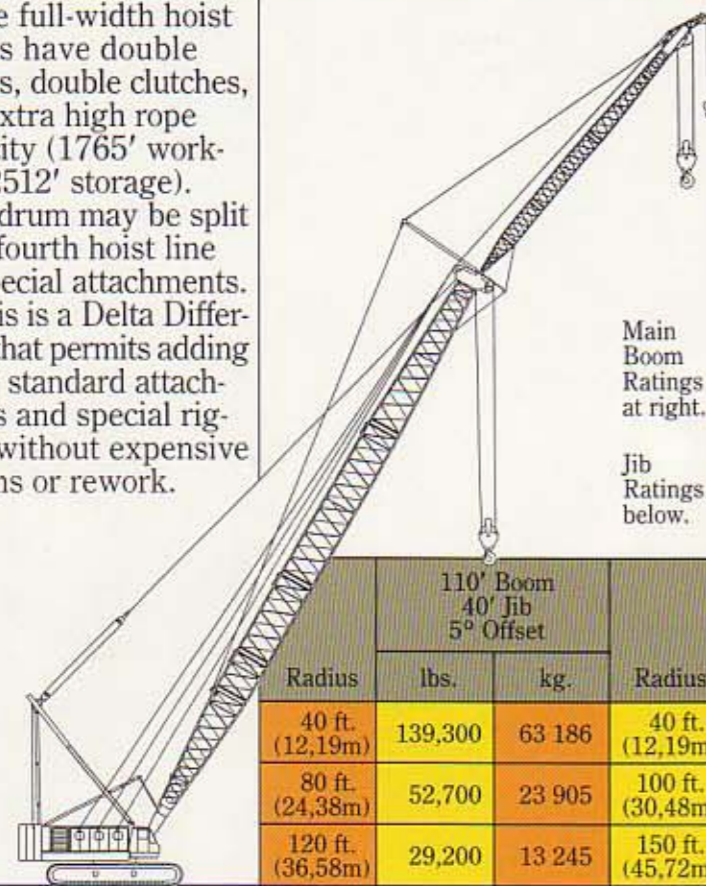


H17.06.23
hydro-crane

VERSATILITY: THE DELTA DIFFERENCE

Three full-width hoist drums have double brakes, double clutches, and extra high rope capacity (1765' working, 2512' storage). Rear drum may be split for a fourth hoist line for special attachments.

This is a Delta Difference that permits adding many standard attachments and special rigging without expensive options or rework.



Main Boom Ratings at right.

Jib Ratings below.

Boom Length	Radius		Capacities—360°	
	Feet	Meters	Pounds	Kilograms
80 ft. (24,38m)	19	5,79	500,000	226 799
	50	15,24	113,800	51 619
	70	21,34	72,300	32 795
150 ft. (45,72m)	30	9,14	237,200	107 593
	70	21,34	70,300	31 888
	110	33,53	37,100	16 828
220 ft. (67,06m)	40	12,19	151,100	68 539
	100	30,48	40,000	18 144
	200	60,96	10,900	4 944
290 ft. (88,39m)	50	15,24	96,900	43 954
	100	30,48	37,300	16 919
	200	60,96	7,900	3 583

110' Boom 40' Jib 5° Offset			150' Boom 40' Jib 5° Offset			200' Boom 140' Jib 5° Offset		
Radius	lbs.	kg.	Radius	lbs.	kg.	Radius	lbs.	kg.
40 ft. (12,19m)	139,300	63 186	40 ft. (12,19m)	134,200	60 873	80 ft. (24,38m)	15,900	7 212
80 ft. (24,38m)	52,700	23 905	100 ft. (30,48m)	36,500	16 556	140 ft. (42,67m)	14,900	6 759
120 ft. (36,58m)	29,200	13 245	150 ft. (45,72m)	18,500	8 392	220 ft. (67,06m)	6,800	3 084

LIFT CRANE PLUS. The Delta 5250 is a superb lift crane with high capacities at all radii,

a long, extra-rugged boom, and a super 80

ton (72.6 t) jib. The main boom reaches to 290 feet (88.38m). Longest boom and jib combination is 200 ft. + 140 ft. (60.96m +

42.67m). Widest boom foot spread—106 inches (2692mm).

A DELTA DIFFERENCE!



DELTA-LIFT: THE MULTIPLIER.

The Delta-lift attachment can enhance the load moments of the Delta 5250 from two to

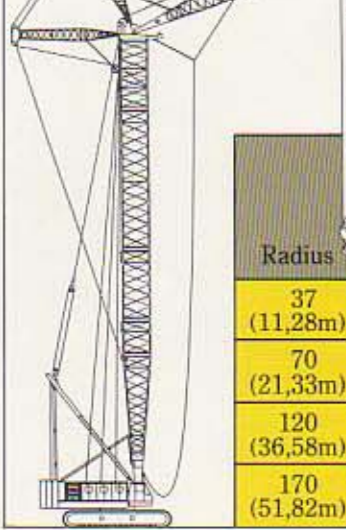
more than twelve times the standard lift crane. Boom lengths to 400 feet (122m) can be erected. The trailing counterweight is independently powered to

swing or assist forward travelling with capacity loads. Travelling is smooth, maneuvering easy without any jerking to affect the stability of the load on the hook.

Can be rigged with either a fixed or luffing jib for custom erection jobs.

A DELTA DIFFERENCE!

Radius	DELTA LIFT I		DELTA LIFT II		DELTA LIFT III		DELTA LIFT IV	
	lbs.	kg.	lbs.	kg.	lbs.	kg.	lbs.	kg.
36 ft. (10,97m)	536,000	243 128						
40 ft. (12,19m)	428,000	194 140	513,000	232 695				
50 ft. (15,24m)	324,000	146 965	395,000	179 171	637,000	288 941		
80 ft. (24,38m)	172,000	78 019	223,000	101 152	372,000	168 738	525,000	238 138
120 ft. (36,58m)	103,000	46 720	137,000	62 143	232,000	105 235	322,000	146 058
150 ft. (45,72m)	77,000	34 927	99,000	44 906	180,000	81 647	221,000	100 245

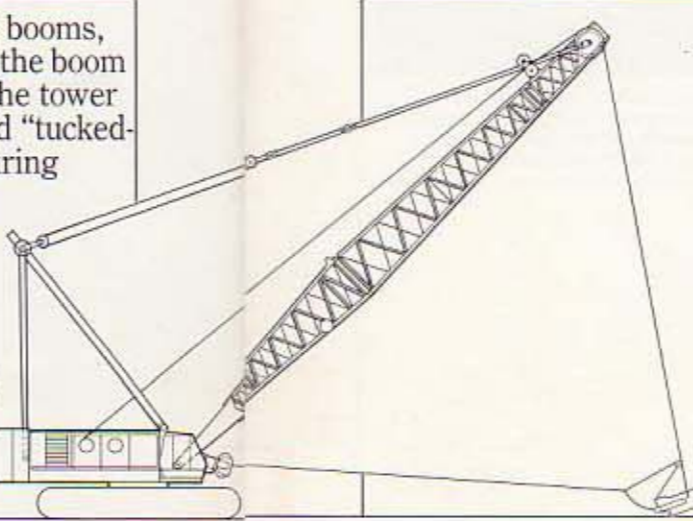


POWER TOWER
A patented tower cap mounts the boom on the

centerline of the tower, which eliminates the torsional stresses of

edge-mounted booms, and yet allows the boom to fold under the tower in the preferred "tucked-in" position during erection. Result: More capacity, more reach.

A DELTA DIFFERENCE!



DUTY CYCLE, TOO.

Extra heavy-duty undercarriage and upper frame, plus double brakes and clutches make the Delta 5250 a true universal crane, unique in its class. A second hydraulic swing unit doubles swing torque for continuous, heavy dragline or clamshell work.

A DELTA DIFFERENCE!

	Boom	Radius	Boom Angle (deg.)	Rated Load—360°	
				lbs.	kg.
Drag-line	90 ft. (27,43m)	75 ft. (22,86m)	41.8	30,000	13 608
	110 ft. (33,53m)	90 ft. (27,43m)	41.7	30,000	13 608
	140 ft. (42,67m)	110 ft. (33,53m)	43.2	25,800	11 703
Clam-shell	90 ft. (27,43m)	50 ft. (15,24m)	62.1	32,000	14 515
	130 ft. (39,62m)	90 ft. (27,43m)	50.8	32,000	14 515
	180 ft. (54,86m)	110 ft. (33,53m)	55.4	23,100	10 478